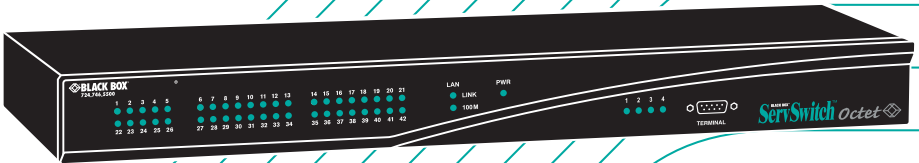


JULY 2006

# BLACK BOX<sup>®</sup> *ServSwitch*™ *Octet*



KV1700A/E  
KV1701A/E  
KV1702A/E  
KV1703A/E  
KV1711A/E  
KV1712A/E  
KV1713A/E



## Welcome to the ServSwitch™ Family!

Thank you for purchasing a BLACK BOX® Octet! We appreciate your business, and we think you'll appreciate the many ways that your new Octet will save you money, time, and effort.

That's because the ServSwitch family is all about breaking away from the traditional, expensive model of computer management. You know, the one-size-fits-all-even-if-it-doesn't model that says, "One computer gets one user station, no more, no less." Why not a single user station (monitor, keyboard, and mouse) for multiple computers—even computers of different platforms? Why not a pair of user stations, each of which can control multiple computers? Why not multiple user stations for the same computer?

With our ServSwitch products, there's no reason why not. We carry a broad line of robust solutions for all these applications. Do you have just two PCs, and need an economical alternative to keeping two monitors, keyboards, and mice on your desk? Or do you need to share dozens of computers, including a mix of IBM® PC, RS/6000®, Apple® Macintosh®, Sun Microsystems®, and SGI™ compatibles among multiple users with different access levels? Does your switch have to sit solidly on a work table and use regular everyday cables? Or does it have to be mounted in an equipment rack and use convenient many-to-one cables? No matter how large or small your setup is, no matter how simple or how complex, we're confident we have a ServSwitch system that's just right for you.

The ServSwitch™ family from BLACK BOX—the one-stop answer for all your KVM switching needs!

\*

This manual will tell you all about your new ServSwitch Octet, including how to install, operate, and troubleshoot it. For an introduction to the ServSwitch Octet, see Chapter 2. The ServSwitch Octet product codes covered in this manual are:

**KV1700 KV1701 KV1702 KV1703 KV1711 KV1712 KV1713**

This manual also includes information about the ServSwitch Octet software and the Server Access Modules (SAM), which have their own manuals or installation guides.

**KV1720 KV1721 KV1722 KV1724 KV1725  
KV1726 KV1727 PS123**

---

**NOTE:**

For ServSwitch Octet products in the United States, product codes will end with the letter A. For ServSwitch Octet products outside of the United States, product codes will end with the letter E.

---

**FEDERAL COMMUNICATIONS COMMISSION  
AND INDUSTRY CANADA****RADIO-FREQUENCY INTERFERENCE STATEMENTS**

This equipment generates, uses, and can radiate radio-frequency energy and if not installed and used properly, that is, in strict accordance with the manufacturer's instructions, may cause interference to radio communication. It has been tested and found to comply with the limits for a Class A computing device in accordance with the specifications in Subpart B of Part 15 of FCC rules, which are designed to provide reasonable protection against such interference when the equipment is operated in a commercial environment. Operation of this equipment in a residential area is likely to cause interference, in which case the user at his own expense will be required to take whatever measures may be necessary to correct the interference.

Changes or modifications not expressly approved by the party responsible for compliance could void the user's authority to operate the equipment.

This digital apparatus does not exceed the Class A limits for radio noise emission from digital apparatus set out in the Radio Interference Regulation of Industry Canada.

Le présent appareil numérique n'émet pas de bruits radioélectriques dépassant les limites applicables aux appareils numériques de la classe A prescrites dans le Règlement sur le brouillage radioélectrique publié par Industrie Canada.

**EUROPEAN UNION DECLARATION OF CONFORMITY**

This equipment has been tested and found to comply with the limits for a Class A computing device in accordance with the specifications in the European standard EN55022. These limits are designed to provide reasonable protection against harmful interference. This equipment generates, uses and can radiate radio-frequency energy, and if not installed and used in accordance with the instructions, might cause harmful interference to radio or television reception.

However, there is no guarantee that harmful interference will not occur in a particular installation. If this equipment does cause interference to radio or television reception, which can be determined by turning the equipment on and off, you can correct the interference with one or more of the following measures:

- a. Reorient or relocate the receiving antenna.
- b. Increase the separation between the equipment and the receiver.
- c. Connect the equipment to an outlet on a circuit different from that to which the receiver is connected.
- d. Consult the supplier or an experienced radio/TV technician for help.

Shielded cables must be used with this equipment to maintain compliance with radio frequency energy emission regulations and ensure a suitably high level of immunity to electromagnetic disturbances. This equipment has also been found to comply with European standards EN50082 and EN60950.

CE



### Japanese Compliance Statement

この装置は、情報処理装置等電波障害自主規制協議会（VCCI）の基準に基づくクラスA情報技術装置です。この装置を家庭環境で使用すると電波妨害を引き起こすことがあります。この場合には使用者が適切な対策を講ずるよう要求されることがあります。

### Other Agency Approvals

USA (UL, FCC)

Canada (cUL, ICES-003)

European Union (CE)

### TRADEMARKS USED IN THIS MANUAL

BLACK BOX® and the logo are registered trademarks, and ServSwitch, ServSelect, and ServSelect IP are trademarks of BLACK BOX Corporation.

Apple, Mac, and Macintosh are registered trademarks of Apple Computer, Inc.

IBM, PS/2, and RS/6000 are registered trademarks of International Business Machines Corporation.

Microsoft, HyperTerminal, Windows, Windows NT, and Windows XP are trademarks or registered trademarks of Microsoft Corporation in the United States and/or other countries.

Sun and Sun Microsystems are registered trademarks of Sun Microsystems, Inc. in the United States and other countries.

UL is a registered trademark of Underwriters Laboratories Inc.

Any other trademarks mentioned in this manual are acknowledged to be the property of the trademark owners.

**Normas Oficiales Mexicanas (NOM)  
Electrical Safety Statement****INSTRUCCIONES DE SEGURIDAD**

1. Todas las instrucciones de seguridad y operación deberán ser leídas antes de que el aparato eléctrico sea operado.
2. Las instrucciones de seguridad y operación deberán ser guardadas para referencia futura.
3. Todas las advertencias en el aparato eléctrico y en sus instrucciones de operación deben ser respetadas.
4. Todas las instrucciones de operación y uso deben ser seguidas.
5. El aparato eléctrico no deberá ser usado cerca del agua—por ejemplo, cerca de la tina de baño, lavabo, sótano mojado o cerca de una alberca, etc.
6. El aparato eléctrico debe ser usado únicamente con carritos o pedestales que sean recomendados por el fabricante.
7. El aparato eléctrico debe ser montado a la pared o al techo sólo como sea recomendado por el fabricante.
8. Servicio—El usuario no debe intentar dar servicio al equipo eléctrico más allá a lo descrito en las instrucciones de operación. Todo otro servicio deberá ser referido a personal de servicio calificado.
9. El aparato eléctrico debe ser situado de tal manera que su posición no interfiera su uso. La colocación del aparato eléctrico sobre una cama, sofá, alfombra o superficie similar puede bloquea la ventilación, no se debe colocar en libreros o gabinetes que impidan el flujo de aire por los orificios de ventilación.
10. El equipo eléctrico deber ser situado fuera del alcance de fuentes de calor como radiadores, registros de calor, estufas u otros aparatos (incluyendo amplificadores) que producen calor.
11. El aparato eléctrico deberá ser conectado a una fuente de poder sólo del tipo descrito en el instructivo de operación, o como se indique en el aparato.
12. Precaución debe ser tomada de tal manera que la tierra física y la polarización del equipo no sea eliminada.
13. Los cables de la fuente de poder deben ser guiados de tal manera que no sean pisados ni pellizcados por objetos colocados sobre o contra ellos, poniendo particular atención a los contactos y receptáculos donde salen del aparato.
14. El equipo eléctrico debe ser limpiado únicamente de acuerdo a las recomendaciones del fabricante.
15. En caso de existir, una antena externa deberá ser localizada lejos de las líneas de energía.
16. El cable de corriente deberá ser desconectado del cuando el equipo no sea usado por un largo periodo de tiempo.
17. Cuidado debe ser tomado de tal manera que objetos líquidos no sean derramados sobre la cubierta u orificios de ventilación.
18. Servicio por personal calificado deberá ser provisto cuando:
  - A: El cable de poder o el contacto ha sido dañado; u
  - B: Objetos han caído o líquido ha sido derramado dentro del aparato; o

- C: El aparato ha sido expuesto a la lluvia; o
- D: El aparato parece no operar normalmente o muestra un cambio en su desempeño; o
- E: El aparato ha sido tirado o su cubierta ha sido dañada.





## CONTENTS

|  |    |
|--|----|
| Specifications .....                                       | 9  |
| Product Overview .....                                     | 19 |
| Features and Benefits .....                                | 19 |
| Glossary .....   | 21 |
| Component Overview .....                                   | 21 |
| Safety Precautions .....                                   | 23 |
| Installation .....   | 25 |
| Octet Switching Systems .....                              | 25 |
| Getting Started .....                                      | 25 |
| Rack Mounting an Octet Switch .....                        | 28 |
| Installing an Octet Switch .....                           | 28 |
| Connecting Target Devices to the Octet Switch .....        | 30 |
| Connecting Users to the Octet Switching System .....       | 32 |
| Connecting a Local Server to the Octet Switching System .. | 33 |
| Connecting an SAMDM Module for Dual Port Output .....      | 34 |
| Installing a Cascaded Octet Switching System .....         | 35 |
| Installing Octoware Software .....                         | 38 |
| Configuring Octoware software .....                        | 39 |
| Octet Switching Systems in Broadcast Environments .....    | 40 |
| Flash Upgrading the Octet Switching System .....           | 42 |
| Unit LEDs .....  | 42 |
| Operations .....   | 45 |
| OSD Overview .....   | 45 |
| Target Devices .....                                       | 46 |
| Users .....  | 53 |
| Configuring Keyboard Settings .....                        | 58 |
| Using Audio and Serial Data Emulation .....                | 63 |
| Viewing Octet Server Access Module Version Information ..  | 64 |
| User Stations .....  | 65 |
| Setting Device Properties .....                            | 67 |
| OSD Command Line Operations .....                          | 70 |
| Forcing a Connection to a Target Device .....              | 74 |
| Terminal Operations .....                                  | 79 |
| Accessing the Terminal Menu .....                          | 79 |
| Using Serial SAMs .....                                    | 83 |
| Edit Device Screen Settings .....                          | 89 |

Troubleshooting ..... 91  
    Troubleshooting Tips ..... 91  
    Calling Black Box..... 92  
    Shipping and Packaging ..... 92

# 1. Specifications

During the course of this product's lifetime, modifications might be made to its hardware or firmware that could cause these specifications to change without notice.

---

## Octet KV1700 Product Specifications

---

### Agency Approvals

---

EN55022 Class A, EN55024, EN61000-3-2,  
EN61000-3-3, EN60950, FCC47CFR Part 15 Class  
A, CSA C22.2 No. 60950, IEC 60950, FCC Class A,  
UL 60950 third edition, VCCI Class A

---

### Mechanical

---

Height: 1U

---

Width: 17" (432 mm)

---

Depth: 13.62" (346 mm)

---

Weight: 8 lb (3.7 kg)

---

### Environmental/Power

---

Power consumption: 75 W

---

AC input power: max 75 W

---

Heat dissipation: 270 KJ

---

Humidity: 10-95% non-condensing

---

Operating temperature: 32° F-122° F; 0° C-50° C

---

Storage temperature: -4° to 140° F; -20° to 60° F

---

Operating voltage: 100-240 Vac

---

Power frequency: 50-60 Hz

---

### Ports

---

Network number: 1, RJ45, Ethernet, 10 Base-T, 100  
Base-T

---

Server ports: 42, RJ45 Octet interconnect

---

User ports: 4, RJ45 Octet interconnect

---

Terminal port: 1, DB9 male, RS232 serial

---

---

**Octet KV1701 Product Specifications**

---

**Agency Approvals**

---

EN55022 Class A, EN55024, EN61000-3-2, EN61000-3-3, EN60950, FCC47CFR Part 15 Class A, CSA C22.2 No. 60950, IEC 60950, FCC Class A, UL 60950 third edition, VCCI Class A

---

**Mechanical**

---

Height: 1U

---

Width: 17" (432 mm)

---

Depth: 11" (281 mm)

---

Weight: 8 lb (3.7 kg)

---

**Environmental/Power**

---

Power consumption: 75 W

---

AC input power: max 75 W

---

Heat dissipation: 270 Kj

---

Humidity: 10-95% non-condensing

---

Operating temperature: 32° F-122° F; 0° C-50° C

---

Storage temperature: -4° F-140° F; -20° C-60° C

---

Operating voltage: 100-240 Vac

---

Power frequency: 50-60 Hz

---

**Ports**

---

Network number: 1, RJ45, Ethernet, 10 Base-T, 100 Base-T

---

Server ports: 32, RJ45 Octet interconnect

---

User ports: 8, RJ45 Octet interconnect

---

Terminal port: 1, DB9 male, RS232 serial

---

---

**Octet KV1702 Product Specifications**

---

**Agency Approvals**

---

EN55022 Class A, EN55024, EN61000-3-2, EN61000-3-3, EN60950, FCC47CFR Part 15 Class A, CSA C22.2 No. 60950, IEC 60950, FCC Class A, UL 60950 third edition, VCCI Class A

---

**Mechanical**

---

Height: 2 U

---

Width: 17" (432 mm)

---

Depth: 11" (281 mm)

---

Weight: 16 lb (7.27 kg)

---

**Environmental/Power**

---

Power consumption: 150 W

---

AC input power: max 150 W

---

Heat dissipation: 610 Kj

---

Humidity: 10-95% non-condensing

---

Operating temperature: 32° F-122° F; 0° C-50° C

---

Storage temperature: -4° F-140° F; -20° C-60° C

---

Operating voltage: 100-240 Vac

---

Power frequency: 50-60 Hz

---

**Ports**

---

Network number: 1, RJ45, ethernet, 10 Base-T, 100 Base-T

---

Server ports: 64, RJ45 Octet interconnect

---

User ports: 16, RJ45 Octet interconnect

---

Terminal port: 1, DB9 male, RS232 serial

---

---

**Octet KV1703 Product Specifications**

---

**Agency Approvals**

---

EN55022 Class A, EN55024, EN61000-3-2, EN61000-3-3, EN60950, FCC47CFR Part 15 Class A, CSA C22.2 No. 60950, IEC 60950, FCC Class A, UL 60950 third edition, VCCI Class A

---

**Mechanical**

---

Height: 1 U

---

Width: 17" (432 mm)

---

Depth: 13.8" (351 mm)

---

Weight: 8 lb (3.7 kg)

---

**Environmental/Power**

---

Power consumption: 75 W

---

AC input power: max 75 W

---

Heat dissipation: 270 Kj

---

Humidity: 10-90% non-condensing

---

Operating temperature: 32° F-122° F; Ø° C-50° C

---

Storage temperature: -4° F-140° F; -20° C-60° C

---

Operating voltage: 100-240 Vac

---

Power frequency: 50-60 Hz

---

**Ports**

---

Network number: 1, RJ45, ethernet, 10 Base-T, 100 Base-T

---

Server ports: 16, RJ45 Octet interconnect

---

User ports: 4, RJ45 Octet interconnect

---

Terminal port: 1, DB9 male, RS232 serial

---

## Octet (KV1711, KV1711-R2, KV1712, KV1712-R2, KV1713) User Station Product Specifications

### Agency Approvals

EN55022 Class A, EN55024, EN61000-3-2, EN61000-3-3, EN60950, FCC47CFR Part 15 Class A, CSA C22.2 No. 60950, IEC 60950, FCC Class A, UL 60950 third edition, VCCI Class A

### Mechanical

Height: 1U

Width: 10.98" (27.9 cm)

Depth: 11.5" (29.2 cm)

Weight: 4.41 lb (2 kg)

### Environmental/Power

Power consumption: 25 W

AC input power: max 25 W

Heat dissipation: 90 Kj

AC input current rating: 1A

Humidity: 10-95% non-condensing

Operating temperature: 32° F-104° F; 0° C-40° C

Storage temperature: -4° F-104° F; -20° C-60° C

Operating voltage: 100-240 Vac

Power frequency: 50-60 Hz

### Ports

Input Ports: Octet KV1711, Octet KV1712, Octet KV1713: 2, RJ45 Octet interconnect, Octet KV1710: 1, RJ45 Octet interconnect

Output ports: 1 6-pin miniDIN, PS/2 keyboard, 1 6-pin miniDIN, PS/2 mouse; 1 8-pin miniDIN, 1 15HDD female, VGA video, Octet KV1713 includes multimedia and (2) USB type B connectors.

### Supported Hardware

---

**Octet (KV1711, KV1711-R2, KV1712, KV1712-R2, KV1713) User Station Product Specifications (Continued)**

---

KV1711 and KV1712 Peripherals: PS/2 keyboard and mouse, Sun keyboard and mouse  
KV1711-R2 and KV1712-R2 Peripherals: PS/2 keyboard and mouse, USB keyboard and mouse  
KV1713 Peripherals: PS/2 keyboard and mouse, USB keyboard and mouse

---

Video resolution: 1024 x 768 (1280 x 1024 KV1712 and KV1713 only) with 1,000 feet of UTP from server to user, 1280 x 1024 with 500 feet of UTP from server to user; 1600 x 1200 with 100 feet of UTP from server to user

---

Sync types: Separate horizontal and vertical; composite sync on Sun monitors

---

---

**Octet SAM (KV1720, KV1721, KV1722) Product Specifications**

---

**Agency Approvals**

---

EN55022 Class A, FCC15 Class A

---

**Mechanical**

---

Height: .83" (2.11 cm)

---

Width: 2.43" (6.17 cm)

---

Depth: 4.02" (10.21 cm)

---

Weight: .29 lb (.13 kg)

---

**Environmental/Power**

---

Power consumption: 130 mA

---

Humidity: 10-95% non-condensing

---

Operating temperature: 32°-122° F; 10° C-50° C

---

Storage temperature: 4° F-140° F; -20° C-60° C

---

Power supply: 5 VDC

---

**Ports**

---

Input ports for KV1720A: 2 6-pin miniDIN, PS/2 keyboard and mouse; 1 15HDD male, VGA Video, 1 RJ45 Octet interconnect

---



**Octet SAM (KV1720, KV1721, KV1722) Product Specifications (Continued)**

Input ports for KV1721A: 1 USB keyboard and mouse (supports Intel, Sun, Macintosh), 1 15HDD male, VGA video

Input ports for KV1722A: 1 8-pin miniDIN, Sun keyboard and mouse, 1 15HDD male, VGA video, 1 Sun 13W3 to HDD15 adapter

Output ports: 1 RJ45 Octet interconnect

**Additional Information**

Sync types: Separate horizontal and vertical, Sync on Green (as used on SGI and HP9000); composite sync on Sun monitors

Plug and Play: DDC2B

**User Ports**

Number: 1

Connection: RJ45 Octet interconnect

**Octet Serial SAM (KV1724) Product Specifications****Agency Approvals**

UL60950 third edition, C22.2 No. 60950, EN60950, IEC60950, FCC 47CFR Part15 Class A EN55022, EN55024

**Mechanical**

Height: 83" (2.0 cm)

Width: 2.43" (4.0 cm)

Depth: 4.02 " (21.5 cm)

Weight: .29 lb (.13 kg)

**Environmental/Power**

AC input current rating: 230 mA

AC input power: 6 VDC maximum

**Environmental/Power**

Operating Temperature: 50° F-104° F; 10° C-40° C

**Octet Serial SAM (KV1724) Product Specifications (Continued)**

Storage Temperature: -4° F-140° F; -20° C-60° C

Humidity: 10-95% non-condensing operating

**Serial Ports**

Type: DCE

Emulation: VT100

Baud Rate: 115200, 57600, 38400, 19200, 9600,  
2400,1200, 300 bits per second

Parity: Even, Odd, None

Flow Control: None, CTS/RTS or XOn/XOff

**Server Ports**

Number: 1

Type: DCE

Connectors: 9-pin D-sub female

**User Ports**

Number: 1

Connection: RJ45 Octet interconnect

**Octet SAMDM (KV1725, KV1726, KV1727) Product Specifications****Agency Approvals**

EN55022 Class A, FCC15 Class A

**Mechanical**

Height: .83" (2.11 cm)

Width: 2.43" (6.17 cm)

Depth: 4.02" (10.21 cm)

Weight: .29 lb (.13 kg)

**Environmental/Power**

Power consumption: 130 mA

Humidity: 10-95% non-condensing

**Octet SAMDM (KV1725, KV1726, KV1727) Product Specifications**


---

Operating temperature: 32°-122° F; 10° C-50° C

---

Storage temperature: 4° F-140° F; -20° C-60° C

---

Power supply: 5 VDC

---

**Ports**


---

Input ports for KV1725A: 1 6-pin miniDIN, PS/2 keyboard, 1 6-pin miniDIN, PS/2 mouse;; 1 15HDD male, VGA Video, 1 RJ45 Octet interconnect, 1 DB9 RS232 serial, 1 3.5mm speaker and 1 3.5mm microphone

---

Input ports for KV1726A: 1 USB keyboard and mouse (supports Intel, Sun, Macintosh), 1 15HDD male, VGA video, 1 DB9 RS232 serial, 1 3.5mm speaker and 1 3.5mm microphone

---

Input ports for KV1727A: 1 8-pin miniDIN, Sun keyboard and mouse, 1 15HDD male, VGA video, 1 Sun 13W3 to HDD15 adapter, 1 DB9 RS232 serial, 1 3.5mm speaker and 1 3.5mm microphone

---

Output ports: 2 RJ45 Octet interconnect

---

**Additional Information**


---

Sync types: Separate horizontal and vertical, Sync on Green (as used on SGI and HP9000); composite sync on Sun monitors

---

Plug and Play: DDC2B

---

**User Ports**


---

Number: 2

---

Connection: RJ45 Octet interconnect

---



## 2. Product Overview

The Black Box Octet<sup>®</sup> switch is a KVM (keyboard, video and mouse) switch that allows users to access multiple system servers or serial devices from a single keyboard, monitor and mouse. Multiple users in different locations can share access to PC, USB or Sun servers and serial devices.

A typical Octet switching system consists of one or more Octet switches, user stations and Octet server access modules. Up to three tiers of Octet switches can be cascaded to provide seamless access to a large number of target devices. Other KVM switches, including Black Box and non-Black Box branded, may also be attached in a cascaded system but do not provide seamless cascading.

All Octet switches are rack mountable and are equipped with the Black Box On-Screen Display (OSD) and the Octaware<sup>®</sup> Java<sup>™</sup>-based system administration tool.

### 2.1 Features and Benefits

#### Multiplatform

With the Octet switching system, you can access any combination of PC, USB or Sun servers and serial devices using a single keyboard and mouse.

#### Connection sharing

Two or more users can share access to the same target device simultaneously through the Octet switch. When sharing a connection to a target device, all users see the video but only one user at a time controls the keyboard and mouse.

#### Security

The Octet KVM switching system allows you to house valuable equipment in controlled areas. Octet server access modules are compact devices that eliminate cable bulk and prevent unauthorized access to a target device through cable manipulation. You can control user access by assigning rights to each username for specific target devices. Administrative privileges, usernames and the serial port are also password-protected.

#### LDAP user authentication

The Octet switch supports the LDAP (Lightweight Directory Access Protocol) user authentication mode. LDAP provides the Active Directory for username and password authentication.

#### Advanced video compensation

The Octet user stations and Octet server access modules provide advanced video compensation that automatically maximizes video quality for long distance communications. You can also manually adjust video quality for specific servers or user stations.

#### Scalable architecture

The Octet switching system scalable architecture can easily accommodate additional servers and users. Octet server access modules, user stations and switches are pre-assigned unique identification numbers (UIDs), allowing you to easily reconfigure the switching system. Name changes to Octet server access modules are automatically sent to all attached user stations, even if the units are on different networks.

## **Audio and serial support**

You can use the Octet switching system to access audio and serial data from connected target devices. To access this feature, the Octet switching system must include multimedia-capable devices and a user station and Octet server access module that support audio and serial emulation.

## **Extended keyboard and mouse support**

You can use a variety of keyboards and mouse devices to access any target device in the Octet switching system. Most user stations support PS/2, USB and Sun keyboard and mouse types. Some user stations also support the Pinnacle FAK (Fast Action Keyboard) and Chyron Duet keyboard.

## **Broadcast configurations with nVision router control**

In Octet switching system broadcast configurations, studio operators can use Pinnacle FAK or Chyron keyboards and have access to Deko, Chyron CG and other machines used for delivery of live content. Editing suites have access to Avid, SGI and storage machines with full media provided from these machines through an Octet switch and nVision router combination. Broadcast engineers have full access to all servers and equipment to provide maintenance and support. In addition, all valuable equipment is secure and housed in a safe environment.

Connecting an nVision router to the Octet switching system provides video and audio routing functionality to users. When a user in the Octet switching system connects to a target device, the nVision router will automatically connect the audio and video signals from the target device to the user's workstation.

## **Seamless cascading**

You can increase the number of target devices that users can access by creating a cascaded switching system. You can connect target devices to up to three levels of Octet or non-Black Box KVM switches. When cascading Octet switches, you can seamlessly connect to any target device from a single list in the OSD, as if all the target devices were connected to one switch. You can also cascade non-Black Box KVM switches, but to access the attached target devices you must first select the non-Black Box switch from the OSD target list, and then connect to the target device using the methods provided by the non-Black Box KVM switch.

## **Octet OSD graphical user interface**

With the OSD, you can use your keyboard or mouse to select any attached target device. This easy-to-use, menu-driven interface also enables you to administer security settings, language and keyboard selection, hotkey sequences and other features.

## **Administration using the Octoware software**

The Octoware Java-based system administration software tool is supplied with each Octet switch. Use it to assign names to attached target devices and users, designate user access rights, monitor switching system events, and upgrade firmware. You can also use Octoware software to configure Octet switching system installations remotely, eliminating the need to configure each unit separately.

## **System monitoring using the SNMP interface**

The Octet switch supports the Simple Network Management Protocol (SNMP) to remotely monitor the switch via the ethernet port. Once SNMP is configured, you can use

the SNMP protocol to manage and control user stations and their connections in the switching system.

## 2.2 Glossary

The following terms are used throughout this documentation:

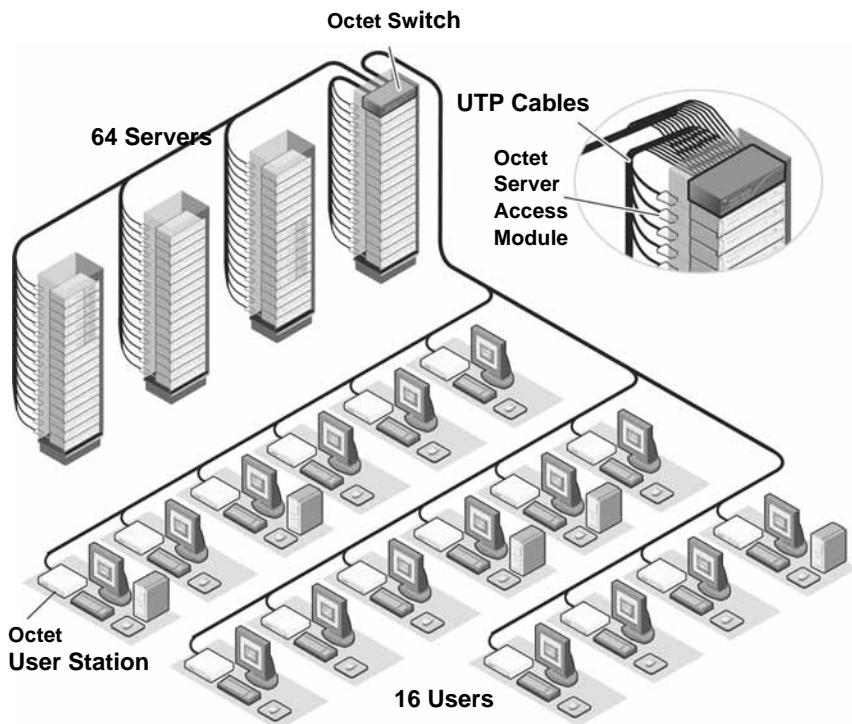
- Cascading – Connecting multiple KVM switches to an Octet switch, providing additional connections for target devices. Cascading expands the number of target devices that can be connected to the Octet switching system.
- Console – The user station and peripheral devices used by each local user.
- Octet server access module – The primary interface between an attached device (KVM switch, serial device or PS/2, Sun or USB server) and the Octet switching system. Octet server access modules are server-powered and provide keyboard emulation, DDC (Digital Data Channel) and Octet switching system support.
- Peripheral devices – The set of communication devices connected to each user station. May include keyboard, monitor, mouse, speakers and headphones.
- Switch – Equipment that provides KVM connectivity to attached target devices.
- Switching system – A set of switches and attached target devices, user stations, Octet server access modules and peripheral devices.
- Target device – Equipment such as a server or serial device that is attached through an Octet server access module to a switch or user station and can be accessed through the switching system.
- Unit – Includes switches, user stations and target devices; this term is used when the procedure is referring to any or all.
- User station – The interface between the Octet switch and system users, storing local (console) settings and providing connections for peripheral devices. The user station also provides the OSD for target device selection and administration.

## 2.3 Component Overview

An Octet switching system typically consists of four main components:

- One or more Octet switches.
- One or more Black Box Octet matrix user stations.
- One or more Black Box Octet server access modules, available in several different types including the SAM, SAMDM and Serial SAM modules.
- Unshielded Twisted Pair (UTP) cables.

A typical Octet switching system configuration is illustrated in Figure 2-1.



**Figure 2-1. Typical Octet Switching System Configuration**

## The Octet switch

The Octet switch provides the framework for the Octet switching system and is available in a variety of matrix sizes. Each Octet switch can be cascaded to create larger system configurations. The Octet switch stores a full database of user rights and server names and communicates with the Octaware software through an IP (Internet Protocol) port.

## The Octet user station

The Octet user station, the interface between the Octet switch and system users, stores local (console) settings and provides connections for peripheral devices. The user station also provides the OSD for target device selection and administration.

## The Octet switch Octet server access modules

The Octet server access module is the primary interface between an attached device (KVM switch, serial device or PS/2, Sun or USB server) and the Octet switching system. If the switch loses power, the target devices will continue to power the Octet server access modules. This Keep Alive functionality ensures continued keyboard and mouse operability and prevents data loss. Available in three types, Octet server access modules also provide keyboard emulation, DDC (Digital Data Channel), and Octet switching system support.



- SAM module – a standard Octet server access module that connects a target device to the switching system. SAM modules are available for PS/2, USB and Sun VGA or 13W3 interfaces.
- SAMDM module – a two-port Octet server access module that enables one server to be shared between two Octet switches, increasing the number of users that can be added to the switching system. The SAMDM module also enables the multimedia feature (audio and serial data communication) when it is connected to a user station that supports this feature. SAMDM modules are available as PS/2, USB and Sun VGA interface modules.
- Serial SAM (serial) module – a DCE (Data Communication Equipment) device that is the primary interface between a serial device and the Octet switching system. It supports VT100 terminal emulation, break suppression and port history. See *Appendix B: Using AMIQ-SRL Modules* on page 79 for more information.

Octet server access modules are connected to the switching system with UTP cabling and eliminate the need for additional cables or extra rack spaces. Each Octet server access module has a factory-assigned unique number that identifies the attached target device within the system.

### UTP cables

You may use any combination of CAT 5, CAT 5e and CAT 6 cables in the Octet switching system.

---

**NOTE:**

Throughout this manual, UTP refers to any CAT cable used by the Octet switching system.

---

## 2.4 Safety Precautions

To avoid potential video and/or keyboard problems when using Black Box products:

- If the building has 3-phase AC power, ensure that the server and monitor are on the same phase. For best results, they should be on the same circuit.

To avoid potentially fatal shock hazard and possible damage to equipment, please observe the following precautions:

- Do not use a 2-wire extension cord in any Black Box product configuration.
- Test AC outlets at the server and monitor for proper polarity and grounding.
- Use only with grounded outlets at both the server and monitor. When using a backup Uninterruptible Power Supply (UPS), power the server, the monitor and the Octet switch off the supply.

---

**NOTE:**

The AC inlet is the main disconnect.

---

### DC installation safety considerations

As a safety precaution, install this product in an area with limited or controlled access. A readily accessible disconnect device that is suitably approved and rated shall be incorporated in the field wiring. Connect field wiring from earth ground to the screw terminal marked with the ground symbol. Terminals will accommodate wiring from 26 to 12 AWG (up to 2.5 mm<sup>2</sup> maximum cross section). Strip each wire, insert it in the square opening in the terminal block and tighten the screw above it to a maximum of 70 ounce-inches (0.5 Nm) using either a flat or Phillips-head screwdriver.

**Rack mount safety considerations**

- **Elevated Ambient Temperature:** If installed in a closed rack assembly, the operation temperature of the rack environment may be greater than room ambient. Use care not to exceed the rated maximum ambient temperature of the unit.
- **Reduced Air Flow:** Installation of the equipment in a rack should be such that the amount of airflow required for safe operation of the equipment is not compromised.
- **Mechanical Loading:** Mounting of the equipment in the rack should be such that a hazardous condition is not achieved due to uneven mechanical loading.
- **Circuit Overloading:** Consideration should be given to the connection of the equipment to the supply circuit and the effect that overloading of circuits might have on overcurrent protection and supply wiring. Consider equipment nameplate ratings for maximum current.
- **Reliable Earthing:** Reliable earthing of rack mounted equipment should be maintained. Pay particular attention to supply connections other than direct connections to the branch circuit (for example, use of power strips).

## 3. Installation

### 3.1 Octet Switching Systems

Octet switching systems consist of an Octet switch or switches, user stations, target devices, Octet server access modules and peripheral devices. See Figure 3.1 on page 26 and Figure 3-2 on page 27 for examples of switching system configurations.

### 3.2 Getting Started

Before installing your Octet switching system, make sure you have access to the following items:

- The Octet switch and all of the items supplied with it. These items may include a power cord, rack mounting brackets, a null modem cable, installation CDs and help materials.
- UTP cables for each target device and user station you plan to attach to the switching system.
- One SAM or SAMDM module for each server and one Serial SAM module for each serial device.
- Octoware software, available by free download at [www.blackbox.com](http://www.blackbox.com) or on the installation CD included with the Octet switch.

Figure 3.1 illustrates one possible switching system configuration using SAM and Serial SAM modules.

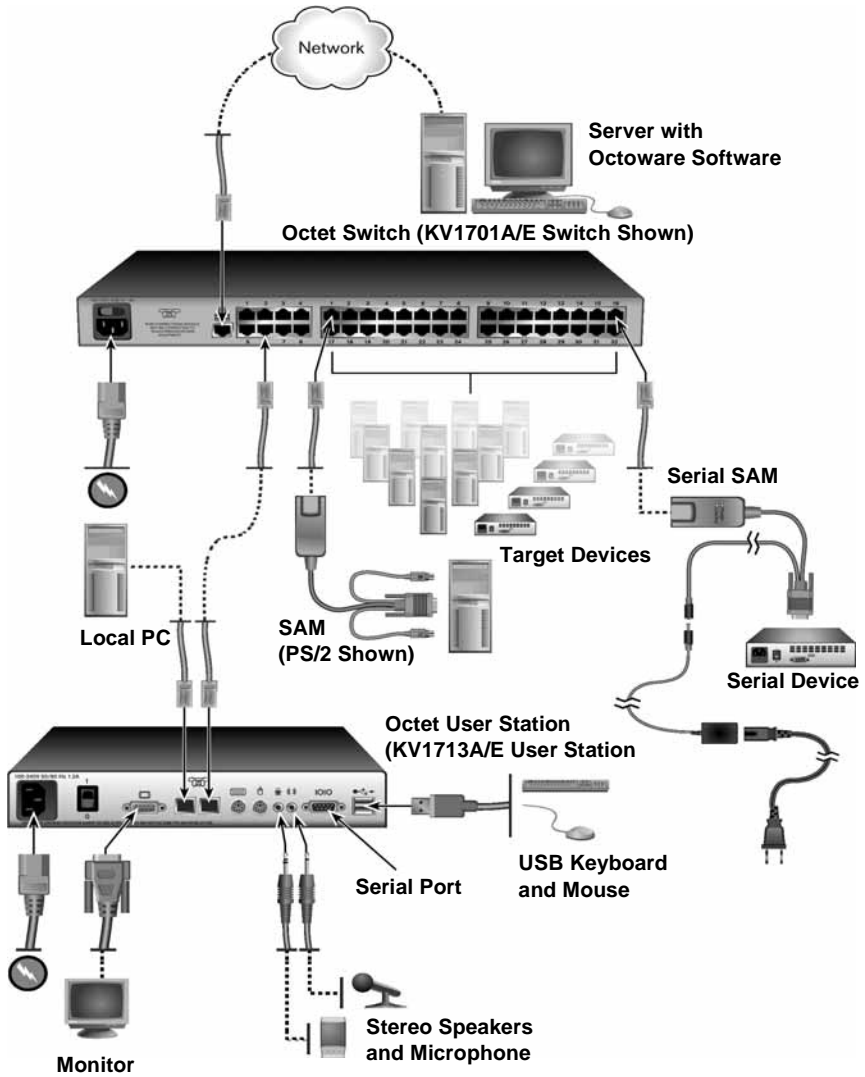


Figure 3.1: Octet Switching System Configuration with SAMs and Serial SAMs

Figure 3-2 illustrates another possible switching system configuration using SAMDM modules, specialized Octet server access modules with dual port connectivity and audio and serial connections.

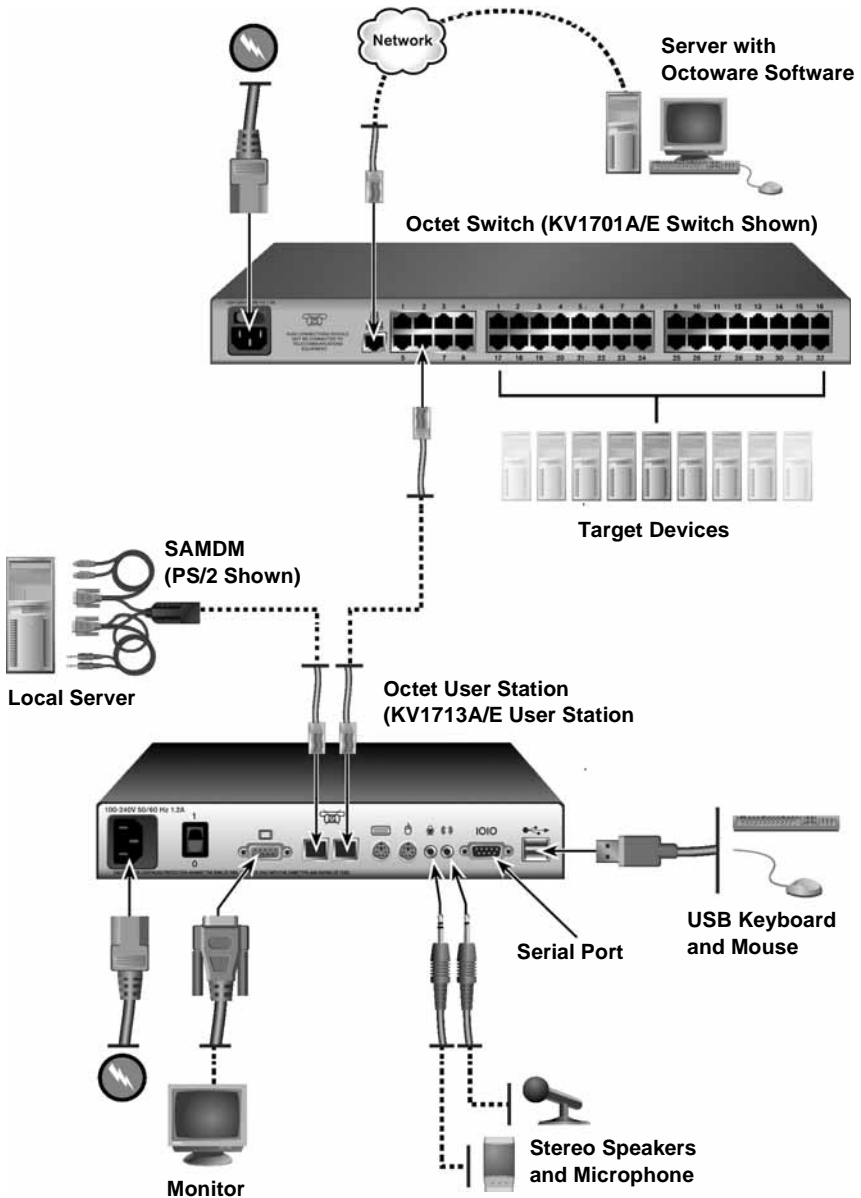


Figure 3-2. Octet Switching System Configuration with SAMDMs

### 3.3 Rack Mounting an Octet Switch

A rack mounting kit is supplied with each Octet switch. You may either place the Octet switch on the rack shelf or mount the switch directly into an Electronic Industries Alliance (EIA) standard rack.

---

**CAUTION: Rack Loading -**

Overloading or uneven loading of racks may result in shelf or rack failure, causing damage to equipment and possible personal injury. Stabilize racks in a permanent location before loading begins. Mount components beginning at the bottom of the rack, then work to the top. Do not exceed your rack load rating.

---

---

**CAUTION: Power Considerations -**

Connect only to the power source specified on the unit. When multiple electrical components are installed in a rack, ensure that the total component power ratings do not exceed circuit capabilities. Overloaded power sources and extension cords present fire and shock hazards.

---

**To install the rack mounting bracket:**

1. Remove the two rack mounting screws from each side of the Octet switch.
2. Place the rack mounting brackets next to the switch as illustrated in Figure 3-3.
3. Insert the screws supplied with the rack mounting kit through the holes of the brackets and into the Octet switch. Tighten the screws securely.

Install the Octet switch into the rack using the approved method of the rack manufacturer.



Figure 3-3. Octet Switch Rack Mounting Diagram

### 3.4 Installing an Octet Switch

To install a new Octet switch, you will connect power sources, configure network settings and connect the switch to the local area network (LAN).

---

**NOTE:**

Turn off the Octet switch and disconnect the power cord from the AC outlet before servicing.

---

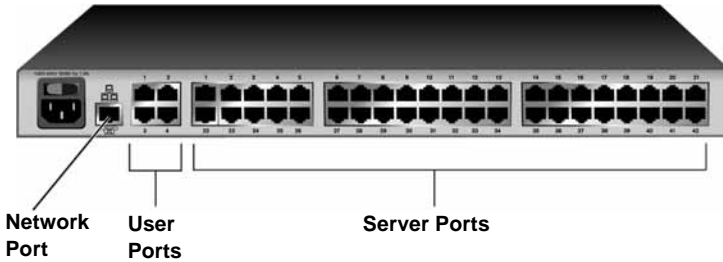


Figure 3-4. Example of an Octet Switch Back Panel (KV1700A/E Switch Shown)

---

**CAUTION:**

**To reduce the risk of electric shock or damage to your equipment -**

- Do not disable the power cord grounding plug. The grounding plug is an important safety feature.
  - Plug the power cord into a grounded (earthed) outlet that is easily accessible at all times.
  - Disconnect the power from the unit by unplugging the power cord from either the electrical outlet or the unit.
- 

**To connect power sources:**

Attach one end of the supplied power cord into the back panel of the Octet switch and attach the other end to an AC power source.

**To configure network settings for the switch:**

1. Use the supplied modem cable to connect a terminal or PC running terminal emulation software (such as HyperTerminal<sup>®</sup>) to the labeled terminal port of the Octet switch. The terminal should be set to 9600 baud, 8 bits, 1 stop bit, no parity and no flow control.
2. Power up the Octet switch.  
The Power indicator on the front of the switch will remain orange for approximately 30 seconds while performing a self-test and then change to green. This indicates a healthy condition.
3. When you first access the switch, you will be prompted through the Terminal window to enter a username.
  - a. Enter the username **admin**. By default, a password is not required. Once you have access to the Octet switch terminal applications menu, you can change the default username and password for the serial port. For more information see *Set/Change Password* on page 66.
  - b. Press **Enter**.
4. The Octet switch Console menu will open automatically. Select option 1, *Network Configuration*.
  - a. Select option 1 to set the IP address.
  - b. Select option 2 to set your netmask.
  - c. Select option 3 to set your default gateway.
5. Type **0** to return to the Octet switch Console menu.
6. Complete one of the following steps to set the configuration ID for the Octet switch.
  - If all Octet switches in your installation are part of the same Octet switching system configuration, leave the configuration ID set to **00000**.

- If you are running more than one Octet switching system configuration within your subnet, designate the group to which this Octet switch belongs. Select option 2 and enter the configuration ID for your Octet switch. A configuration ID will designate an Octet switch as part of a unique installation. When change commands are issued through the Octaware software, only units with the same configuration ID as the Octaware software will be affected. Refer to *System Management* on page 66 for more information on setting configuration IDs.
7. Type **0** to return to the Octet switch Console menu.
  8. Select option 3 and follow the prompts to password protect your Octet switching system terminal settings.

**CAUTION:**

This password places your Octet switch terminal in a secure mode. This password should be guarded like any network password and care should be taken to avoid forgetting or misplacing it. This password cannot be reset or recovered if lost or forgotten. Should you lose your password, please contact Black Box Technical Support for assistance.

9. Type **0** to exit the Octet switching system Console menu.

You can configure other switch settings using the Terminal Applications menu. Refer to Chapter 4 beginning on page 65 for more details.

**To connect the Octet switch to the LAN:**

Attach a UTP cable to the Network port on the back panel of the Octet switch and connect the switch to the LAN.

**3.5 Connecting Target Devices to the Octet Switch**

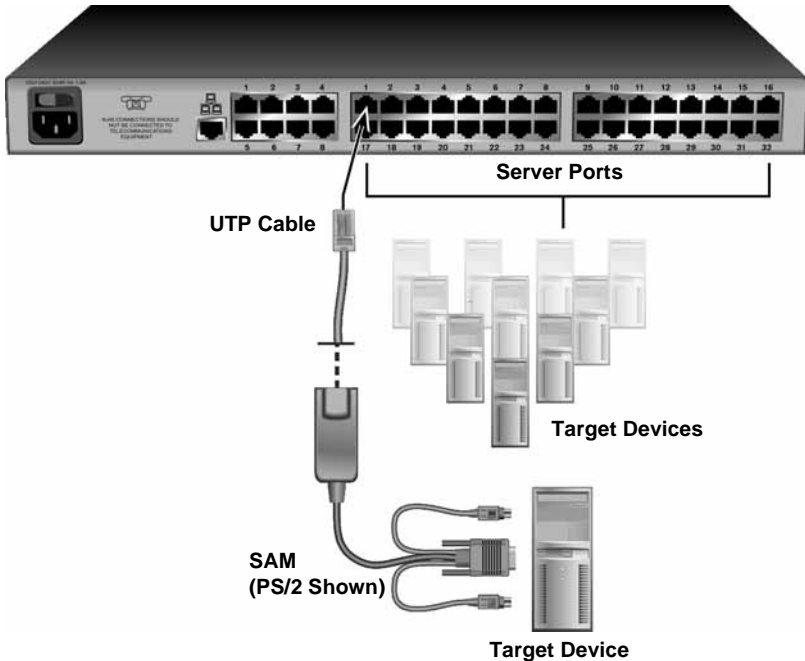
Once the Octet switch is installed, attach servers or serial devices to the switch using Octet server access modules. Figure 3-5 on page 31 illustrates how to connect target devices to the switching system.

**To connect servers to the Octet switching system:**

1. Choose an appropriate Octet server access module and insert the connectors into the corresponding ports on the back of the server.  
Some Octet server access modules provide audio and serial connectors, which may be left unattached if this functionality is not required for the switching system.
2. Attach one end of a UTP cable into the RJ-45 port on the Octet server access module. Attach the other end of the cable to an RJ-45 server port on the Octet switch.



Octet Switch (KV1701A/E Switch Shown)



**Figure 3-5. Connecting Target Devices to an Octet Switch (KV1701A/E Switch Shown)**

3. For future reference, note the unique identifier (UID) on the back of the Octet server access module and the target device to which it is attached.
4. Repeat this procedure for every server that will be attached to the Octet switching system.

**To connect serial devices to the Octet switching system:**

---

**NOTE:**

The Serial SAM is a DCE device and only supports VT100 terminal emulation.

---

1. Attach the Serial SAM to the serial port of the device to be attached.
2. Attach one end of a UTP cable to the RJ-45 connector on the Serial SAM. Attach the other end of the cable to an RJ-45 server port on the back panel of the Octet switch.
3. Attach the power supply to the power connector on the Serial SAM. Up to four Serial SAMs can be powered from a single power supply.
4. Attach the Serial SAM power supply to an AC wall outlet.

Repeat this procedure for every serial device that will be attached to the Octet switching system. See Chapter 6 beginning on page 83 for more information about using Serial SAMs.

### 3.6 Connecting Users to the Octet Switching System

Once all target devices are attached, add users by attaching user stations and peripheral devices to the Octet switching system. Figure 3-6 illustrates how to connect users to the switching system.

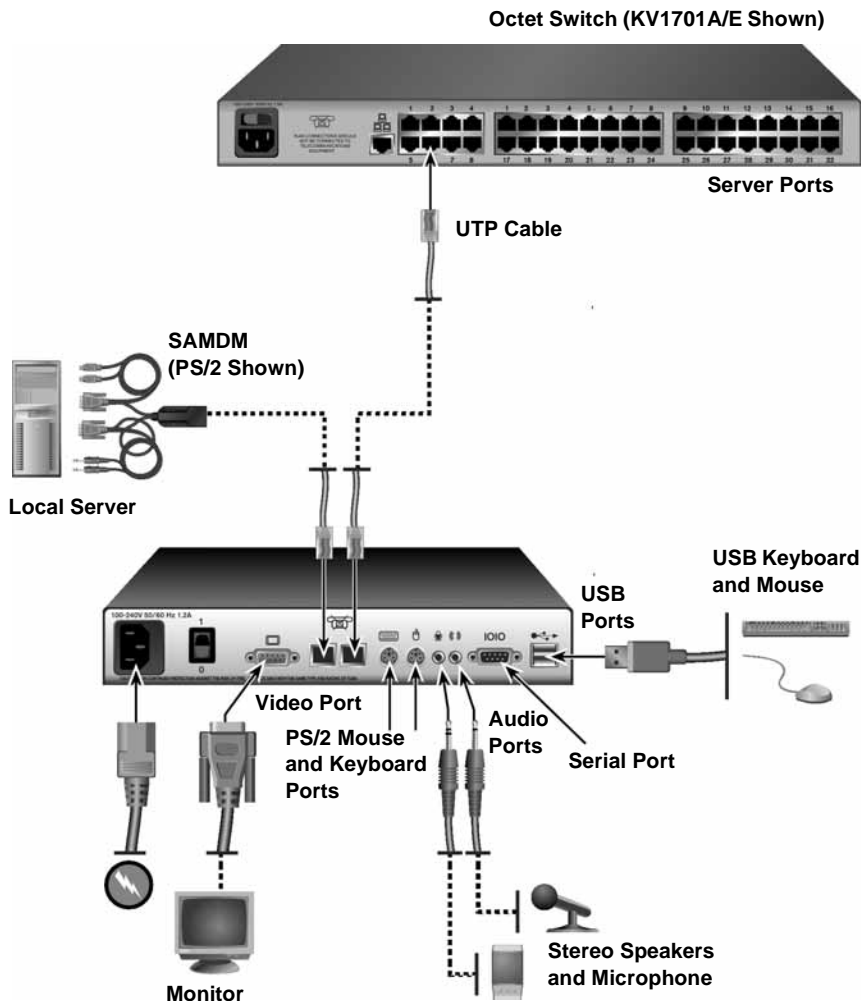


Figure 3-6. Example of an Octet User Station Back Panel (KV1713A/E User Station Shown)

#### Supported keyboard and mouse types

To determine what keyboard and mouse types your user station supports, examine the available ports on the back panel of the user station. USB and PS/2 ports are designated by

symbols as shown in Figure 3-6 and Sun ports (not shown) are labeled. If an appropriate port is available, the keyboard or mouse type is supported by the user station.

Pinnacle FAK and Chyron Duet keyboards are connected through the PS/2 port. If these specialized keyboards are supported on your user station, you will be able to select the corresponding keyboard type using the OSD.

### To connect users to the Octet switching system:

1. Place the Octet user station near the monitor. The user station can be used as a monitor stand.
2. Attach peripheral devices to the corresponding ports on the back panel of the user station.
3. Attach one end of a UTP cable into an RJ-45 port on the user station. Attach the other end of the cable to an RJ-45 user port on the Octet switch.

---

**NOTE:** You may only connect each user station to one Octet switch.

---

4. Attach one end of the supplied power cord to the power socket on the back panel of the user station and attach the other end to an AC wall outlet.

### To set the keyboard type:

If you attached a Pinnacle FAK or Chyron Duet keyboard to the user station, complete the following steps to activate the keyboard in the OSD:

1. Press **Ctrl+Ctrl** to launch the OSD.
2. Click the *Console* tab, then click the down arrow button to display the Configure screen.
3. Select the appropriate keyboard type from the Type drop-down menu. The drop-down menu only allows you to select keyboard types supported by the attached user station.
4. Click *Apply*.
5. If you connected a Pinnacle FAK keyboard, complete the following steps:
  - a. Click the *Admin* tab.
  - b. Select the target device that will be running software that requires Pinnacle FAK support.
  - c. Click *Edit device*.
  - d. Select *Pinnacle FAK* from the Emulation drop-down menu. You can only edit the emulation mode if the device type is PS/2. (If you are using a Chyron Duet keyboard, the Emulation mode should be Standard.)
  - e. Click *Apply*.
6. Close the OSD.

## 3.7 Connecting a Local Server to the Octet Switching System

After all users are connected to the Octet switching system, you can attach a local server. The local server can be accessed from the user station to which it is attached, but not by other users in the switching system. For illustrations of switching systems with a local server, see Figure 3-2 on page 27.

### To connect a local server to the Octet switch:

1. Choose an appropriate Octet server access module and insert the connectors into the corresponding ports on the back of the server.  
Some Octet server access modules also provide audio and serial connectors, which may be left unconnected if this functionality is not required for the switching system.
2. Attach one end of a UTP cable into the RJ-45 port on your Octet server access module. Attach the other end of the cable to an RJ-45 server port on the Octet user station.
3. Note the unique identifier (UID) on the back of the Octet server access module for future reference.

## 3.8 Connecting an SAMDM Module for Dual Port Output

The SAMDM module supports connectivity to one or two Octet switches, enabling access from twice the number of user stations without the need to cascade switches.

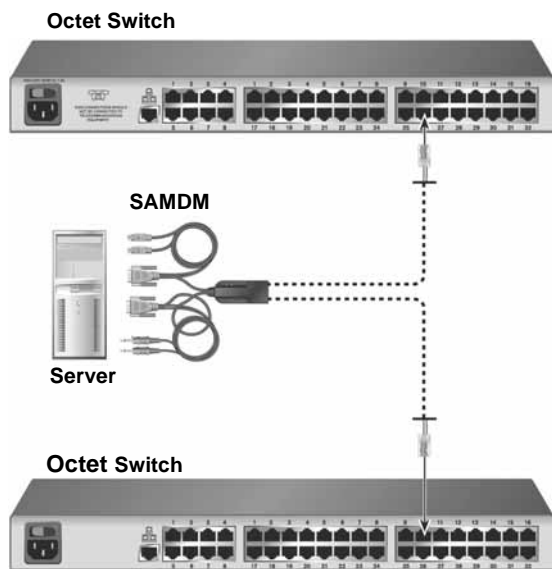


Figure 3-7. SAMDM Dual Port Connectivity

### To connect an SAMDM for dual port output:

1. Power down the target device.
2. Attach the SAMDM keyboard, video, mouse, audio and serial connectors into the corresponding ports on the back of the target device. Audio and serial connections may be left unconnected if this functionality is not required for the switching system.
3. Repeat step 2 for each additional target device to be connected to the Octet switch.
4. Power up the target device. When the server has completely powered up, proceed to the next step.

5. Attach one end of a UTP cable into a numbered server port on one of the Octet switches. Attach the other end into either RJ-45 port on the SAMDM. Repeat this step to attach the second Octet switch to the remaining RJ-45 port on the SAMDM.
6. If the Octet switches are not already powered, do so now.

**NOTE:**

If a target device is unavailable through the Octet switching system, make sure that all Octet switching system target devices and components are powered up and all cables are correctly attached. If operation is not restored, test the connection with another SAMDM or with another port on the Octet switch.

### 3.9 Installing a Cascaded Octet Switching System

Multiple KVM switches can be connected to the switching system to provide access to additional target devices. You can connect target devices to up to three levels of Octet or non-Black Box KVM switches. When cascading Octet switches, you can seamlessly connect to any target device from a single list in the OSD, as if all the target devices were connected to one switch. You can also cascade non-Black Box KVM switches, but to access the attached target devices you must first select the non-Black Box switch from the OSD target list, and then connect to the target device using the methods provided by the non-Black Box KVM switch. To use seamless cascading, you will need to configure the cascaded target device as Multiple Device Mode (MDM).

#### Blocking and non-blocking configurations

Before setting up a cascaded Octet switching system, evaluate how many users and how many target devices are needed in your system. You can then choose how to best configure your system: as a blocking or a non-blocking configuration, or a combination.

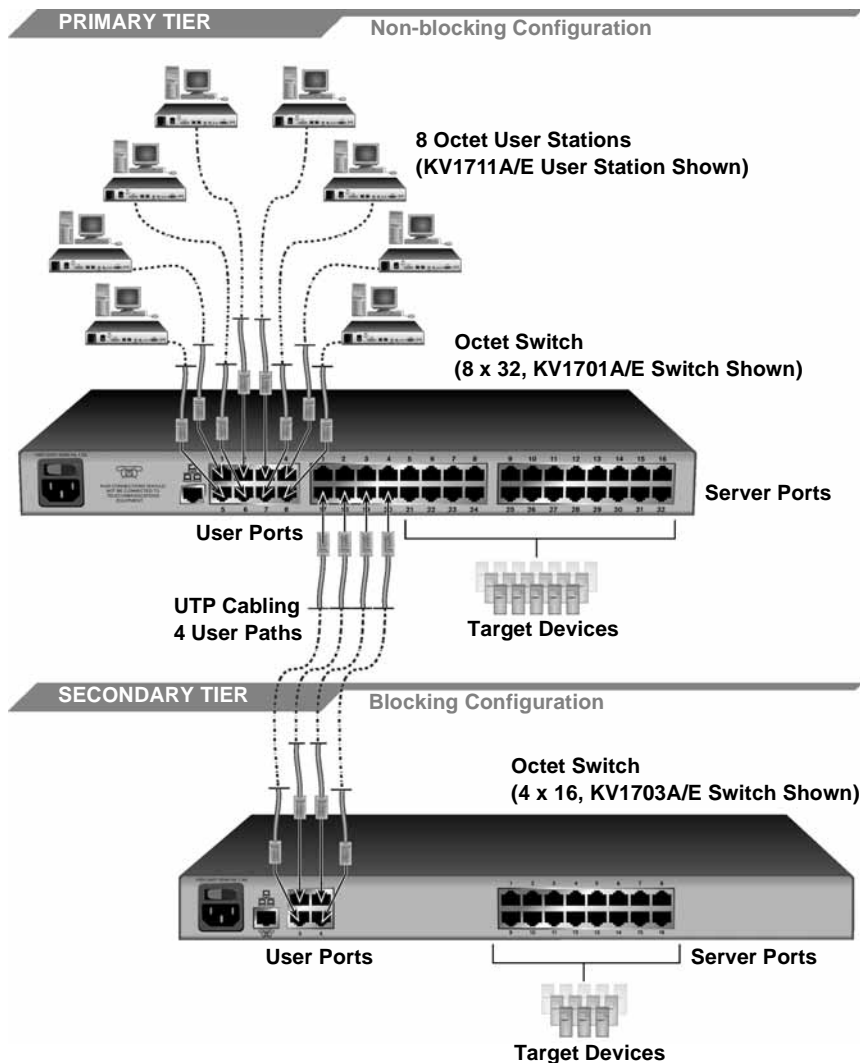
Whether the configuration is blocking or non-blocking is determined by how user paths are connected in the switching system. In a cascaded system, UTP cable is connected from the server ports on the primary switch to the user ports on the secondary switches. To add a tertiary level of switches, UTP cable is connected from the server ports on secondary switches to the user ports on the tertiary switches (see Figure 3-9 on page 37 for an example). Each length of UTP cable acts as a path to connect users to target devices.

Blocking and non-blocking configurations are defined as follows:

- Non-blocking configuration – the number of user paths between each level of switches is equal to or greater than the number of users the primary switch supports. The maximum number of user paths are available and thus any user (with the appropriate access rights) can access any target device in the switching system at any time.
- Blocking configuration – the number of user paths between each level of switches is less than the number of users the top level switch supports. A limited number of user paths are available in this configuration, which at times might prevent or block a user from accessing a target device. However, you may be able to attach more target devices to the switching system when using a blocking configuration.

Figure 3-8 illustrates one possible blocking configuration in an Octet switching system. In this example, a four-user Octet switch is cascaded off of an eight-user Octet switch. The target devices attached to the primary switch will never be blocked and can be accessed at any time. The secondary switch has only four user paths attached to it, creating a blocking configuration. When connections are made to four of the target devices on the secondary switch, there are no more user paths available for that switch. The other users in the

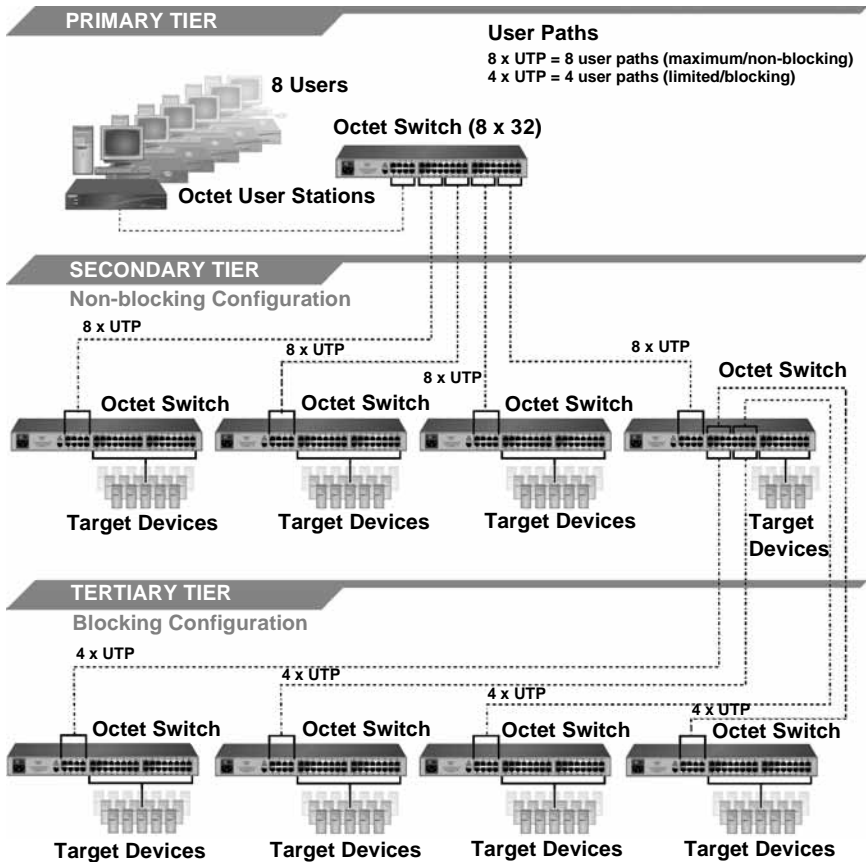
system can share access to the connected target devices, but they cannot connect to any other target device on that switch. Once a user closes a connection to a target device, that user path is open and can be used to connect to any target device in the switching system.



**Figure 3-8. Cascaded Octet Switching System, Blocking Configuration**

Figure 3-9 illustrates a cascaded Octet switching system with a combination of blocking and non-blocking configurations. In this example, the primary switch supports eight users, and eight user paths are connected to each secondary switch, creating a non-blocking configuration. The target devices attached to the secondary tier will never be blocked and can be accessed at any time. The secondary switches support eight users, but only four user paths are attached to each tertiary switch, creating a blocking configuration. Thus

only four target devices on each tertiary switch can be connected to simultaneously, but these four connections can be shared among eight users. Once a user closes a connection to a target device on a tertiary switch, that user path is open and can be used to connect to any target device in the switching system.



**Figure 3-9. Cascaded Octet Switching System, Combination of Configurations [KV1701A/E (8 x 32) Switches Shown]**

Although a blocking configuration limits user access, it can provide access to additional target devices in the switching system. In a blocking configuration, all of the available user paths from the primary switch are not connected, which might leave some server ports unconnected. These server ports can be used to attach additional target devices or cascaded switches.

When setting up your switching system, you may combine blocking and non-blocking configurations. Choose the best configuration or combination of configurations for your switching system. If you choose a blocking configuration, manage user access by planning which target devices are connected to each switch. For example, you might choose to split up target devices that require frequent access among each cascaded switch so the maximum number of user paths are available to connect to that target device.

**To install a cascaded Octet switching system:**

1. Position the Octet switches to be attached and select a switch to be the primary switch.
2. Attach one end of a UTP cable into a server port on the primary switch. Attach the other end of the cable to a user port on a switch on the secondary tier.  
To create a non-blocking configuration, continue this process until all the appropriate number of user paths have been connected.

To create a blocking configuration, continue this process until all of the user paths needed for your system have been connected. In a blocking configuration, user access will be limited but you may be able to attach more target devices or cascaded switches to the system. See *Blocking and non-blocking configurations* on page 35 for more information.

3. You can now connect target devices to the cascaded Octet switches (see *Connecting Target Devices to the Octet Switch* on page 30 for more information). You can also repeat steps 1 through 2 to cascade a third level of switches.

Once you connect target devices to the switching system, you will need to configure the cascaded target devices as MDM. For more information, see *Setting Device Properties* on page 51.

**To cascade other KVM switches from the Octet switch:**

1. Position the switches at the desired location. Make sure that they are turned off and unplugged.
2. Insert the keyboard, video and mouse connectors of an Octet server access module to the corresponding local user ports on each cascaded switch.
3. Attach a UTP cable to the RJ-45 port on the Octet server access module. Attach the other end of the cable to an RJ-45 server port on the primary Octet switch.

**NOTE:**

When you select the non-Black Box switch from the OSD, the OSD for that switch will open and allow you to connect to attached target devices.

**3.10 Installing Octoware Software**

Once all users, target devices and switches have been attached and connected to the LAN, it's best to install the Octoware software and synchronize it with the switching system.

If you have a previous Octoware software version installed, it's advisable to update the switching system with the most recent version of Octoware software. If you are updating to the Octoware software revision 5.0.x.x (or later) from 4.x.x.x (or earlier), it is also recommended that you update the firmware on Octet switches to revision 3.x.x.x (or later). The Octet switches must be at revision 3.x.x.x or later to be fully compatible with all revisions of the Octoware software from 5.0.x.x and later.

**NOTE:**

If you are installing an earlier version of the Octoware software, it's recommended that you delete the current database and then install the database of the desired version to guarantee its proper operation.



**To install the Octoware software for the first time:**

1. Using a UTP cable, connect the network port on the Octoware software server to the LAN. This server will host the Octoware software for the switching system.
2. Insert the Octoware software installation CD into an appropriate drive on the server and select *Setup*.
3. Follow the on-screen instructions.
4. Run the Octoware software. You will be prompted to type a password. The default password is **password**. To change the password, refer to the Octoware software online help program.
5. After initial installation, configure the network settings. For more information, see the Octoware software online help program.

**To update from Octoware software revision 3.0.x.x (or earlier):**

1. Ensure that the correct database information is distributed across the Octet switching system by performing a Synchronize System Database command from your existing Octoware software installation. Use the Octoware software database as the database reference source.
2. Make a note of all user and server groups that have been defined. This upgrade will not restore current user and server group information.
3. Stop the mySql service. You must have Administrator privileges to do this. If you are unsure about this process, contact your system administrator.
4. Uninstall the existing the Octoware software installation.
5. Continue with the instructions provided above for installing the Octoware software for the first time.

**To update from the Octoware software revision 4.x.x.x (or later):**

1. Ensure that the correct database information is distributed across the system by performing a Synchronize System Database command from your existing installation. Use the Octoware software database as your database source.
2. When synchronization has completed, close your version of the Octoware software.
3. Place the installation CD for your new version of the Octoware software into your CD drive, and select *Setup*.
4. Follow the on-screen instructions. You may install the new version of the Octoware software over the old version, and you may choose to keep your existing database intact.
5. Proceed to *Configuring Octoware software*.

## 3.11 Configuring Octoware software

Once Octoware software is installed, you can add or discover Octet switches and synchronize Octoware software with the Octet switch database. You can then use the Octoware software to manage the database and assign unique names to users, target devices and switches. For more information, see the Octoware software online Help program.

**To begin using the Octoware software:**

1. After updating the Octoware software, follow the instructions in the Octoware software online help program for *Discovering Devices* or *Adding Devices*. If the Octoware software exists on the same physical network and subnet as the Octet switches, then you will only need to perform a Discover Devices command, and all of your Octet switches will be automatically discovered. If they are not automatically discovered, check that the config ID specified in the Network Settings dialog box matches the config ID specified on all of your Octet switches.

---

**NOTE:**

If the Octoware software does not recognize an attached switch as expected, refer to the troubleshooting section of the Octoware software online help program.

---

2. Perform a Synchronize System Database command on your newly configured system.
  - a. Choose one of your Octet switches as your database source.
  - b. Select the *Overwrite* option.
  - c. Click the *Start* button.
3. Update the firmware on your Octet switches, if you have not already done so. For more information on Flash upgrading, including how to verify your firmware version, see the Octoware software online Help program. After updating firmware, proceed to step 4.

---

**NOTE:**

If the Octet switches do not have the latest firmware, synchronization of the system databases may not be performed successfully.

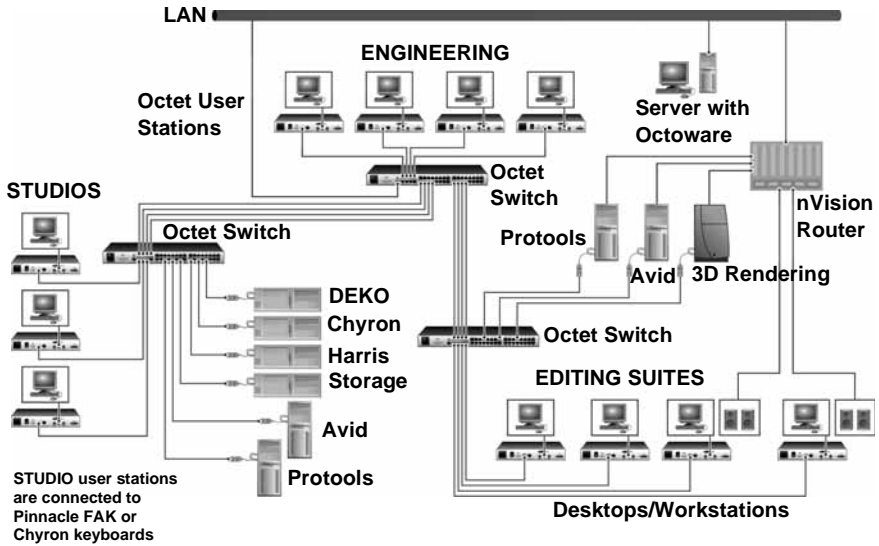
---

4. If you wish to set up user groups and server groups, you may do so now.

For more information about using Octoware software to manage the Octet switching system, see the Octoware software online help program.

## 3.12 Octet Switching Systems in Broadcast Environments

The Octet switching system can be configured for a broadcast environment as illustrated in Figure 3-10. In broadcast configurations, studio operators can use Pinnacle FAK or Chyron keyboards and have access to Deko, Chyron CG and other machines used for delivery of live content. Editing suites have access to Avid, SGI and storage machines with full media provided from these machines through an Octet switch and nVision router combination. Broadcast engineers have full access to all servers and equipment to provide maintenance and support. In addition, all valuable equipment is secured and housed in a safe environment.



**Figure 3-10. Octet Switching System in a Broadcast Environment**  
**[KV1701A/E Switches, KV1712A/E User Stations Shown]**

### Using nVision routers

You can connect an nVision router to the Octet switching system and provide video and audio routing functionality to users. A typical Octet switch and nVision router configuration is illustrated in Figure 3-10. In this configuration, when a user in the Octet switching system connects to a target device, the nVision router will automatically connect the audio and video signals from the target device to the user's workstation. Both standalone and backup nVision routers can be attached to the switching system.

Configure the nVision router in the Octaware software by using one of the Configure Resource Router options (Define TRG, Define CRG or Define DRG). Using the Configure Resource Router feature, you can create connections tables and associate them with system servers and supported user stations, like the KV1712A/E, KV1712A/E-R2 and KV1713A/E user stations. These connection paths enable any input to be switched to any output having the same signal type. Before defining resource groups, you have the option of naming the router levels and ports on the selected router.

#### To connect an nVision router to the Octet switching system:

1. Using a UTP cable, connect the Pri-Controller port on the back of the nVision router to the LAN.
2. If you have not already done so, use a UTP cable to connect the network port on the Octaware software server to the LAN.
3. If you have not already done so, use a UTP cable to connect the Network port on the back of the Octet switch to your LAN.

#### To set up the nVision router:

Before you can begin using the nVision router in the Octet switching system, you will need to configure the router through the serial port and set up network connections. For

specific setup procedures for your nVision router, see the nVision help documentation that came with the router.

### To configure the nVision router in the Octeware software:

To properly operate the nVision router in the Octet switching system, you must configure the nVision router using Octeware software. For more information and procedures, refer to the *Resource Switching Router* section in the Octeware software online help program.

## 3.13 Flash Upgrading the Octet Switching System

Before you begin using the Octet switching system, it's best to update firmware to the most current version available. Check the Black Box web site at [www.blackbox.com](http://www.blackbox.com) for new firmware updates. Flash upgrades allow you to update the firmware of your Octet switch and incorporate new features into your existing switching system. For more information on Flash upgrading, including how to verify your firmware version, see the Octeware software online help program.

---

#### NOTE:

You must use Octeware software to Flash upgrade the Octet switch.

---

## 3.14 Unit LEDs

Once you have installed and powered up the Octet switching system, you may check the LEDs to ensure that each unit is receiving power and that all connections are working.

### Octet switch

There are three groups of LEDs on the front panel of an Octet switch.



Figure 3-11. Octet Switch LEDs (KV1701A/E Switch Shown)

- Server port LEDs – Each LED corresponds to a server port and illuminates in green when the server or cascaded Octet switch is attached and powered up.
- LAN and Power LEDs – The green LAN LINK LED illuminates when a valid connection is made to the network port of the Octet switch. The amber LAN 100M LED indicates the speed of the attached LAN. This LED illuminates when a 100Mb connection is made or remains unlit when a 10Mb connection is made. The green/amber PWR LED is amber when the Octet switch is powered up and green when the Octet switch is operating.
- User port LEDs – Each LEDs correspond to a user port and illuminates in green when the Octet user station or cascaded Octet switch is attached and powered up.

## Octet user station

### Front panel LEDs

There are two blue LEDs on the front panel of the Octet user station.

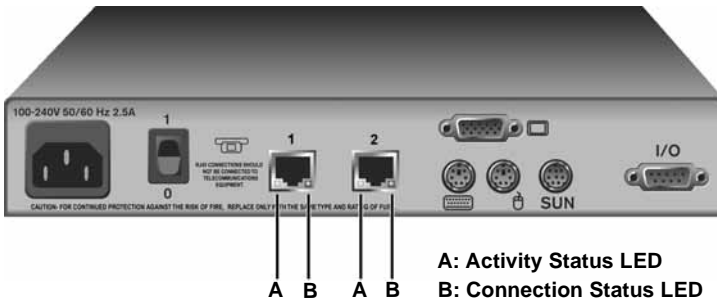


**Figure 3-12. Octet User Station Front Panel (KV1712A/E User Station Shown)**

- Power LED – The upper LED is illuminated when power is connected and off when power is absent.
- Active LED – The lower LED blinks when the OSD is displayed and is illuminated when there is a valid connection between the Octet user station and an SAM or SAMDM module or an Octet switch.

### Back panel LEDs

The back panel of the Octet user station has two LEDs mounted on each RJ-45 port.

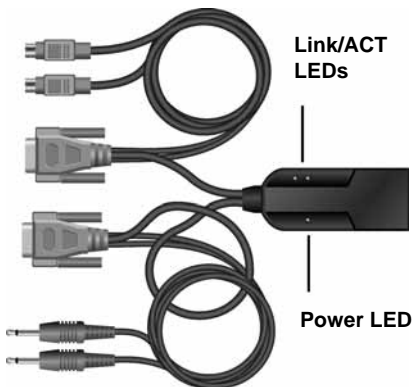


**Figure 3-13. Octet User Station Back Panel (KV1711A/E User Station Shown)**

- Activity status LED – The yellow LEDs blinks when the link connection is active and data is being transferred and are not lit when the link connection is inactive.
- Connection status LED – The green LED is illuminated when the port is connected.

### Octet server access module

The Octet server access modules have green LEDs indicating power and link status.



**Figure 3-14. Octet Server Access Modules with LEDs (SAMDM Shown)**

- **Power LED** – The green Power LED is illuminated when power is connected. If the Serial SAM module loses power, the serial interface will not generate a serial break to the attached device.
- **Link/ACT LEDs** – A green Link/ACT LED is illuminated when the attached server is powered, and a valid UTP connection has been made to an Octet switch. Link/ACT LEDs blink while the module is being upgraded or when a fault has been detected.

---

**NOTE:**

Some first-generation Octet server access modules do not have a *Power LED*.

---

## 4. Operations

### 4.1 OSD Overview

Use the intuitive OSD graphical user interface to configure the switching system and select target devices. The OSD is easily accessed and always available at the desktop. Figure 4-1 illustrates an example OSD screen.

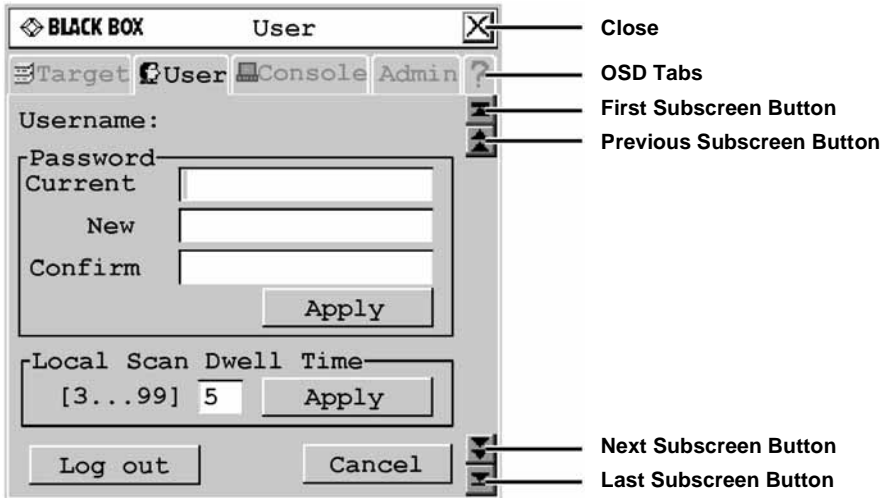


Figure 4-1. Example of the OSD

### Accessing the OSD

To launch the OSD, press the left or right Ctrl key twice within one second. Alternatively, you may press the **Alt** or **Shift** key twice or press Print Screen to launch the OSD. You may use any of these hotkey sequences instead of pressing **Ctrl+Ctrl** in any procedure in this document. To specify which hotkey sequence or set of sequences may be used to launch the OSD, see *Changing the OSD hotkey sequence* on page 45.

### Changing the OSD hotkey sequence

You can set the hotkey sequence used to launch the OSD for each user station.

#### To change the OSD hotkey sequence:

1. Press **Ctrl+Ctrl** to launch the OSD.
2. Click the *Console* tab, then click the down arrow button to access the Configure screen.
3. Select a new hotkey sequence under the hotkey drop-down menu, or choose *All* to select all sequences. Selecting *All* will allow you to use any of the sequences in the list to launch the OSD.
4. To save changes, click *Apply*. The selected sequence changes from blue to black text. To exit the OSD, click *Cancel* or *X*.

## OSD tabs

The OSD consists of five main tabs: Target, User, Console, Admin and ?.

### Target

The Target tab lists the target devices that can be accessed from your Octet user station and the available modes for these target devices.

### User

Use the User tab to control and configure your system at the local port. The User tab screens enable you to change your password, change scan dwell time, set the target flag layout, select target device hotkey functions and configuring the audio and serial features.

### Console

The Console tab is used to configure local settings for the Octet user station including country-specific keyboard layout, keyboard type, hotkey sequences and inactivity time.

### Admin

The Admin tab displays options for editing user and target device information. Only users with Administrator rights can access editing screens to configure user and target device information for the Octet switching system. Any user can access editing screens for the local server. The Admin tab includes a Users Admin screen and a Device Admin screen.

- **Users Admin** – This screen allows the Administrator to add, edit and delete users, assign rights to each target device and force user login. For more information about user administration, see *Users* on page 53.
- **Device Admin** – This screen allows the Administrator to edit the device name, the keyboard emulation and layout and the Octet server access module MDM configuration for cascaded switches. Changes to the target device name are propagated to the Octet server access module immediately. The Administrator can also configure the audio and serial emulation for the selected device.

### ?

The ? tab provides access to the OSD help and displays the software version and name of the user station.

## 4.2 Target Devices

Target devices that are attached to the switching system are displayed on the Target tab. You can select a target device in Shared, Private, Scan or Maintain connection modes. If you have not logged in successfully to the Octet switching system, the target devices attached to the user station will not display in the target device list. You can access the target devices by double-clicking on *Matrix System* in the list and then logging in again.

### Connection modes

#### Shared

If two or more users need to access the same target device, they can share access to it through the Octet switch. Sharing allows multiple users to view a target device channel at the same time, but only one can enter data through the keyboard or mouse at any given



time. When the active user stops all keyboard and mouse activity, another user can take control of the target device.

### Private

When you select a target device after clicking the *Private* radio button, no other user station in the switching system can switch to that target device. You can take the channel out of Private mode by switching to another target device or reselecting the same target device in Shared mode.

### Scan

In Scan mode, multiple target devices can be monitored in sequence. When keyboard or mouse activity is detected, scanning stops, allowing users to operate an attached target device. Scanning will resume when keyboard or mouse activity stops.

### Maintain

Use Maintain mode when you wish to remain connected to a target device while rebooting or maintaining the target device. Once selected in Maintain mode, the target device will not lose contact with the switch when power to the target device is cycled.

---

**NOTE:**

Target devices in Maintain mode cannot be shared.

---

## Accessing target devices

Use the Target tab in the OSD main dialog box to connect to target devices and to change the access mode. When you connect to a target device, the Octet switch reconfigures the keyboard and mouse to the appropriate settings for the selected target device.

### To select a target device:

1. Press **Ctrl+Ctrl** to launch the OSD.
2. Click the *Target* tab.
3. Select an access mode: *Shared*, *Private*, or *Maintain*. You can also select *Scan* to scan the switching system. See *Scanning the switching system* on page 52 for more information.
4. Double-click the target device name.
5. -or-
6. Click the target device name and then click the *Start* button.
7. To disconnect from a selected target device, launch the OSD and click the *Clear* button or switch to another target device.

### Setting a target device hotkey

You can quickly access target devices by using hotkey sequences. In Figure 4-2, a hotkey sequence of **Ctrl+F1** is set for a target device named "aSystemServer1." Whenever **Ctrl+F1** is pressed, the system will automatically switch to the designated target device.

### To set or change a target device hotkey:

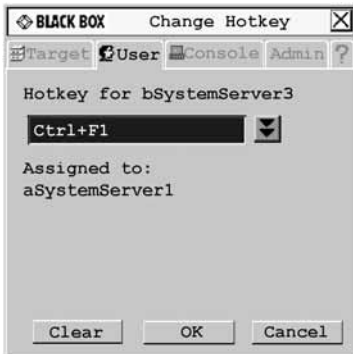
1. Press **Ctrl+Ctrl** to launch the OSD.
2. Click the *User* tab. The User screen displays.

- Click the down arrow button twice or **Ctrl + page end** to display the Server Hotkey screen.



**Figure 4-2. Server Hotkey Screen**

- Type the name of the target device for which you wish to set or change the associated hotkey. A list of target devices displays.  
To sort the target device list by name, click *Name*. To sort the target device list by hotkey, click *Hotkey*.
- If you would like to remove all hotkey assignments, click *Clear All*.
- Click the target device you wish to set or change.
- Click the *Change* button. The Change Hotkey screen displays.



**Figure 4-3. Change Hotkey Screen**

- If the selected hotkey is already assigned to a different target device, you can re-assign the selected hotkey or return to the Change Hotkey screen to select another hotkey. To clear a hotkey assignment to a target device, select the hotkey and click *Clear*.
- Click the down arrow button and select the desired hotkey from the drop-down list.
- To save changes, click *OK*. To exit the OSD, click *Cancel* or *X*.

## Setting a quick switch hotkey for target devices

A quick switch hotkey allows you to quickly connect to target devices using a hotkey sequence relative to the placement of the target device on the OSD list. The **Ctrl+Up** hotkey sequence will connect you to a target device one above the currently connected target device on the OSD list. The **Ctrl+Down** hotkey sequence will connect you to the target device directly below the currently connected target device on the OSD list.

### To enable the quick switch hotkey:

1. Press **Ctrl+Ctrl** to launch the OSD.
2. Click the *Console* tab, then click the down arrow button to display the Configure screen.

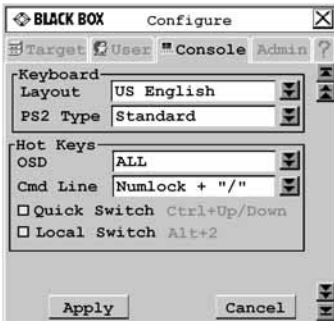


Figure 4-4. Configure Screen

3. Select *Quick Switch*.
4. To save changes, click *Apply*. To exit the OSD, click *Cancel* or *X*.

---

#### NOTE:

Quick switch hotkeys only work if there is an existing connection and the OSD is not activated.

---

## Setting a local switch hotkey

A local switch hotkey allows you to force a connection to the local server by typing **Alt+2**.

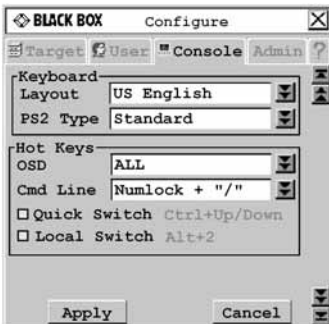


Figure 4-5. Configure Screen

**To enable the local switch hotkey:**

1. Press **Ctrl+Ctrl** to launch the OSD.
2. Click the *Console* tab, then click the down arrow button to display the Configure screen.
3. Select *Local Switch*.
4. To save changes, click *Apply*. To exit the OSD, click *Cancel* or *X*.

**NOTE:**

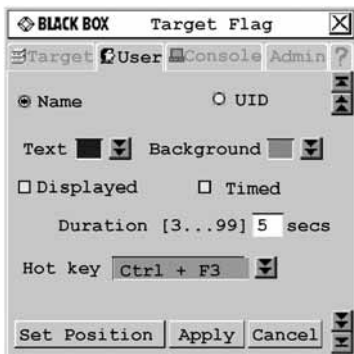
The local switch hotkey will not force a connection if two local servers are attached to the user station or if the OSD is open when the hotkey is entered.

**Setting a target flag**

After a connection is made to a target device, a target flag will appear briefly on screen and display the name or UID of the selected target device. Each user can configure the target flag settings according to his or her preference.

**To configure the target flag:**

1. Press **Ctrl+Ctrl** to launch the OSD.
2. Click the *User* tab. The User screen displays.
3. Click the down arrow button to display the Target Flag screen.



**Figure 4-6. Target Flag Screen**

4. Configure the target flag settings as needed.
  - a. To set information – Select *Name* to display the connected target device name on the target flag.  
-or-  
Select *UID* to display the connected target device UID on the target flag.
  - b. To set the text color – Select the text color for the target flag from the Text drop-down list.
  - c. To set the background color – Select the background color for the target flag from the Background drop-down list.

- d. To set display properties – If you want the target flag to be displayed, select *Displayed*. If you do not want the target flag to be displayed, clear the *Displayed* checkbox.
- e. To set display time – If you want the target flag to be displayed for a certain amount of time, select *Timed* and type the desired target flag duration between 3 and 99 seconds.  
-or-  
If you want the target flag to flash briefly on screen, clear the *Timed* checkbox. The target flag will appear for less than three seconds.
- f. To set a hotkey – Select a hotkey from the Hotkey drop-down list. If the target flag is displayed, entering this hotkey will hide the flag. Conversely, if the target flag is hidden, entering this hotkey will display the flag.
- g. To set the flag position – Click *Set Position*. The Set Position screen displays.



Figure 4-7. Set Position Screen

Move the target flag by dragging and dropping the title bar of the Set Position screen to a desired position.

After placing the target flag in the desired position, click *Set Position* to set the position and return to the Target Flag screen.

-or-

Press **Esc** to return to the Target flag screen without saving the new position.

5. To save changes, click *Apply*. To exit the OSD, click *Cancel* or *X*.

### Viewing MDM target device information

The Octet switch systems supports seamless (MDM) target devices.

#### To view MDM target device information:

1. Press **Ctrl+Ctrl** to launch the OSD.
2. Click the *Admin* tab. The Device Admin screen displays.
3. Select the MDM target device for which you wish to view version, configuration and connection information.
4. Click the *Edit Device* button. The Edit Device screen displays.
5. Click the *Info* button. The Information screen displays.



Figure 4-8. Information Screen

6. To return to the Device Admin screen, click *Close*. To exit the OSD, click *X*.

## Scanning the switching system

You can use the Scan connection mode to monitor multiple target devices in sequence.

### To scan an Octet switching system:

1. Press **Ctrl+Ctrl** to launch the OSD.
2. Click the *Target* tab, then select *Scan*.

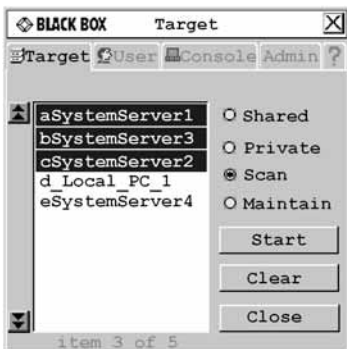


Figure 4-9. Target Screen

3. Press and hold the **Ctrl** key while you individually select the target devices that you would like to scan. Alternately, if you wish to select a group of target devices in sequence, you can click the first target device in the sequence, press and hold the **Shift** key and select the last target device to highlight the group. Clicking *Clear* will deselect all of target devices in the list.
4. Click the *Start* button to begin scanning.

Once scanning is initiated, the Octet switch will cycle through the selected target devices in alphabetical order.

If the user has full access rights to the current target device and the Octet user station detects keyboard or mouse activity, scanning is suspended. This allows the user to work

with the target device. When mouse and keyboard activity stops, scanning resumes with the next channel in sequence. If the user has view only access rights to the current target device, scanning will not be suspended if the user types on the keyboard or moves the mouse.

Dwell time, the length of time each server channel remains on screen, is configurable and can be changed at any time through the User tab. Default dwell time is three seconds.

### To stop scanning the switching system:

1. Press **Ctrl+Ctrl**. The Target tab screen redisplay.
2. Click the *Stop* button.
3. Click *Close* or *X* to exit the OSD.

### To change the scan dwell time:

---

#### NOTE:

If the lockdown mode is on, none of the fields in this screen will be active, with the exception of the log out button.

---

1. Press **Ctrl+Ctrl** to launch the OSD.
2. Click the *User* tab.



Figure 4-10. User Screen

3. Change the scan dwell time, designated in seconds, by typing a number between 3 and 99.
4. To save changes, click *Apply*. To exit the OSD, click *Cancel* or *X*.

## 4.3 Users

The Octet switching system can be configured to support up to 128 users. Each user is identified by a unique name and password and can be assigned full, view only or no rights to target devices attached to the Octet switch.

### Logging in as a user

Each user can set or change the password for his or her login. Administrators can reset passwords for each user if needed and can allow specific users to have a blank password. When the Octet user station is powered, you are prompted for your username and password. Passwords must be 6 to 15 characters, or 0 characters if a blank password is

enabled for that user. All ASCII characters can be used in the login prompt. The characters (‘ ^ ~) must be typed twice before they display in the password field.

Once you have entered your login name and password, the OSD is displayed. You can change your password at any time using the OSD. However, if you used the Octoware software to configure user authentication through LDAP, you might need to change the user’s password on your Enterprise Server (for example, Active Directory server) instead of the OSD.

If you have not logged in successfully, the OSD displays the Matrix System label and the names of locally connected servers in the target device list. Double-clicking *Matrix System* switches you to the login dialog box, where you may re-attempt to log in.

### To change your user password:

---

#### NOTE:

If the lockdown mode is on, none of the fields in this screen will be active, with the exception of the log out button.

---

1. Press **Ctrl+Ctrl** to launch the OSD.
2. Click the *User* tab.



Figure 4-11. User Screen

3. Enter your current password.
4. Enter your new password and verify it in the fields provided. Your password must be at least six characters in length.

---

#### NOTE:

If you lose your password, contact Black Box Technical Support for assistance.

---

5. To save changes, click *Apply*. To exit the OSD, click *Cancel* or *X*.

## Logging out

### To log out of the Octet switching system:

1. Press **Ctrl+Ctrl** to launch the OSD.
2. Click the *User* tab.
3. Click *Log out*. The OSD logs out of the switching system and closes automatically.



## Managing the user database

To manage the user database, users must be logged as the Administrator. You may also use the Octoware software to manage the database.

### To add a user:

1. Press **Ctrl+Ctrl** to launch the OSD.
2. Click the *Admin* tab.
3. Click the down arrow button to display the User Admin screen. A list of users displays.



Figure 4-12. User Admin Screen

4. Click the *Add user* button. The Add User screen displays.



Figure 4.13: Add User Screen

5. Enter the name of the user in the User name field.
6. Enter the user's password and confirm it in the provided fields.  
-or-  
Select *Allow Blank Password* to enable the user to log in without entering a password.
7. To save changes, click *OK*. To exit the OSD, click *Cancel* or *X*.

**To delete a user:**

1. Press **Ctrl+Ctrl** to launch the OSD.
2. Click the *Admin* tab.
3. Click the down arrow button to display the User Admin screen.
4. Select the user you wish to delete.
5. Click the *Delete user* button.
6. When you are prompted to complete the deletion, click *Yes* or *No*.
7. Click *Close* or *X* to exit the OSD.

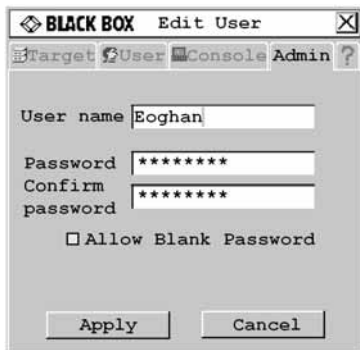
**Administering security settings**

To modify security settings, users must be logged as the Administrator. You may also use the Octoware software to administer settings.

By default all user stations are automatically logged in using the Administrator username and password. To restrict access to security settings, enable Force User Login to require all users to log in with a username and password each time the user station is accessed.

**To edit a user:**

1. Press **Ctrl+Ctrl** to launch the OSD.
2. Click the *Admin* tab.
3. Click the down arrow button to display the User Admin screen.
4. Select the user you wish to edit. Click the *Edit User* button. The Edit User screen displays.



**Figure 4-14. Edit User Screen - Normal User**

5. You may change the user's name or password or allow blank passwords.
6. To save changes, click *Apply*. To exit the OSD, click *Cancel* or *X*.

**To set user access rights:**

1. Press **Ctrl+Ctrl** to launch the OSD.
2. Click the *Admin* tab. Click the down arrow button to display the User Admin screen.
3. Select the user for which you wish to grant access rights.
4. Click the *User rights* button. The User Rights screen displays.



Figure 4-15. User Rights Screen

- To change a user's access rights to a single target device, click the target from the list of available target devices. Select the appropriate access level: *none*, *view* or *full*.

- or -

To change a user's access rights to multiple target devices, press and hold the **Ctrl** key while you individually select the target devices that you wish to be controlled externally. Alternately, if you wish to select a group of target devices in sequence, click the first target device in the sequence, press and hold the **Shift** key and select the last target device to highlight the group. Then select the appropriate access level: *none*, *view* or *full*.

- Press and hold the **Ctrl** key while you individually select the target devices that you wish to be controlled externally. Alternately, if you wish to select a group of target devices in sequence, click the first target device in the sequence, press and hold the **Shift** key and select the last target device to highlight the group.

---

**NOTE:**

User rights must be assigned to each MDM Octet server access module and MDM target device.

---

- Click *OK* to save changes and return to the User Admin screen. You may select another user to configure access rights or click *Close* or *X* to exit the OSD.

**To force user login:**

- Press **Ctrl+Ctrl** to launch the OSD.
- Click the *Admin* tab.
- Click the down arrow button to display the User Admin screen.
- Select *admin* from the list and click the *Edit user* button. The Edit User screen displays.



**Figure 4-16. Edit User Screen - Admin User**

5. If a password has not yet been assigned to *admin*, create one now by typing a password in the Password and Confirm Password fields.
6. Select *Force User Login* to force all users to log in with a username and password.
7. To save changes and return to the User Admin screen, click *Apply*. To exit the OSD, click *Cancel* or *X*.

## 4.4 Configuring Keyboard Settings

You can use keyboard layouts from multiple countries and regions in the Octet switching system. The Octet switch also supports multiple keyboard types, including any PS/2, USB or Sun keyboard, Pinnacle FAK or Chryon Duet.

### Keyboard layout

#### User station

To designate the country-specific layout for the keyboard attached to the user station, access the Console tab in the OSD. The following table lists supported keyboard layouts on the Octet user station.

#### Available Keyboard Layouts on the Octet User Station

| Keyboard Layouts |              |
|------------------|--------------|
| US English       | Japanese     |
| Belgian          | Korean       |
| Canadian-French  | Norwegian    |
| Danish           | Portuguese   |
| Dutch            | Spanish      |
| Finnish          | Swedish      |
| French           | Swiss-French |

## Available Keyboard Layouts on the Octet User Station (Continued)

| Keyboard Layouts |                |
|------------------|----------------|
| German           | Swiss-German   |
| Greek            | United Kingdom |
| Italian          |                |

### To configure keyboard layout for the user station:

1. Press **Ctrl+Ctrl** to launch the OSD.
2. Click the *Console* tab, then click the down arrow button to display the Configure screen.

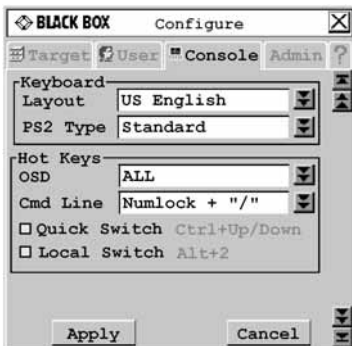


Figure 4-17. Configure Screen

3. Select a keyboard layout from the Layout drop-down menu.
4. To save changes, click *Apply*. To exit the OSD, click *Cancel* or *X*.

### Device

When connecting a non-U.S. 13W3, VGA Sun or USB server to an Octet switching system, you must manually set the keyboard for that target device. The following table lists supported keyboard layouts for USB and Sun Octet server access modules. For more information, see *Setting Device Properties* on page 67.

## Available Keyboard Layouts on USB and Sun Octet Access Modules

| Keyboard Layouts |            |
|------------------|------------|
| US English       | Korean     |
| Belgian          | Norwegian  |
| Canadian-French  | Portuguese |
| Danish           | Russian    |

## Available Keyboard Layouts on USB and Sun Octet Access Modules

| Keyboard Layouts |                |
|------------------|----------------|
| Dutch            | Spanish        |
| Finnish          | Swedish        |
| French           | Swiss-French   |
| German           | Swiss-German   |
| Greek            | Taiwanese      |
| Italian          | United Kingdom |
| Japanese         |                |

### Keyboard type

If you connected a PS/2, USB or Sun keyboard to the user station, you will not have to change the keyboard type. If you connected a Pinnacle FAK or Chyron Duet keyboard to the user station, complete the following steps to set the keyboard type.

#### To set the keyboard type on the user station:

1. Press **Ctrl+Ctrl** to launch the OSD.
2. Click the *Console* tab, then click the down arrow button to display the Configure screen.
3. The Type field displays the current keyboard type. The Type field changes to PS/2 Type if your Octet switching system includes an KV1713A/E user station.

The Type or PS/2 Type field is activated if your Octet switching system includes an KV1712A/E/KV1713A/E user station connected to a PS/2 keyboard. The Type or PS/2 Type field is deactivated in the following cases:

- Your system includes a KV1711A/E user station and is connected to a PS/2 keyboard. In this case, *Standard* is displayed in the Type field.
- Your system includes any version of the Octet user station and is connected to a Sun keyboard. In this case, *Sun* is displayed in the Type field.

If the Type or PS/2 Type field is activated, select *Standard*, *Pinnacle FAK* or *Chyron*. The change will be highlighted in blue text.

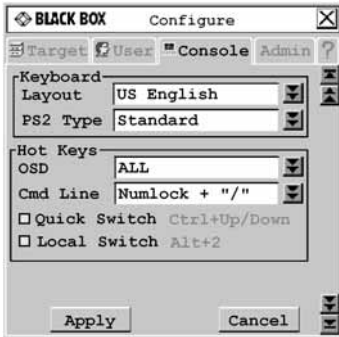


Figure 4-18. Configure Screen

**NOTE:**

Standard refers to any keyboard. If your KV1713A/E user station is connected to a Pinnacle FAK or Chyron Duet keyboard, you must select *Pinnacle FAK* or *Chyron Duet* in the PS/2 Type field to enable support for this keyboard. If your Octet switching system has connections to both PS/2 and USB keyboards, the USB keyboard takes precedence when both keyboards are used simultaneously.

Select the appropriate keyboard type from the Type drop-down menu. The drop-down menu only allows you to select keyboard types that the connected user station supports.

4. Click *Apply* to save changes.

-or-

Click *Cancel* to exit the OSD without saving changes

5. If you connected a Pinnacle FAK keyboard, complete the following steps:
  - a. Click the *Admin* tab.
  - b. Select the target device that will be running software that requires Pinnacle FAK support.
  - c. Click *Edit device*.
  - d. Select *Pinnacle FAK* from the Emulation drop-down menu. You can only edit the emulation mode if the device-type is PS/2. (If you are using a Chyron Duet keyboard, the Emulation mode should be Standard.)
6. To save changes, click *Apply*. To exit the OSD, click *Cancel* or *X*.

## Keyboard translation

The Octet user station allows you to use PS/2, USB or Sun keyboards to operate any type of attached target device. However, when crossing platforms, certain keys will need to be remapped in order to provide all of the functions available on the keyboard native to that platform.

For example, if you access a Sun workstation with a PS/2 keyboard, you will notice that the PS/2 keyboard does not have the **Stop** and **Again** keys that are on a true Sun keyboard. By enabling the Scroll Lock mode by pressing **Ctrl-Alt-Shift** and **Scroll Lock** at the same time, the **F1** and **F2** keys on the PS/2 keyboard function as the Sun **Stop** and **Again** keys. With Scroll Lock mode disabled, **F1** and **F2** function normally.

**NOTE:**

The *Scroll Lock* LED blinks if the mode is enabled.

Table shows the translations for a PS/2 keyboard to a Sun server. All mapped functions will only be valid when the Scroll Lock mode is enabled.

### PS/2 Keyboard to Sun Server

| Key | Sun   | Key        | Sun     |
|-----|-------|------------|---------|
| F1  | Stop  | F9         | Find    |
| F2  | Again | F10        | Cut     |
| F3  | Props | F11        | Power   |
| F4  | Undo  | F12        | Command |
| F5  | Front | keypad *   | Compose |
| F6  | Copy  | NUMLOCK    | Help    |
| F7  | Open  | keyboard / | Mute    |
| F8  | Paste | keyboard - | Vol -   |
| F8  | Paste | keyboard + | Vol +   |

### Using the Power/Sleep key

Table shows the Power/Sleep key on USB servers for Sun and PS/2 keyboards. Sun keyboards have a Power key used to power the workstation. Some PS/2 keyboards have a Sleep key to place the server in a stand-by or power saving mode.

### Power/Sleep for USB Servers

| Keyboard | Peripheral Key | Scroll Lock Mode | Server      |
|----------|----------------|------------------|-------------|
| PS/2     | Shift - F11    | Enabled          | Win 98/2000 |
|          | F11            | Enabled          | Win 98/Mac  |
|          | Sleep          | Enabled          | Win 98/Mac  |
| Sun      | Power          | Enabled          | Win 98/2000 |
|          | Power          | Enabled          | Win 98/Mac  |

### To issue the Power/Sleep command:

Enable the Scroll Lock mode and press **F11** (or the **Sleep** key) on a PS/2 keyboard.

-or-

For a Sun server, press the **Power** key.



## 4.5 Using Audio and Serial Data Emulation

Some Octet user stations and devices support audio and serial data emulation. In order for a user to receive audio and serial data, the following conditions must exist:

- The user must be logged into a user station that supports audio and serial emulation, such as the KV1713A/E user station.
- The user must be accessing a device that has been enabled by the Administrator to output audio and serial data.
- The target device must be connected to an SAMDM module.

Each user can configure the audio and serial settings that will be available when he or she logs in.

### To view and modify audio and serial settings for a user:

---

**CAUTION:**

Switching to an audio source that is set at high volume might harm your hearing.

---

1. Press **Ctrl+Ctrl** to launch the OSD.
2. Click the *User* tab. Click the down arrow button to display the Audio/Serial screen.

---

**NOTE:**

Selected settings in the Audio/Serial screen indicate a default status of *on* (enabled).

---



**Figure 4-19. Audio/Serial Screen (User Tab)**

3. Click the checkboxes to enable or disable speakers, microphone or serial emulation.
4. To save changes, click *Apply*. To exit the OSD, click *Cancel* or *X*.

### To view and modify admin audio and serial settings for a device:

1. Press **Ctrl+Ctrl** to launch the OSD.
2. Click the *Admin* tab. The Device Admin screen displays.

---

**NOTE:**

The Device Admin screen will display only the devices that are currently attached to the switching system and powered. Only the Administrator can edit Device attributes.

---

- A list of devices will display. In the Find field, click *name* to search by name.  
- or -  
Click *UID* to search by UID.

**NOTE:**

If a name has not been set for the device, a default name will be displayed. Clicking the *Reset name* button sets the device name back to its default.

- Select the device you wish to edit and click the *Edit Device* button. The Edit Device screen displays.
- Click the down arrow button to display the Audio/Serial screen.



**Figure 4-20. Audio/Serial Screen (Admin Tab)**

**NOTE:**

The first time this screen is accessed, the Audio out, Audio in and Serial checkboxes will be checked (enabled) for devices that are multimedia-capable.

- Click the *Audio out* (speakers), *Audio in* (mic) or *Serial* checkboxes to enable or disable as required for the selected device.
- To save changes, click *Apply*. To exit the OSD, click *Cancel* or *X*.

## 4.6 Viewing Octet Server Access Module Version Information

When Flash upgrading your Octet switching system, check the Octet server access module version to determine if firmware updates are needed.

### To view Octet server access module information:

- Press **Ctrl+Ctrl** to launch the OSD.
- Click the *Admin* tab. The Device Admin screen displays.
- Select the Octet server access module for which you wish to view version, configuration and connection information.
- Click the *Edit device* button. The Edit Device screen displays.
- Click the *Info* button. The Information screen displays.



Figure 4-21. Information Screen

6. Click *Close* to return to the Device Admin screen.
7. Click *Cancel* or *X* to exit the OSD.

To modify Octet server access module properties, see *Setting Device Properties* on page 67.

## 4.7 User Stations

You can configure settings specific to your user station by accessing the Console tab.

### To view the user station status:

1. Press **Ctrl+Ctrl** to launch the OSD.
2. Click the *Console* tab. The Status screen displays the connection status of the Octet user station.

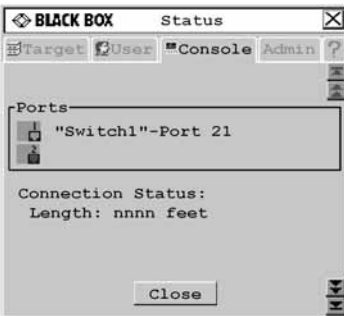


Figure 4-22. Status Screen

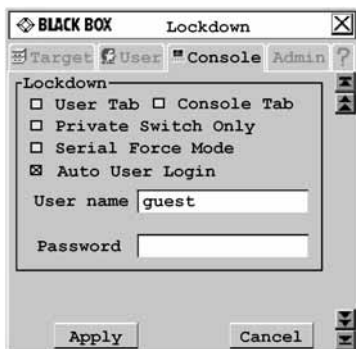
3. Click *Close* or *X* to exit the OSD.

### Locking user station settings

The Administrator may lock specific settings for each user station. Lockdown settings cannot be accessed by other users. See *Administering security settings* on page 56 for more information.

**To enable lockdown settings:**

1. Press **Ctrl+Ctrl** to launch the OSD.
2. Enable Force User Login, if necessary. See *Administering security settings* on page 56 for more information.
3. Click the *Console* tab, then click the down arrow button to display the Lockdown screen.



**Figure 4-23. Lockdown Screen (Settings for the KV1713A/E User Station Shown)**

**NOTE:**

Available lockdown settings vary by user station model. Only the lockdown settings supported on the user station you are configuring will be displayed.

4. Select or deselect any of the following settings as needed:
  - Select *User Tab* to prevent changes to the User tab.
  - Select *Console Tab* to prevent changes to the console data.
  - Select *Private Switch Only* to force Private mode connections to target devices.
  - Select *Serial Force Mode* to allow forced connections through the serial port. Using force connect commands, you can force a user station to connect to a target device through the serial port. See *Forcing a Connection to a Target Device* on page 74 for more information.
  - Select *Auto User Login* to force the user station to automatically log in a specific username each time there is a power cycle or hotplug. Enter the username and password in the fields provided to specify which user is automatically logged in.
  - Any user can disable auto user login by entering **disable auto user login** at the Command Line. See *OSD Command Line Operations* on page 70 and *Disabling Auto User Login* on page 71 for more information.
5. To save changes, click *Apply*. To exit the OSD, click *Cancel* or *X*.

**User station inactivity settings**

Use the Screen Saver, Log out and Inactivity Time options to control the behavior of your console during periods of inactivity. You can choose to display your screen saver or have your system log out when the time period designated in the Inactivity Time field has expired.

**To configure your console for inactivity time:**

1. Press **Ctrl+Ctrl** to launch the OSD.
2. Click the *Console* tab, then click the down arrow button to display the Inactivity screen.

**Figure 4-24. Inactivity Screen**

3. To display the screen saver after the specified period of inactivity time has elapsed, select *Screen Saver*.
4. To log your username out of the switching system after the specified period of inactivity time has elapsed, select *Logout*.
5. Enter the amount of time the user station will allow inactivity before applying the screen saver and/or log out settings.
6. To save changes, click *Apply*. To exit the OSD, click *Cancel* or *X*.

## 4.8 Setting Device Properties

The Octet switching system automatically recognizes all attached devices by their UID numbers, including seamless (MDM) Octet server access modules and MDM target devices. Depending on the device type and connection, the screens on the Admin tab allow you to view and change settings for devices in normal and seamless configurations.

**To edit a device (normal configuration):**

1. Press **Ctrl+Ctrl** to launch the OSD.
2. Click the *Admin* tab. The Device Admin screen displays.

**NOTE:**

The Device Admin screen will display only the devices that are currently attached to the switching system and powered. Only the Administrator can edit device attributes.



**Figure 4-25. Device Admin Screen**

3. A list of devices, including target devices and Octet server access modules, will display. In the Find field, click *name* to search by name.

- or -

Click *UID* to search by UID.

---

**NOTE:**

If a name has not been set for the device, a default name will be displayed. Clicking the *Reset name* button sets the device name to its default name.

---

4. Select the device you wish to edit and click the *Edit Device* button. The Edit Device screen displays..



**Figure 4-26. Edit Device Screen (Normal Configuration)**

The UID and Type fields are not editable. The Type field displays the type of device being edited, including one of the following:

- PS/2 Single-Port
- SUN Single-Port
- USB Single-Port
- PS/2 Dual-Port
- SUN Dual-Port
- USB Dual-Port

- Serial Single-Port
  - MDM target device
5. Type a new name (1-15 characters) for the device in the Name field.
  6. If the device is an USB SAM/USB SAMDM module or Sun SAM/Sun SAMDM module, select a keyboard country layout, shown in Table on page 58, from the Layout drop-down list. For all other devices, this field is disabled.
  7. If the device is an USB SAM/USB SAMDM module or Sun SAM/Sun SAMDM module, select the emulation setting for the device from the Emulation drop-down list. For all other devices, the field is disabled.
  8. To save changes and return to the Device Admin screen, click *Apply*. To exit the OSD, click *Cancel* or *X*.

### To edit a device (seamless configuration):

1. Press **Ctrl+Ctrl** to launch the OSD.
2. Click the *Admin* tab. The Device Admin screen displays.

---

#### NOTE:

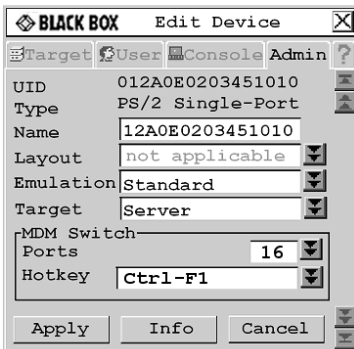
The Device Admin screen will display only the devices that are currently attached to the switching system and powered. Only the Administrator can edit device attributes.

---

3. From the drop-down list, select the device you wish to edit.
4. Click the *Edit Device* button. The Edit Device screen displays.
5. Type a new name (1-15 characters) for the device in the Name field.  
From the Target drop-down list, select the cascaded Black Box KVM switch to which the Octet server access module is attached.

- or -

Select *KVM Switch* if the cascaded switch is a non-Black Box switch.



**Figure 4-27. Edit Device Screen (Seamless Configuration)**

6. In the MDM Switch area, select the number of ports on the cascaded KVM switch from the Ports drop-down list.
7. In the MDM Switch area, select the hotkey sequence of the cascaded KVM switch from the Hotkey drop-down list.

8. To save changes, click *Apply* save changes. The Octet server access module briefly disappears from the list, then reappears with the MDM target devices that represent each port on the cascaded switch.
9. Repeat steps 3-5 to rename each MDM target device. Click *Apply* for each MDM target device on the list.
10. (Optional) Edit additional MDM Octet server access modules by repeating steps 3-10.
11. Click *Close* or *X* to exit the OSD.

## 4.9 OSD Command Line Operations

The OSD Command Line allows you to enter commands to administer the Octet switching system.

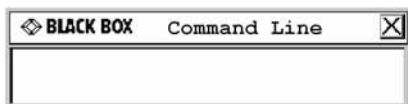


Figure 4-28. Command Line Screen

### Accessing the Command Line

The following table provides a list of hotkey sequences used to activate the Command Line. The default Command Line hotkey sequence is the **NumLock** key pressed and held, followed by the **Minus (-)** key. You can set the following hotkey sequences from the list available on the Console tab.

### OSD Command Line Hotkey Sequences

| Sequence      | Keystroke Description   |
|---------------|---|
| NumLock + “-” | <b>NumLock</b> key, pressed and held, followed by the <b>Minus (-)</b> key    |
| NumLock + “/” | <b>NumLock</b> key, pressed and held, followed by the <b>Slash (/)</b> key    |
| NumLock + “+” | <b>NumLock</b> key, pressed and held, followed by the <b>Plus (+)</b> key     |
| NumLock + “*” | <b>NumLock</b> key, pressed and held, followed by the <b>Asterisk (*)</b> key |

### To change the OSD command line sequence:

1. Press **Ctrl+Ctrl** to launch the OSD.
2. Click the *Console* tab, then click the down arrow button to display the Configure screen.



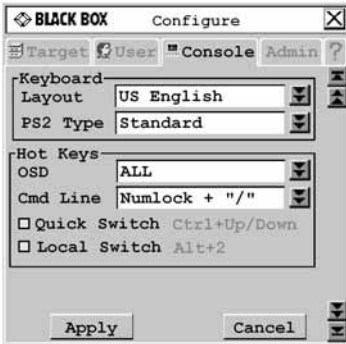


Figure 4-29. Configure Screen

3. Click the Cmd Line drop-down menu and select a command line.
4. To save changes, click *Apply*. The selected sequence changes from black to blue text. To exit the OSD, click *Cancel* or *X*.

## Resetting the keyboard and mouse

Should you lose keyboard and mouse connectivity, you can use the Command Line to quickly restore default settings for the keyboard and mouse attached to the user station you are currently logged in to.

### To reset the keyboard and mouse:

1. Press the default Command Line hotkey sequence to display the Command Line.
2. Type **rk** and press **Enter** to reset the keyboard.  
- or -  
Type **rm** and press **Enter** to reset the mouse.

## Disabling Auto User Login

Auto User Login at the user station can only be enabled by the Administrator, but it can be disabled by any user.

### To disable auto user login:

1. Press the default Command Line hotkey sequence to display the Command Line.
2. Type **disable auto user login** and press **Enter**.

See *Locking user station settings* on page 65 for more information about Auto User Login settings.

## Equalization tuning

To adjust the video quality of the monitor connected to your user station, you may manually tune the equalization values that are applied during video compensation.

### To edit equalization offset values:

1. Press the default Command Line hotkey sequence to display the Command Line.
2. Type **equalization tuning** and press **Enter**. The Equalization Tuning screen will be displayed.

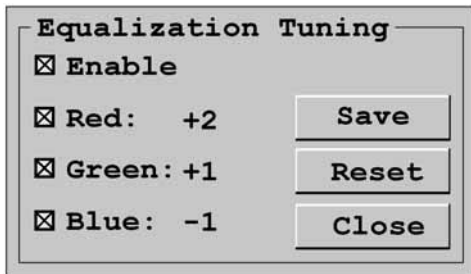


Figure 4-30. Equalization Tuning Screen

3. Select *Enable* to allow manual adjustment of equalization offset values.
4. Select the color(s) you wish to adjust. You may adjust colors individually or as a group.
5. To increase the offset value of the selected color(s) by increments of one, use the **Up** key or **Plus** key.
6. To decrease the offset value of the selected color(s) by increments of minus one, use the **Down** key or **Minus** key.
7. If you are currently connected to a target device, the offset values will be immediately applied to the video signal.
8. If you wish to save the current equalization tuning settings, click *Save*. The equalization tuning settings will be permanently stored on the user station and will be applied to the video signal each time you connect to a target device.

-or-

If you do not wish to save changes to the user station, click *Close*. The equalization tuning will apply to the video signal of the currently connected target device until the connection is closed.

-or-

If you want to reset the equalization tuning values to zero and disable equalization tuning, click *Reset*.

---

**NOTE:**

If equalization tuning is not supported on your user station, you will not be able to access the Equalization Tuning screen.

---

## Deskew tuning

To adjust the video quality of the monitor connected to your user station, you may manually adjust the deskew values that are applied during video compensation.

### To edit deskew values:

1. Press the default Command Line hotkey sequence to display the Command Line.
2. Type **deskew tuning** and press **Enter**. The DeSkew Tuning screen will be displayed.

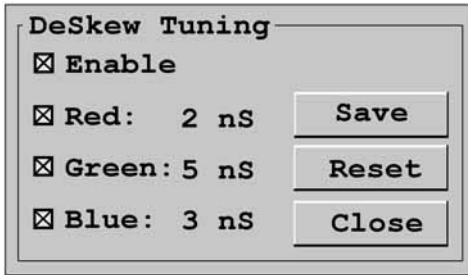


Figure 4-31. Deskew Tuning Screen

3. Select *Enable* to allow manual adjustment of deskew values.
4. Select the color(s) you wish to adjust. You may adjust colors individually or as a group.
5. To increase the deskew value of the selected color(s) by increments of one, use the **Up** key or **Plus** key.
6. To decrease the deskew value of the selected color(s) by increments of minus one, use the **Down** key or **Minus** key.
7. If you are currently connected to a target device, the deskew values will be immediately applied to the video signal.
8. If you wish to save the current deskew settings, click *Save*. The deskew settings will be permanently stored on the user station and will be applied to the video signal each time you connect to a target device.

-or-

If you do not wish to save changes to the user station, click *Close*. The deskew tuning will apply to the video signal of the currently connected target device until the connection is closed.

-or-

If you want to reset the deskew values to zero and disable deskew tuning, click *Reset*.

---

**NOTE:**

If deskew tuning is not supported on your user station, you will not be able to access the Deskew Tuning screen.

---

## Configuring the DDC table

The Display Data Channel (DDC), specified by Video Electronics Standards Association (VESA), is a communication interface between a server display, such as a monitor or Octet server access module, and a host system, such as PC or workstation. You can choose to use the default DDC table or nVidia DDC table.

---

**CAUTION:**

If you are unsure of what DDC table is needed for your system, do not change the DDC table setting. Contact your system administrator or Black Box Technical Support for more information about configuring the DDC table.

---

### To configure the DDC table:

1. Press the default Command Line hotkey sequence to display the Command Line.

2. Type **ddctable '[servername]' default** and press **Enter** to set the Octet server access module with the specified servername to use the default DDC table.
3. Type **ddctable '[servername]' nVidia** and press **Enter** to set the Octet server access module with the specified servername to use the nVidia DDC table.

**NOTE:**

The servername is the name of the Octet server access module and should be entered exactly as it displays in the target list. Single quotes are required before and after the servername. The following is an example of the command for a typical configuration DDC table: `ddctable 'Server 43' nVidia`.

## Persistent mode

The persistent mode setting allows a user station to use stored UID and connection type values to re-establish a lost connection.

### To set the persistent mode:

1. Press the default Command Line hotkey sequence to display the Command Line.
2. Type **enable persistent mode** and press **Enter** to store the UID and connection type of a target device.  
- or -  
Type **disable persistent mode** and press **Enter** to disable the persistent mode setting.

### To view the persistent mode:

1. Press the default Command Line hotkey sequence to display the Command Line.
2. Type **show persistent mode** and press **Enter** to display the current persistent mode setting. If the persistent mode is enabled, the current stored UID and connection type settings are also displayed.

## 4.10 Forcing a Connection to a Target Device

From the user station, you can force any user station in the switching system to connect to a target device. The host user station sends force connect and disconnect commands. When using Serial Force mode, the host user station must be connected to the serial device. The target user station receives the command and force connects to or disconnects from a target device. Any user station in the switching system, including the host, may act as the target user station.

You can force a connection using any of the following methods:

- Forcing a connection using the Command Line
- Forcing a connection using Serial Force mode
- Forcing a connection using SNMP

### Guidelines

**NOTE:**

The following guidelines do not apply when forcing a connection using SNMP.

All forced connections are done in Shared mode. For optimum operation of the force connection feature, observe the following guidelines:

- Both the user entering the command and the user at the target user station must have rights to the target device.

- All user stations and Octet server access modules must have unique names.
- If the host and target user stations are connected to different Octet switches, the Octet switching system must be synchronized using the Octeware software.
- (Serial Force mode only) To prevent the host user station from automatically logging out, the Inactivity Timer Disconnect function must be disabled. See *User station inactivity settings* on page 66 for more information.
- (Serial Force mode only) If Force User Login is enabled, a user must be logged in. See *Administering security settings* on page 56 for more information.

### Force connect and force disconnect commands

The force connect and force disconnect commands contain two user-defined variables: the [TargetUserStationName] and the [servername]. Single quotes are required before and after each variable. The following is an example of a force connect command: **fc 'User Station 3' 'Server 43'**.

- [TargetUserStationName] - the name of the user station that you wish to connect to or disconnect from the target device.
- To determine the name of the user station, launch the OSD and click the ? tab. Press the **End** key to view the unit name at the bottom of the screen. When entering a force connect or disconnect command, replace [TargetUserStationName] with the unit name.
- [servername] - the name of the target device to which you wish the user station to force a connection or disconnection.
- The server name is stored on the IQ module and is displayed in the list on the Target tab of the OSD. When entering a force connect or disconnect command, replace [servername] with the appropriate target device name from the Target list.

### Forcing a connection using the OSD Command Line

#### To force a user station to make or break a connection:

1. Press the default Command Line hotkey sequence to display the Command Line. For more information see *Accessing the Command Line* on page 70.
2. Type **fc '[TargetUserStationName]' '[servername]'** and press **Enter** to force the target user station to connect to the specified target device.

-or-

Type **fd '[TargetUserStationName]'** and press **Enter** to force the target user station to disconnect from the connected target device.

### Forcing a connection from the serial port to a target device

Once Serial Force mode is enabled, a serial device attached to the host user station can send a force connect or disconnect command to that user station. The host user station will then force the target user station to either connect to or disconnect from a target device.

#### To enable Serial Force mode:

Select *Serial Force Mode* on the lockdown settings for the user station. See *Locking user station settings* on page 65 for more information.

-or-

Enter **enable serial force mode** at the Command Line. See *OSD Command Line Operations* on page 70 for more information.

## Serial parameters

Once Serial Force mode is enabled, the serial port parameters are set to:

- 9600 baud
- 8 data bits
- no parity
- 1 stop bit
- no flow control

These parameters cannot be changed. The serial configuration settings of the serial device attached to the host user station must match these parameters.

### To disable Serial Force mode:

Deselect *Serial Force Mode* on the lockdown settings for the user station. See *Locking user station settings* on page 65 for more information.

-or-

Enter **disable serial force mode** at the Command Line. See *OSD Command Line Operations* on page 70 for more information.

Once disabled, the serial baud rate will be changed to 57600. The serial emulation will change to the current value for the user's settings.

### To force a user station to make a connection:

1. Make sure that the serial device is configured appropriately. See *Serial parameters* on page 76 for more information.
2. From the attached serial device, send an **fc** '**[TargetUserStationName]**' '**[servername]**' command to the host user station followed by a carriage return character **[0x0D]**. This will force the target user station to connect to the specified target device.

-or-

From the attached serial device, send an **fcc** '**[TargetUserStationName]**' '**[servername]**' command to the host user station followed by a carriage return character **[0x0D]**. This will force the target user station to connect to the specified target device. In addition, the user station will send a numeric confirmation code indicating the outcome of the command. See Table for code definitions.

### To force a user station to break a connection:

1. Make sure that the serial device is configured appropriately. See *Serial parameters* on page 76 for more information.
2. From the attached serial device, send an **fd** '**[TargetUserStationName]**' command to the host user station followed by a carriage return character **[0x0D]**. This will force the target user station to disconnect from the target device.

-or-

From the attached serial device, send an **fdc** '**[TargetUserStationName]**' command to the host user station followed by a carriage return character **[0x0D]**. This will force the target user station to disconnect from the specified target device. In addition, the user station will send a numeric confirmation code indicating the outcome of the command. See Table for code definitions.

## Confirmation codes

If you use the `fcc` or `fdc` commands, you will receive a numeric confirmation code indicating the outcome of the command. See Table and Table for confirmation codes and corresponding definitions.

### Force Connect Confirmation Codes

| Code | Definition   |
|------|--|
| 0    | The command was valid. The target device was found and the user has connection rights to that target device. |
| 1    | Invalid syntax. The command was not entered correctly.   |
| 2    | The specified target device was not found.   |
| 3    | The user does not have connection rights to the specified target device.                                     |
| 4    | An invalid command was entered.  |

### Force Disconnect Confirmation Codes

| Code | Definition   |
|------|--|
| 0    | The command was valid. The connection to the target device was terminated. |
| 1    | Invalid syntax. The command was not entered correctly.                     |
| 4    | An invalid command was entered.  |

## Forcing a connection using SNMP

To force a connection using SNMP, the access rights that apply to SNMP control are assigned to a user named “snmpUser.” After adding and setting access rights for the `snmpUser`, you can force a switch to any of the target devices to which the `snmpUser` has access.

For instructions on adding an SNMP user, see the Octoware software online help program. For more information on forcing an external switch on the Octet switch, refer to the specific MIB file called AMX-MIB. This MIB file is available on the Octoware software CD. You can also download the AMX-MIB file by visiting [www.blackbox.com](http://www.blackbox.com) and clicking *Product Upgrades*.





## 5. Terminal Operations

### 5.1 Accessing the Terminal Menu

You can configure an Octet switch at the unit level through the Terminal port. All terminal commands are accessed through a terminal or PC running terminal emulation software.

#### To access the Terminal Applications menu:

Connect a terminal or PC running terminal emulation software (such as HyperTerminal) to the configuration port on the Octet switch using the supplied null modem cable. The terminal should be set to:

- 9600 baud
- 8 bits
- 1 stop bit
- no parity
- no flow control

The terminal may be connected at any time, even when the unit is powered.

The first time you access the switch, you are prompted to enter a username. Enter the username **admin** and press **Enter**. Once you have access to the Octet switch terminal applications menu, you can configure a password for the serial port should you wish to do so.

#### Terminal Applications menu commands

The Octet switch Terminal Applications menu features five selections: Network Configuration, System Management, Set/Change Password, SNMP Configuration and Exit.

#### Network Configuration

The Octet switch is configured for network access through this option. Selecting this option provides you access to the addressing that positions the Octet switch in your network.

---

**NOTE:**

Both the Octaware software and the Octet switch must be on the same subnet in class A, B or C to function properly.

---

#### System Management

The Octet switch uses IP to communicate with the Octaware software and synchronize all Octet switch databases. You can provide a unique ID for each Octet switching system configuration so that multiple configurations can be connected to and managed on the same subnet.

All Octet switches that are part of the same Octet configuration should have the same configuration ID.

Set the IDs of all Octet switching system configurations that will be connected to the same subnet as shown in the following table. Continue this numbering system for all other Octet switching system configurations connected to the same subnet.

### Octet Switching System Configuration ID

| System   | Configuration ID |
|----------|------------------|
| system 1 | 000001           |
| system 2 | 000002           |
| system 3 | 000003           |

### Set/Change Password

You can set the Octet switch to a secure mode so that the Terminal Applications menu cannot be accessed without first entering a password.

#### To activate security:

1. Select the *Set/Change Password* menu option. You will be prompted to decide if you wish to continue. Enter a **Y**.
2. Type a password for this Octet switch and press **Enter**. This password can be up to eight characters long.
3. You will be prompted to re-type the password. After completing this step, security will be active and you will not be able to access Octet switch terminal operations without the password.

#### To change the password:

Select the *Set/Change Password* menu option. You will be prompted to type the old password and a new one. Re-enter the new password to verify.

---

#### CAUTION:

This password places your Octet switch terminal in a secure mode. This password should be guarded like any network password and care should be taken to avoid forgetting or misplacing it. This password cannot be reset or recovered if lost or forgotten. Should you lose your password, please contact Black Box Technical Support for assistance.

---

### SNMP Configuration

The SNMP Configuration option on the Terminal Applications menu enables you to specify the following parameters for SNMP processing:

- Enabling and disabling SNMP
- Defining read, write and trap community names
- Defining and deleting up to four trap destination IP addresses
- Enabling and disabling SNMP traps

---

#### NOTE:

"Trap" refers to a trap command used by manual devices to report events to the Network Management System (NMS).

---

**To configure SNMP processing:**

1. On the Serial Console Main Menu, press **4** to select SNMP Configuration. The SNMP Configuration Menu displays.
2. Press **1** and **Enter** to toggle the SNMP mode from Disabled to Enabled.
3. Press **2** and **Enter** to specify the community to which traps will be read. Enter the community name and **Enter**.
4. Press **3** and **Enter** to specify the community name to which traps will be written. Enter the community name and press **Enter**.
5. Press **4** and **Enter** to specify the trap community name. Enter the trap community name and press **Enter**.

**NOTE:**

The read, write and trap community names must match those used by the SNMP Browser/Trap Logger.

6. Press **5, 6, 7, 8** and **Enter** to specify each trap IP address of up to four trap hosts to which you want to send SNMP traps. Type each trap IP address and press **Enter**.

**NOTE:**

The trap destination address must take the format of a decimal IP address as follows: xxx.xxx.xxx.xxx

7. Press **9** and **Enter** to display the SNMP Trap Configuration Menu. Press the number of each SNMP trap you wish to enable or disable and **Enter**.
8. Press **0** and **Enter** to apply and store all changes.

- or -

Press **x** and **Enter** to restore settings as they were before changes were made.

See *Users* on page 37 and *Forcing a connection using SNMP* on page 62 for information on adding an SNMP user and assigning rights to the SNMP user.

**Managing Octet switch objects with SNMP**

Using SNMP, you can monitor and manage MIB (Management Information Base) objects specific to the Octet switch. Refer to Table for a description of the Octet system MIB object groups.

**Octet System MIB Object Groups**

| Object Group   | Purpose  |
|----------------|--|
| amxApliance    | Provides general information about the Octet switch, including firmware and hardware revisions |
| amxAmiq        | Provides a list of available Octet server access modules from the Octet switch                 |
| amxUserStation | Provides a list of user stations connected to the Octet switch                                 |
| amxStats       | Provides statistics on packets for each port (only available internally)                       |
| amxSnmp        | Provides information on SNMP settings  |

Load the AMX-MIB file into your SNMP browser to start monitoring and managing Octet switch-specific objects. Once you have enabled the sending of traps on the Octet switch, these traps can be interpreted by the SNMP trap listener by using the trap-specific MIB files. The following table describes the MIB files required for the SNMP processing.

### **Octet System MIB Trap Files**

| <b>Trap File</b> | <b>Purpose</b>  |
|------------------|---|
| AMX-MIB          | Used by the SNMP Browser/Manager to monitor/manage the Octet switch |
| AMX5000-TRAP-MIB | SNMP traps for the KV1701A/E switch                                 |
| AMX5010-TRAP-MIB | SNMP traps for the KV1702A/E switch                                 |
| AMX5020-TRAP-MIB | SNMP traps for the KV1700A/E switch                                 |
| AMX5030-TRAP-MIB | SNMP traps for the KV1703A/E switch                                 |

### **Exit**

This menu selection will return you to the ready prompt.

## 6. Using Serial SAMs

The Serial SAM is a serial-to-VGA converter which permits VT100-capable devices to be viewed from the KV171xA user station. The actual serial data is not accessed, but is merely displayed. All serial data coming from the target device is displayed in a VT100 window, placed into a video buffer and sent to the KV171xA user station as though it came from a VGA target device. Likewise, keystrokes entered on a keyboard are sent to the attached device as though they were typed on a VT100 terminal.

### Serial SAM modes

The following modes can be accessed from the Serial SAM:

- **On-Line:** This mode enables you to send and receive serial data.
- **History:** This mode enables you to review serial data.
- **Configuration:** This mode enables you to specify communication parameters, the appearance of the serial data, key combinations for specific actions and macros.

### Configuring the Serial SAM

---

**NOTE:**

The Serial SAM is a DCE device and only supports VT100 terminal emulation.

---

Pressing **Ctrl-F8** will activate the Configuration Screen, which contains menu items that allow you to configure your Serial SAM.

---

**NOTE:**

When the Configuration Screen is active, pressing **Enter** saves changes and returns you to the previous screen. Pressing **Esc** returns you to the previous screen without saving changes.

---

Within the Configuration Screen, you can modify the following options:

- **Baud Rate:** This option allows you to specify the serial port communications speed in bauds per second (BPS). Available options are 300, 1200, 2400, 9600, 19200, 34800, 57600 or 115200. The default value is 9600.
- **Parity:** This option allows you to specify the serial port communications parity. Available options are EVEN, ODD or NONE. The default value is NONE.
- **Flow Control:** This option allows you to specify the type of serial flow control. Available options are NONE, XOn/XOff (software) and RTS/CTS (hardware). The default value is NONE. If you select a Baud Rate of 115200, the only available Flow Control is RTS/CTS (hardware).
- **DSR/CD Mode:** This option allows you to control the Data Set Ready/Carrier Detect line on your serial interface. Available options are Always on and Toggle. The default value is Always on.
- **Enter Sends:** This option enables you to specify the keys that are transmitted when **Enter** is pressed. Available options are <CR> (Enter) or <CR><LF> (Enter - Linefeed).
- **Received:** This option enables you to specify how the module translates a received **Enter** character. Available options are <CR> (Enter) or <CR><LF> (Enter - Linefeed).

- **Background:** This option changes the screen's background color. The currently-selected color displays in the option line as it is changed. Available colors are Black, Grey, Light Grey, White, Yellow, Green, Teal, Cyan, Blue, Dark Blue, Purple, Pink, Orange Red, Maroon and Brown. The default color is Black. This value cannot be identical to the Normal Text or Bold Text value.
- **Normal Text:** This option changes the screen's normal text color. The currently-selected color displays in the option line as it is changed. Available colors are Black, Grey, Light Grey, White, Yellow, Green, Teal, Cyan, Blue, Dark Blue, Purple, Pink, Orange Red, Maroon and Brown. The default color is Grey. This value cannot be identical to the Bold Text or Background value.
- **Bold Text:** This option changes the screen's bold text color. The currently-selected color displays in the option line as it is changed. Available colors are Black, Grey, Light Grey, White, Yellow, Green, Teal, Cyan, Blue, Dark Blue, Purple, Pink, Orange Red, Maroon and Brown. The default color is White. This value cannot be identical to the Normal Text or Background value.
- **Screen Size:** This option allows you to specify the screen's text width size. Available values are widths of 80 columns or 132 columns. The length for both widths is 26 lines.

The following Configuration Screen options enable you to define the function keys that will perform a selected action. To specify a new function key, press and hold the **Ctrl** key, then press the function key that you want to associate with the action. For example, if you want to change the Configuration (Config) Key Sequences option from <CTRL-F8> to <CTRL-F7>, press and hold the **Ctrl** key and then press **F7**.

- **Config Key Sequences:** This option allows you to define the key combination that causes the Configuration Screen to appear.
- **On-Line Key Sequence:** This option allows you to define the key sequence that displays the On-Line mode. The default key sequence is **Ctrl-F10**.
- **Help Key Sequence:** This option allows you to define the key combination that displays the Help System screen. The default key sequence is **Ctrl-F1**.
- **History Key Sequence:** This option allows you to define the key combination that enables History mode. The default key sequence is **Ctrl-F9**.
- **Clear History Key Sequence:** This option allows you to define the key combination that clears the history buffer while in History mode. The default key sequence is **Ctrl-F11**.
- **Break Key Sequence:** This option allows you to configure the key combination that generates a break condition. The default key sequence is **Alt-B**.

### To configure an Serial SAM:

1. Press **Ctrl-F8**. The Configuration Screen will appear.
2. Select a parameter to change. You can navigate the Configuration Screen using the **Up Arrow** and **Down Arrow** keys.
3. Modify the selected value using the **Left Arrow** and **Right Arrow** keys.
4. Repeat steps 2 and 3 to modify additional values.

5. Press **Enter** to save your changes and exit the Configuration Screen.  
- or -  
Press **Esc** to exit the Configuration Screen without saving the changes.

## Creating an Serial SAM macro

Pressing the Page Down key when the Configuration Screen is displayed will provide access to the Macro Configuration screen. The Serial SAM can be configured with up to 10 macros. Each macro can be up to 128 characters in length.

### To create a macro:

1. Select the Serial SAM you wish to configure and press **Ctrl-F8** to activate the Configuration Screen.
2. When the Configuration Screen appears, press **Page Down** to view the Macro Configuration screen. The Macro Configuration screen shows the 10 available macros and the associated key sequences, if any, for each.
3. Using the **Up Arrow** and **Down Arrow** keys, scroll to an available macro number and highlight the listed keystroke sequence. Type the new macro keystroke sequence over the default. Any combination of **Ctrl** or **Alt** and a single key may be used. When you have finished entering the keystroke sequence that will activate the new macro, press the **Down Arrow** key.
4. On the line below the macro keystroke sequence you just entered, type the keystroke sequence that you wish the macro to perform.
5. Repeat steps 3 and 4 to configure additional macros.
6. When finished, press **Enter** to save your changes and exit the Macro Configuration screen.  
- or -  
Press **Esc** to exit the Macro Configuration screen without saving the changes.

## Using History mode

History mode allows you to examine the contents of the history buffer, which contains the events that have occurred.

The Serial SAM maintains a buffer containing 240 lines minimum, or 10 screens, of output. When the history buffer is full, it will add new lines at the bottom of the buffer and delete the oldest lines at the top of the buffer.

---

### NOTE:

The Config Key Sequence, On-Line Key Sequence and Clear History Key Sequence used in the following procedure are the default values. These key combinations can be changed using the Configuration Screen.

---

**To use History mode:**

1. Press **Ctrl-F9**. The mode will display as History.
2. Press each key to perform the action described in the following table.

**History Mode Control Keys**

| History Mode | Action   |
|--------------|--|
| Home         | Move to the top of the buffer.   |
| End          | Move to the bottom of the buffer.  |
| Page Up      | Move up one buffer page.   |
| Page Down    | Move down one buffer page.   |
| Up Arrow     | Move up one buffer line.   |
| Down Arrow   | Move down one buffer line.   |
| CTRL-F       | Enters Configuration mode. The Configuration Screen will display. Press <b>Ctrl-F9</b> to return to the previous screen with History mode enabled or <b>Ctrl-F10</b> to return to the previous screen with On-Line mode enabled. |
| CTRL-F11     | Clears the history buffer. If you choose this option, a warning screen will appear. Press <b>Enter</b> to delete the history buffer or <b>Esc</b> to cancel the action. The previous screen will redisplay.                      |

3. When finished, press **Ctrl-F10** to exit History mode and return to On-Line mode.

**Serial SAM pinouts**

The Serial SAM pinouts are provided in the following table.

**Serial SAM Pinouts**

| DB9-F | Host Signal Name/Description | Signal Flow | SRL Signal Name/Description |
|-------|------------------------------|-------------|-----------------------------|
| 1     | DCD- Data Carrier Detect     | Out of SRL  | DTR - Data Terminal Ready   |
| 2     | RXD - Receive Data           | Out of SRL  | TXD - Transmit Data         |
| 3     | TXD - Transmit Data          | In to SRL   | RXD - Receive Data          |
| 4     | DTR - Data Terminal Ready    | In to SRL   | DSR - Data Set Ready        |
| 5     | GND - Signal Ground          | N/A         | GND - Signal Ground         |
| 6     | DSR - Data Set Ready         | Out of SRL  | DTR - Data Terminal Ready   |
| 7     | RTS - Request to Send        | In to SRL   | CTS - Clear to Send         |



**Serial SAM Pinouts (Continued)**

| DB9-F | Host Signal Name/Description | Signal Flow | SRL Signal Name/Description |
|-------|------------------------------|-------------|-----------------------------|
| 8     | CTS - Clear to Send          | Out of SRL  | RTS - Request to Send       |
| 9     | N/C - Not Connected          | N/A         | N/C - Not Connected         |

**Language support**

The Serial SAM is designed to operate correctly with all of the keyboard layouts that are selectable on the KV171xA user station. Once a keyboard layout in the OSD is selected, the Serial SAM ensures that the correct character for the key pressed is passed to the serial device. This is done automatically and does not require any intervention from the user.



## 7. Edit Device Screen Settings

### KV2016 Switch

| Edit Device Screen Settings |  |
|-----------------------------|--|
| Target                      | KV2016 switch  |
| Ports                       | 16   |
| Hotkeys                     | The <b>Print Screen</b> key is not operational for a server connection   |
| Unit Settings               | Required: Setting the display order of the server list to "Port" Recommended: Setting the OSD screen display time to 2 seconds |

### KV121 Switch

| Edit Device Screen Settings |  |
|-----------------------------|--|
| Target                      | KV121 switch   |
| Ports                       | 16   |
| Hotkeys                     | The <b>Print Screen</b> key is not operational for a server connection   |
| Unit Settings               | Required: Setting the display order of the server list to "Port" Recommended: Setting the OSD screen display time to 2 seconds |

### KV120 Switch

| Edit Device Screen Settings |   |
|-----------------------------|---|
| Target                      | KV120 switch  |
| Ports                       | 16  |
| Hotkeys                     | NumLock + "-", NumLock + "**", NumLock + "!",<br>NumLock + "+",<br>Ctrl + "~" |

## KVM Switch

### Edit Device Screen Settings

|         |   |
|---------|---|
| Target  | KVM switch  |
| Ports   | 1, 2, 4, 8, 12, 16, 20, 24, 28, 32  |
| Hotkeys | Ctrl–Ctrl (L), Ctrl–Ctrl (R), Ctrl–Ctrl (L-R)<br>Alt–Alt (L), Alt–Alt (R), Alt–Alt (L-R)<br>Shift–Shift (L), Shift–Shift (R), Shift–Shift (L-R)<br>Print Screen<br>Scroll, Scroll–Scroll<br>NumLock–NumLock<br>NumLock + “-”, NumLock + “*”, NumLock + “/”,<br>NumLock + “+”,<br>Ctrl + “~” |

## 8. Troubleshooting

### 8.1 Troubleshooting Tips

#### One or two colors are missing on a server or a user station

- Check the VGA connection between the user station and the monitor.
- Check the VGA connection between the Octet server access module and the server.
- Connect the monitor directly to a server to determine if the video card is causing the fault.
- If the video quality is poor on all servers from one user station, replace the UTP cable connecting the user station and the switch.
- Swap ports on the switch to determine if there is a port failure.
- To determine if there is hardware failure, complete one of the following steps: 1) If the colors are missing on a server, swap the Octet server access module; or 2) If the colors are missing on a user station, swap the user station.

#### Video does not display after connection is made to a server

- Make sure that the monitor is compatible with resolution settings on the server.
- The server may be in sleep mode. Use the keyboard or mouse to restore normal operating mode.

#### Video quality is poor; colors are missing or too bright

- Make sure the monitor is connected to the user station using a UTP cable and that the VGA connector is inserted correctly. Other cables, such as STP cables, may cause poor video quality when used at distances over 400 feet.
- If poor video quality is random, test the cables between tiers of Octet switches.

#### Switches cannot be made; “Connection timeout” error message displays

- If any of the green LEDs on the front of the Octet switch are flashing, make sure the IQ modules are connected to the server ports and that the user stations are connected to the user ports. See Figure 2.4 on page 11 for more information about the location of each ports.
- Make sure that cables between cascaded Octet switches are connected to the correct ports. In a cascaded switching system, UTP cable is connected from the server ports on the primary switch to the user ports on the secondary switches. This process may be repeated to add a tertiary level of switches. Make sure that no switch has a user port connected back into one of its own server ports. See *Installing a Cascaded Octet Switching System* on page 35 for more information.
- If any of the green LEDs are still flashing, use the Octoware software to Flash upgrade the corresponding Octet server access module. See the Octoware software online help for more information.
- If the Connection timeout error message still displays, power cycle the Octet switch and start again.

#### The console port on the Octet switch has locked up

- Check the terminal emulation software settings to ensure accuracy.

- Restart terminal emulation software and start again.
- Power cycle the Octet switch and start again.

## The OSD does not display unless a switch is made

Ensure that the monitor supports the 640 x 480 default resolution of the OSD. If this resolution is not supported, access the command line and type **set def res 1** to change the default resolution to 1024 x 768.

## 8.2 Calling Black Box

If you determine that your ServSwitch Octet is malfunctioning, do not attempt to alter or repair the unit. It contains no user-serviceable parts. Refer to the table on the following page for Black Box Technical Support Information:

Before contacting Black Box Technical Support, make a record of the history of the problem. We will be able to provide more efficient and accurate assistance if you have a complete description, including:

- the nature and duration of the problem;
- when the problem occurs;
- the components involved in the problem;
- any particular application that, when used, appears to create the problem or make it worse; and
- the results of any testing you've already done.

## 8.3 Shipping and Packaging

If you need to transport or ship your ServSwitch Octet:

- Package it carefully. We recommend that you use the original container.
- If you are shipping the ServSwitch Octet for repair, make sure you include its power cord and the cables you are using with it. If you are returning the ServSwitch Wireless Extender, make sure you include everything you received with it. Before you ship, contact Black Box to get a Return Authorization (RA) number.

## Black Box Technical Support

| Country     | Web Site/E-Mail  | Phone             | Fax               |
|-------------|--|-------------------|-------------------|
| US          | www.blackbox.com<br>info@blackbox.com  | 724-746-5500      | 724-746-0746      |
| Austria     | www.black-box.at<br>support@black-box.at   | +43 1 256 98 56   | +43 1 256 98 56   |
| Belgium     | www.blackbox.be<br>support.nederlands@blackbox.be<br>support.french@blackbox.be<br>support.english@blackbox.be | +32 2 725 85 50   | +32 2 725 92 12   |
| Denmark     | www.blackbox.dk<br>blackbox@blackbox.dk  | +45 56 63 30 10   | +45 56 65 08 05   |
| Finland     | www.blackbox.fi<br>tuki@blackbox.fi  | +358 201 888 800  | +358 201 888 808  |
| France      | www.blackbox.fr<br>tech@blackbox.fr  | +33 820 07 09 11  | +33 820 05 07 09  |
| Germany     | www.black-box.de<br>techsupp@black-box.de  | +49 811 5541 110  | +49 811 5541 499  |
| Ireland     | www.blackbox.co.uk<br>techhelp@blackbox.co.uk  | +353 1 662 2466   | +353 1 662 2477   |
| Italy       | www.blackbox.it<br>supporto.tecnico@blackbox.it  | +39 02 27 404 700 | +39 02 27 400 219 |
| Netherlands | www.blackbox.nl<br>techsupport@blackbox.nl   | +31 30 241 7799   | +31 30 241 4746   |
| Norway      | www.blackboxnorge.no<br>support@blackboxnorge.no   | +47 55 300 710    | +47 55 300 701    |
| Spain       | www.blackbox.es<br>tecnico@blackbox.es   | +34 916590732     | +34 916239784     |
| Sweden      | www.blackboxab.se<br>support@blackboxab.se   | +46 8 44 55 890   | +46 08 38 04 30   |
| Switzerland | www.black-box.ch<br>support@black-box.ch   | +41 55 451 70 71  | +41 55 451 70 75  |
| UK          | www.blackbox.co.uk<br>techhelp@blackbox.co.uk  | +44 118 965 6000  | +44 118 965 6001  |













**Doc. No. 590-429-501F**

**Customer Support Information:**

For FREE Technical Support 24 hours a day, 7 days a week, call 724-746-5500 or fax 724-746-0746

Mailing address: Black Box Corporation, 1000 Park Dr., Lawrence, PA 15055-1018

World-Wide Web: [www.blackbox.com](http://www.blackbox.com) • Email: [info@blackbox.com](mailto:info@blackbox.com)

© Copyright 2005. Black Box Corporation. All rights reserved.