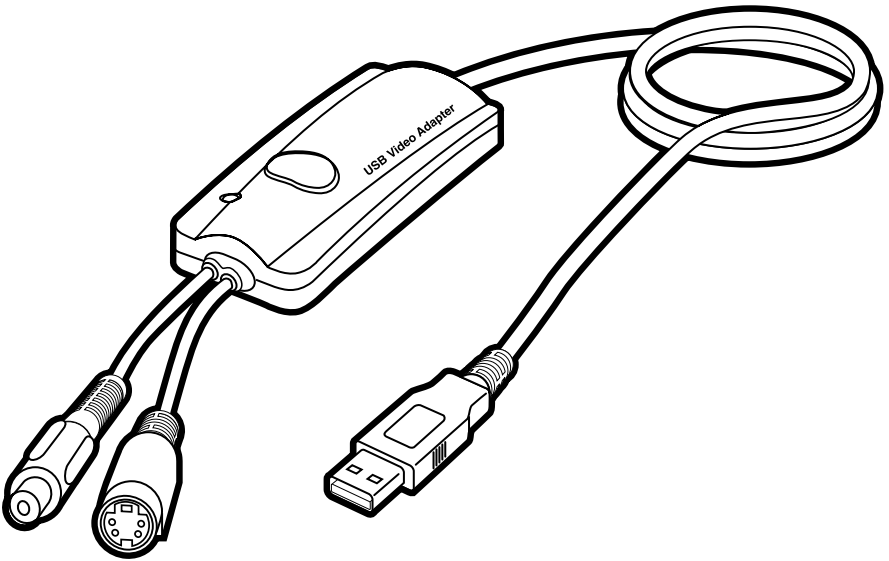




© Copyright 2000. Black Box Corporation. All rights reserved.

1000 Park Drive • Lawrence, PA 15055-1018 • 724-746-5500 • Fax 724-746-0746

USB Video Adapter



**CUSTOMER
SUPPORT
INFORMATION**

Order **toll-free** in the U.S. 24 hours, 7 A.M. Monday to midnight Friday: **877-877-BBOX**
FREE technical support, 24 hours a day, 7 days a week: Call **724-746-5500** or fax **724-746-0746**
Mail order: **Black Box Corporation**, 1000 Park Drive, Lawrence, PA 15055-1018
Web site: www.blackbox.com • E-mail: info@blackbox.com

**FEDERAL COMMUNICATIONS COMMISSION
AND
INDUSTRY CANADA
RADIO FREQUENCY INTERFERENCE STATEMENTS**

This equipment generates, uses, and can radiate radio frequency energy and if not installed and used properly, that is, in strict accordance with the manufacturer's instructions, may cause interference to radio communication. It has been tested and found to comply with the limits for a Class A computing device in accordance with the specifications in Subpart J of Part 15 of FCC rules, which are designed to provide reasonable protection against such interference when the equipment is operated in a commercial environment. Operation of this equipment in a residential area is likely to cause interference, in which case the user at his own expense will be required to take whatever measures may be necessary to correct the interference.

Changes or modifications not expressly approved by the party responsible for compliance could void the user's authority to operate the equipment.

This digital apparatus does not exceed the Class A limits for radio noise emission from digital apparatus set out in the Radio Interference Regulation of Industry Canada.

Le présent appareil numérique n'émet pas de bruits radioélectriques dépassant les limites applicables aux appareils numériques de la classe A prescrites dans le Règlement sur le brouillage radioélectrique publié par Industrie Canada.

**NORMAS OFICIALES MEXICANAS (NOM)
ELECTRICAL SAFETY STATEMENT**

INSTRUCCIONES DE SEGURIDAD

1. Todas las instrucciones de seguridad y operación deberán ser leídas antes de que el aparato eléctrico sea operado.
2. Las instrucciones de seguridad y operación deberán ser guardadas para referencia futura.
3. Todas las advertencias en el aparato eléctrico y en sus instrucciones de operación deben ser respetadas.
4. Todas las instrucciones de operación y uso deben ser seguidas.
5. El aparato eléctrico no deberá ser usado cerca del agua—por ejemplo, cerca de la tina de baño, lavabo, sótano mojado o cerca de una alberca, etc..
6. El aparato eléctrico debe ser usado únicamente con carritos o pedestales que sean recomendados por el fabricante.
7. El aparato eléctrico debe ser montado a la pared o al techo sólo como sea recomendado por el fabricante.
8. Servicio—El usuario no debe intentar dar servicio al equipo eléctrico más allá a lo descrito en las instrucciones de operación. Todo otro servicio deberá ser referido a personal de servicio calificado.
9. El aparato eléctrico debe ser situado de tal manera que su posición no interfiera su uso. La colocación del aparato eléctrico sobre una cama, sofá, alfombra o superficie similar puede bloquea la ventilación, no se debe colocar en libreros o gabinetes que impidan el flujo de aire por los orificios de ventilación.
10. El equipo eléctrico deber ser situado fuera del alcance de fuentes de calor como radiadores, registros de calor, estufas u otros aparatos (incluyendo amplificadores) que producen calor.
11. El aparato eléctrico deberá ser conectado a una fuente de poder sólo del tipo descrito en el instructivo de operación, o como se indique en el aparato.

12. Precaución debe ser tomada de tal manera que la tierra física y la polarización del equipo no sea eliminada.
13. Los cables de la fuente de poder deben ser guiados de tal manera que no sean pisados ni pellizcados por objetos colocados sobre o contra ellos, poniendo particular atención a los contactos y receptáculos donde salen del aparato.
14. El equipo eléctrico debe ser limpiado únicamente de acuerdo a las recomendaciones del fabricante.
15. En caso de existir, una antena externa deberá ser localizada lejos de las líneas de energía.
16. El cable de corriente deberá ser desconectado del cuando el equipo no sea usado por un largo periodo de tiempo.
17. Cuidado debe ser tomado de tal manera que objetos líquidos no sean derramados sobre la cubierta u orificios de ventilación.
18. Servicio por personal calificado deberá ser provisto cuando:
 - A: El cable de poder o el contacto ha sido dañado; u
 - B: Objetos han caído o líquido ha sido derramado dentro del aparato; o
 - C: El aparato ha sido expuesto a la lluvia; o
 - D: El aparato parece no operar normalmente o muestra un cambio en su desempeño; o
 - E: El aparato ha sido tirado o su cubierta ha sido dañada.

TRADEMARKS USED IN THIS MANUAL

MMX™ is a trademark and Pentium® is a registered trademark of Intel Corporation.

RCA® is a registered trademark of General Electric Co.

Windows® is a registered trademark of Microsoft Corporation.

Any other trademarks mentioned in this manual are acknowledged to be the property of the trademark owners.

Contents

1. Specifications	6
2. Introduction	7
2.1 Description	7
2.2 Features	7
2.3 What the Package Includes	7
2.4 Minimum System Requirements	7
3. Hardware Installation	9
4. Software Installation	10
5. Driver Installation	14

1. Specifications

Video Input—(1) RCA® composite, (1) S-Video

Video Output—Serial data for USB standard compliant

Video Capture Size—160 x 120, 176 x 144, 320 x 240, 352 x 288 pixels

Single-Button Snap Shot to Capture Still—Picture @ 640 x 480 pixels

Performance—30 fps @ CIF size (352 x 288 pixels); 30 fps @ QCIF size (176 x 144 pixels)

USB Data Bandwidth—8 Mbps isochronous

Indicators—(1) LED to show connectivity

Connectors—(1) USB Type A male, (1) RCA female, (1) 4-pin mini-DIN female

Power—5 VDC, 170 mA (maximum) through USB port

Size—1"H x 1.5"W x 6.1"D (2.5 x 3.8 x 15.5 cm)

Weight—1 lb. (0.5 kg)

2. Introduction

2.1 Description

The USB Video Adapter is the ideal companion for your Microsoft® Windows® 98 upgrade. It's the bridge between your PC and analog camera, VCR, camcorder, or other video source. The Adapter is small enough to fit in the palm of your hand and works well with both notebook and desktop computers. The USB Video Adapter also has a snapshot button that allows you to take high-quality still photos.

2.2 Features

- Small size
- A single snapshot button takes still photos at VGA resolution (640 x 480 pixels).
- Convert analog video signal to digital through USB RCA, S-Video analog input, NTSC, or PAL system.
- High-quality video compressor to speed up video frame rate.
- Low CPU utilization at decompression.
- Plug and play.
- Low power consumption.
- No battery required.

2.3 What the Package Includes

Your package should include the following items. If anything is missing or damaged, please call Black Box at 724-746-5500.

- USB Video Adapter.
- CD-ROM containing drivers and application software.
- This users' manual.

2.4 Minimum System Requirements

- USB-equipped computer

USB VIDEO ADAPTER

- Pentium® 166 MMX™
- 32 MB of RAM
- Windows 98 or 95 OSR2.1
- CD-ROM drive (for installing software)
- 256 color VGA display

3. Hardware Installation

To install the USB Video Adapter:

1. Locate an available USB port. The USB port is a rectangular port that can be either on the front or the back of your desktop PC, or on the back or side of your notebook or hub.
2. Insert the Type A connector on the USB Video Adapter into the USB port on your computer.

NOTE

The computer does not have to be turned off since the USB Video Adapter has hot pluggable capabilities. Therefore, it is safe to plug and unplug the USB Video Adapter when the computer is on.

3. Plug the S-Video DIN connector or the RCA jack into the camera.
4. After plugging in the USB Video Adapter, Windows checks the new device and will search for a driver. Click **Cancel**, since you will install the driver later.

4. Software Installation

1. Insert the CD into into the CD-ROM drive.
2. The Autorun function will be executed. (If not, run the CD-ROM's **setup.exe** file in the root directory.)
3. Double-click the **Mr. Photo** to install the application program.
4. Double-click on the language of your choice.
5. Double-click **setup.exe**.
6. The Welcome screen appears, as shown in **Figure 4-1**. Click **Next**.

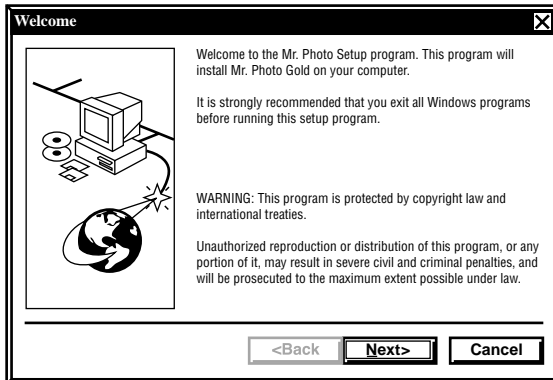


Figure 4-1. Welcome screen.

7. The Mr. Photo Gold screen appears. Click **Yes**.
8. Choose the destination location. Type the destination where you want the files to copy to, and click **Next**.

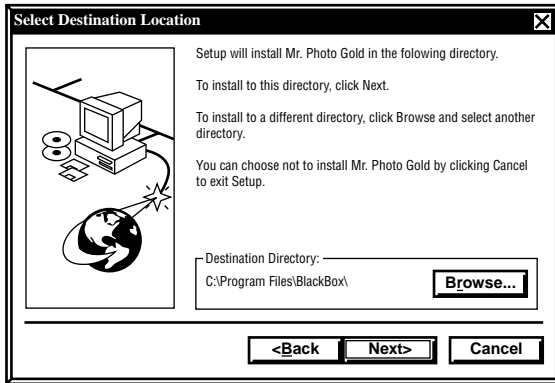


Figure 4-2. Choosing the destination location.

9. Select components, as shown in **Figure 4-3**. Choose the group name you prefer, and click **Next**.

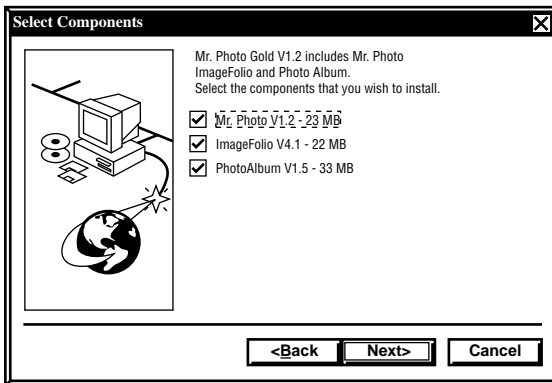


Figure 4-3. Choosing the group name.

- To select the program folder, type the name of the program folder or choose one of the existing folders and click **Next**.

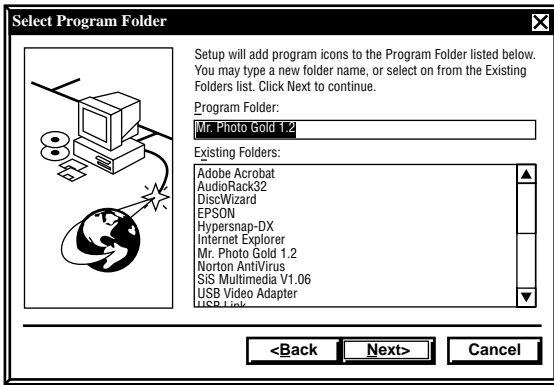


Figure 4-4. Select the program folder.

- To set the setup type, choose the type you prefer and click **Next**.

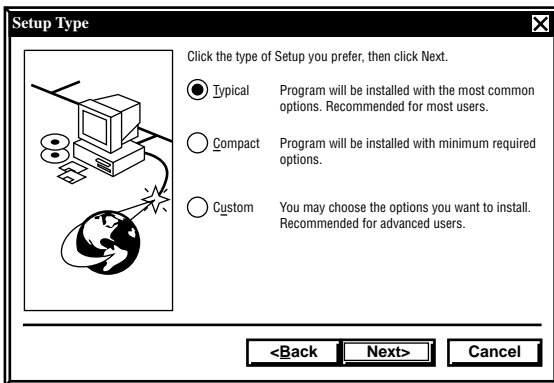


Figure 4-5. Setup type.

12. A screen appears to confirm that installation is successful.

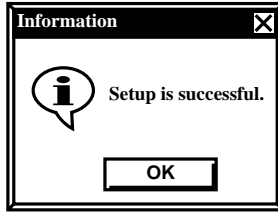


Figure 4-6. Installation successful.

13. A registration screen appears.

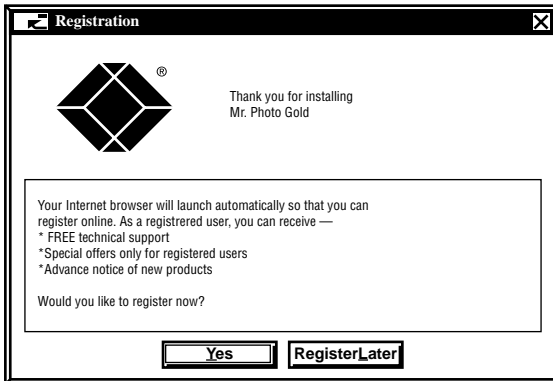


Figure 4-7. Registration screen.

5. Driver Installation

Follow these steps to install the driver.

1. Go to the CD-ROM.
2. Double-click the **USB Video Adapter Driver**.
3. Double-click **Setup.exe**.
4. The Welcome screen shown in **Figure 5-1** appears. Click **Next**.

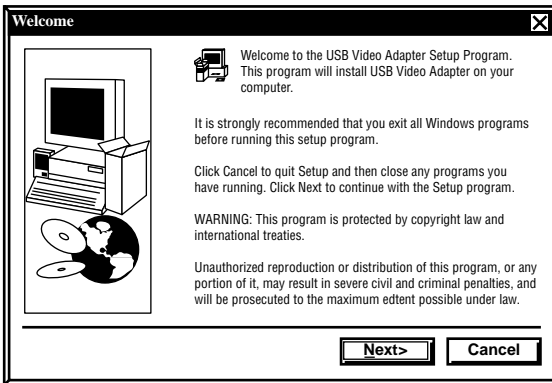


Figure 5-1. Welcome screen.

5. Choose the destination location. Type the destination where you want the files to copy to, and click **Next**.

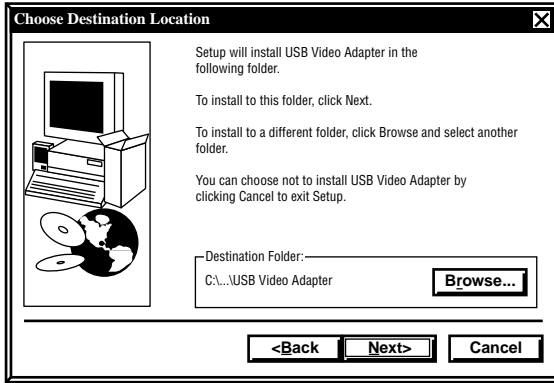


Figure 5-2. Destination location.

6. Select the program folder. Choose or type the name of the program folder and click **Next**.

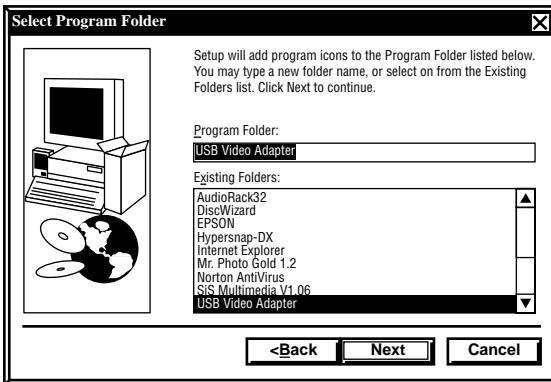


Figure 5-3. Program folder.

- When the screen shown in **Figure 5-4** appears, unplug the USB port and plug it back in again. Windows will detect it. Click **OK**.



Figure 5-4. Information screen.

- To complete the setup, when the screen shown in **Figure 5-5** appears, choose **Yes, I want to restart my computer now**, and click **Finish**.

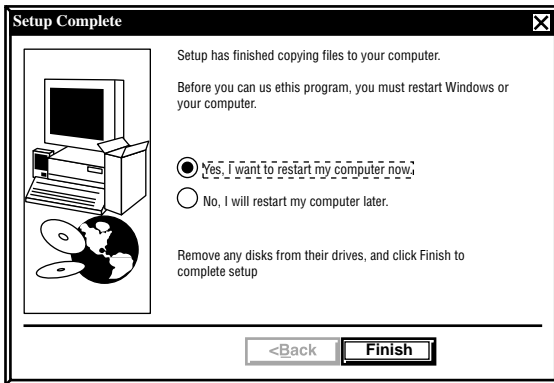


Figure 5-5. Installation finished.