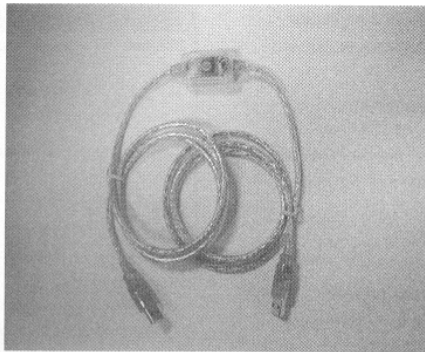




MAY 2004
IC149A-R3



Key Features -

- Full compatibility with USB 2.0 and 1.1 standards
- Host-to-Host file transfer
- Data transfer rate: up to 480 Mb/sec
- No external power and low power consumption
- Easy plug and play installation
- Sharing files and CD-ROM to another computer
- Friendly application interface
- Small size easy to portable

Specification -

- Compatibility the USB 2.0 High-Speed and Full-Speed
- Only use the USB bus power
- Cable length 1500 mm (standard), available up to 2500mm
- Support Host-to-Host file transfer
- Slim dimensions(only adapter): 45(L) X 25(W) X 20(H)mm

System Requirements -

- OS: Windows 98/SE/ME/2000/XP
- CD-ROM drive (for driver installation)
- One free USB 1.1 or USB 2.0 Port

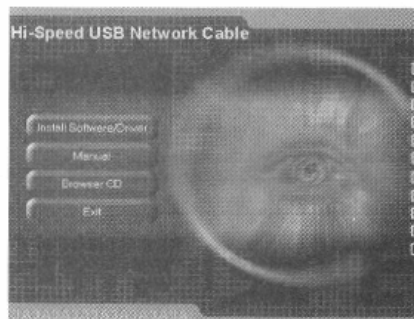
Package Contents -

- USB 2.0 Link Cable X 1
- CD-ROM (Driver/ Application / Manual) X 1

Software Installation -

- (1) Insert CD-ROM into CD-ROM driver.
- (2) Autorun function will be executed as below.

(If not, please execute CD-ROM's "autorun.exe" file in root directory.)

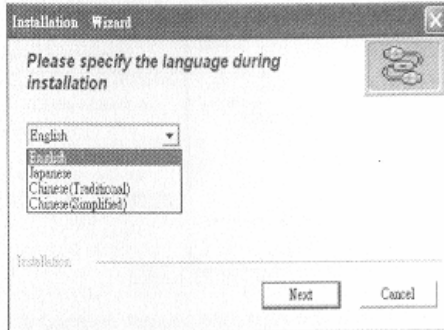


CUSTOMER SUPPORT INFORMATION

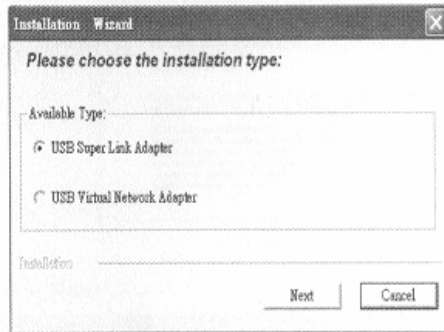
Order **toll-free** in the U.S. 24 hours, 7 A.M. Monday to midnight Friday: **877-877-BBOX**
FREE technical support, 24 hours a day, 7 days a week: Call **724-746-5500** or fax **724-746-0746**
Mail order: **Black Box Corporation**, 1000 Park Drive, Lawrence, PA 15055-1018
Web site: www.blackbox.com • E-mail: info@blackbox.com

(3) Please click "Install Driver".

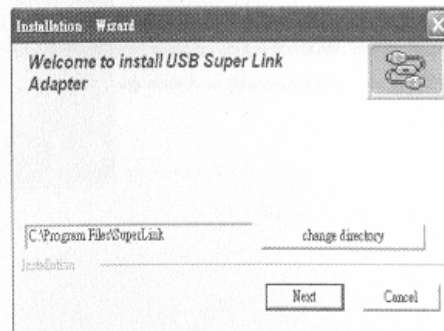
(4) Choose your language and click "Next"



(5) Choose USB SuperLink Adapter and click "Next"



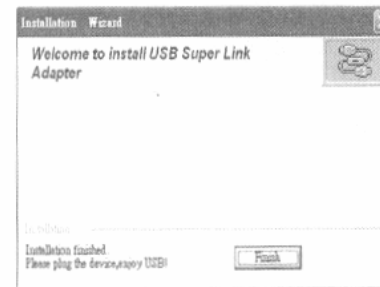
(6) Selects your directory and click "Next"



(7) Click "Continue Anyway"

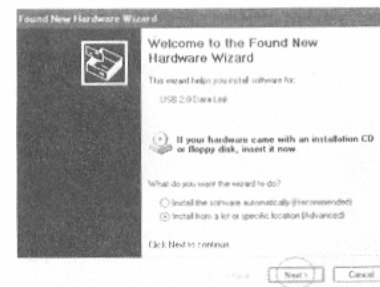


(8) Installation complete, please click "Finish"

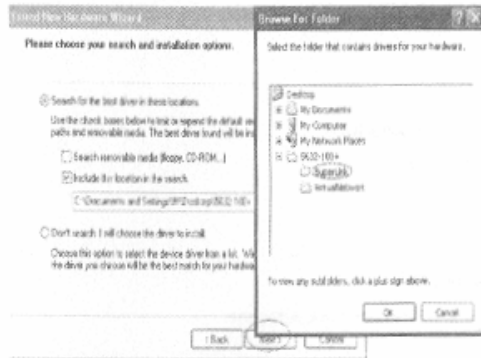


HARDWARE INSTALLATION - XP Driver Setup -

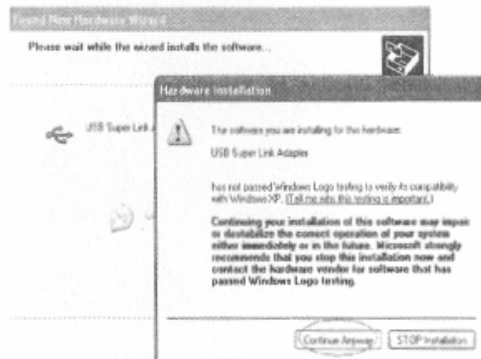
(1) Windows will install the standard USB PC-to-PC bridge driver. When the Found New Hardware Wizard opens, Select the option to **Install from a list or specific location(Advanced)** and then click "Next".



(2) Browse driver locations and then click "Next".



(3) Click Continue Anyway in the following window.



(4) Click "Finish".



To confirm if USB 2.0 Link Cable hardware is installed properly -

1. For Win98 / SE / ME Users:

You can check to the Control Panel / System / Device Manager / Universal Serial Bus controllers/USB Super Link Adapter

2. For Win 2000 / XP Users:

You can check to the Control Panel / System / Hardware / Device Manager / Universal Serial Bus controllers/USB Super Link Adapter