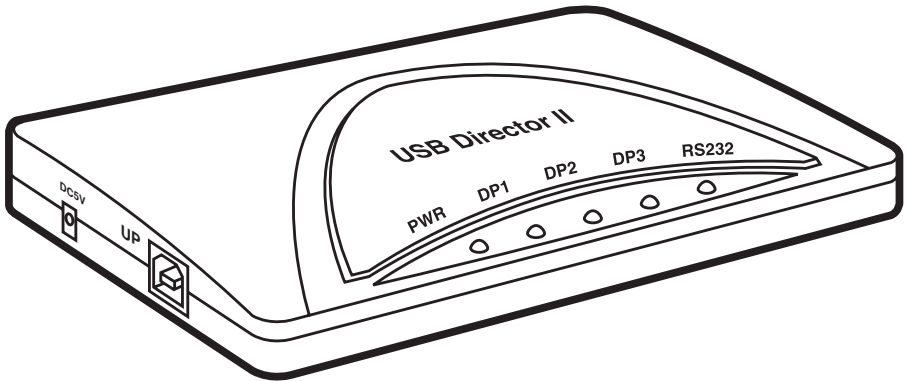


USB Director II



**CUSTOMER
SUPPORT
INFORMATION**

Order **toll-free** in the U.S.: Call **877-877-BBOX** (outside U.S. call **724-746-5500**)
FREE technical support 24 hours a day, 7 days a week: Call **724-746-5500** or fax **724-746-0746**
Mailing address: **Black Box Corporation**, 1000 Park Drive, Lawrence, PA 15055-1018
Web site: www.blackbox.com • E-mail: info@blackbox.com

FEDERAL COMMUNICATIONS COMMISSION
and CANADIAN DEPARTMENT OF COMMUNICATIONS

RADIO FREQUENCY INTERFERENCE STATEMENT

Class B Digital Device. This equipment has been tested and found to comply with the limits for a Class B computing device pursuant to Part 15 of the FCC Rules. These limits are designed to provide reasonable protection against harmful interference in a residential installation. However, there is no guarantee that interference will not occur in a particular installation. This equipment generates, uses, and can radiate radio frequency energy, and, if not installed and used in accordance with the instructions, may cause harmful interference to radio communications. If this equipment does cause harmful interference to radio or telephone reception, which can be determined by turning the equipment off and on, the user is encouraged to try to correct the interference by one of the following measures:

- Reorient or relocate the receiving antenna.
- Increase the separation between the equipment and receiver.
- Connect the equipment into an outlet on a circuit different from that to which the receiver is connected.
- Consult an experienced radio/TV technician for help.

Caution:

Changes or modifications not expressly approved by the party responsible for compliance could void the user's authority to operate the equipment.

To meet FCC requirements, shielded cables and power cords are required to connect this device to a personal computer or other Class B certified device.

This digital apparatus does not exceed the Class B limits for radio noise emission from digital apparatus set out in the Radio Interference Regulation of Industry Canada.

Le présent appareil numérique n'émet pas de bruits radioélectriques dépassant les limites applicables aux appareils numériques de classe B prescrites dans le Règlement sur le brouillage radioélectrique publié par Industrie Canada.

**NORMAS OFICIALES MEXICANAS (NOM)
ELECTRICAL SAFETY STATEMENT****INSTRUCCIONES DE SEGURIDAD**

1. Todas las instrucciones de seguridad y operación deberán ser leídas antes de que el aparato eléctrico sea operado.
2. Las instrucciones de seguridad y operación deberán ser guardadas para referencia futura.
3. Todas las advertencias en el aparato eléctrico y en sus instrucciones de operación deben ser respetadas.
4. Todas las instrucciones de operación y uso deben ser seguidas.
5. El aparato eléctrico no deberá ser usado cerca del agua—por ejemplo, cerca de la tina de baño, lavabo, sótano mojado o cerca de una alberca, etc..
6. El aparato eléctrico debe ser usado únicamente con carritos o pedestales que sean recomendados por el fabricante.
7. El aparato eléctrico debe ser montado a la pared o al techo sólo como sea recomendado por el fabricante.
8. Servicio—El usuario no debe intentar dar servicio al equipo eléctrico más allá a lo descrito en las instrucciones de operación. Todo otro servicio deberá ser referido a personal de servicio calificado.
9. El aparato eléctrico debe ser situado de tal manera que su posición no interfiera su uso. La colocación del aparato eléctrico sobre una cama, sofá, alfombra o superficie similar puede bloquea la ventilación, no se debe colocar en libreros o gabinetes que impidan el flujo de aire por los orificios de ventilación.
10. El equipo eléctrico deber ser situado fuera del alcance de fuentes de calor como radiadores, registros de calor, estufas u otros aparatos (incluyendo amplificadores) que producen calor.
11. El aparato eléctrico deberá ser conectado a una fuente de poder sólo del tipo descrito en el instructivo de operación, o como se indique en el aparato.

12. Precaución debe ser tomada de tal manera que la tierra física y la polarización del equipo no sea eliminada.
13. Los cables de la fuente de poder deben ser guiados de tal manera que no sean pisados ni pellizcados por objetos colocados sobre o contra ellos, poniendo particular atención a los contactos y receptáculos donde salen del aparato.
14. El equipo eléctrico debe ser limpiado únicamente de acuerdo a las recomendaciones del fabricante.
15. En caso de existir, una antena externa deberá ser localizada lejos de las líneas de energía.
16. El cable de corriente deberá ser desconectado del cuando el equipo no sea usado por un largo periodo de tiempo.
17. Cuidado debe ser tomado de tal manera que objetos líquidos no sean derramados sobre la cubierta u orificios de ventilación.
18. Servicio por personal calificado deberá ser provisto cuando:
 - A: El cable de poder o el contacto ha sido dañado; u
 - B: Objetos han caído o líquido ha sido derramado dentro del aparato; o
 - C: El aparato ha sido expuesto a la lluvia; o
 - D: El aparato parece no operar normalmente o muestra un cambio en su desempeño; o
 - E: El aparato ha sido tirado o su cubierta ha sido dañada.

TRADEMARKS

The trademarks mentioned in this manual are the sole property of their owners.

CONTENTS

1. Specifications 6

2. Introduction 7

 2.1 General 7

 2.2 What You Need 7

 2.2.1 What the Package Includes 7

 2.2.2 What You Need to Supply 7

3. Installation 8

 3.1 Hardware Installation 8

 3.2 Software Driver Installation 8

 Step A: Installing the Driver for the Hub Device 9

 Step B: Installing the Driver for the RS-232 Serial Port 14

 Step C: Installing the Driver for the Printer Port 20

 Step D: Installing the Driver for the COM Port 25

 Step E: Check to Make Sure the USB Devices are
 Installed Correctly 30

1. Specifications

Data Rate—*RS-232 interface*: 9600 to 115.2 kbps

Distance—*RS-232 interface*: 50 ft. (15.2 m)

Agency Compliance—CE; FCC Class B, Part 15; UL #E132137

Temperature—*Operating*: 32 to 158 °F (0 to 70 °C); *Storage*: 32 to 185°F (0 to 85 °C)

Indicators—(5) LEDs: (1) Power, (3) USB Port, (1) USB RS-232 Printer

Connectors—*Interface A*: (1) B Type USB, (3) A Type USB; *Interface B*: (1) DB25 female parallel; *Interface C*: (1) DB9 male RS-232

Power—*Internal*: From the RS-232 interface; *External*: IC139A-R2: 110 VAC, IC139AE-R2: 220 VAC

Size—1.5"H x 5.6"W x 3.5"D (3.8 x 14.2 x 8.9 cm)

Weight—2.5 lb. (1.1 kg)

2. Introduction

2.1 General

The USB Director II is an intelligent, stackable expansion module that connects to a PC or server via the Universal Serial Bus (USB) port. It provides one high-speed RS-232 serial port, one printer port, and three downstream USB ports for connecting traditional serial devices and other USB devices. Two models are available: one for 110 VAC and one for 220 VAC.

By simply plugging in a USB Director II, you will:

- Add one high-speed serial port, one printer port, and three downstream USB ports to your PC or server in seconds.
- Eliminate the difficult configuration issues associated with higher-priced, older card solutions, which take up valuable slots in your PC.
- Avoid the hassle of removing your PC cover, or rebooting the operating system during installation.

2.2 What You Need

2.2.1 WHAT THE PACKAGE INCLUDES

- (1) USB Director II (part number IC139A-R2 or IC139AE-R2)
- (1) 6-ft. (1.8-m) USB cable (AB type)
- (1) switching power adapter (110 VAC for IC139A-R2, 220 VAC for IC139AE-R2)
- (1) Windows 98 driver diskette (NOTE: For Windows 2000 or Windows ME compatibility questions, please call Black Box Technical Support at 724-746-5500.)
- (1) user's manual

2.2.2 WHAT YOU NEED TO SUPPLY

- (1) Pentium-class CPU with USB port PC
- (1) available USB type A (downstream) port

3. Installation

To install the USB Director II, follow these steps:

1. Verify that your system supports USB.
2. If it does not support USB, determine why.
3. Connect the appropriate cables to the connectors on the USB Director II and to your devices.
4. Install the drivers.
5. Test the USB Director II for related PC platform.

3.1 Hardware Installation

Plug the flat end of the USB cable into the downstream A connector located in the back of your computer or USB hub port. Plug the upstream B connector into the USB Director II.

3.2 Software Driver Installation

NOTE

The driver installation is divided into four steps. Make sure you go through the installation in order from Step A to Step D.

Step A: Installing the Driver for the Hub Device

A1. Insert the Windows 98 CD into the CD-ROM drive.

NOTE

For Windows 2000 or Windows ME compatibility questions, please call Black Box Technical Support at 724-746-5500.

A2. Click “Next” to continue (see **Figure 3A-1**).

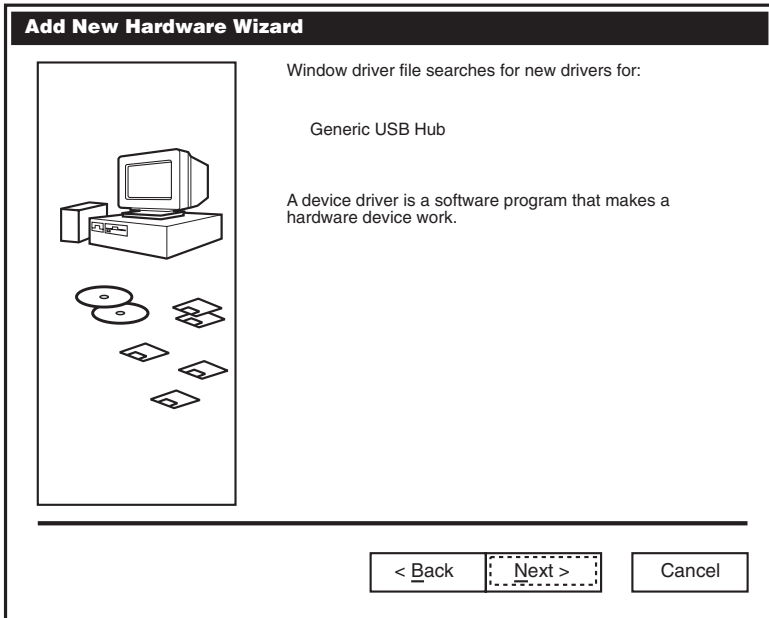


Figure 3A-1. Add New Hardware Wizard screen.

A3. Click “Next” to initiate a search for the best driver for your device (see **Figure 3A-2**).

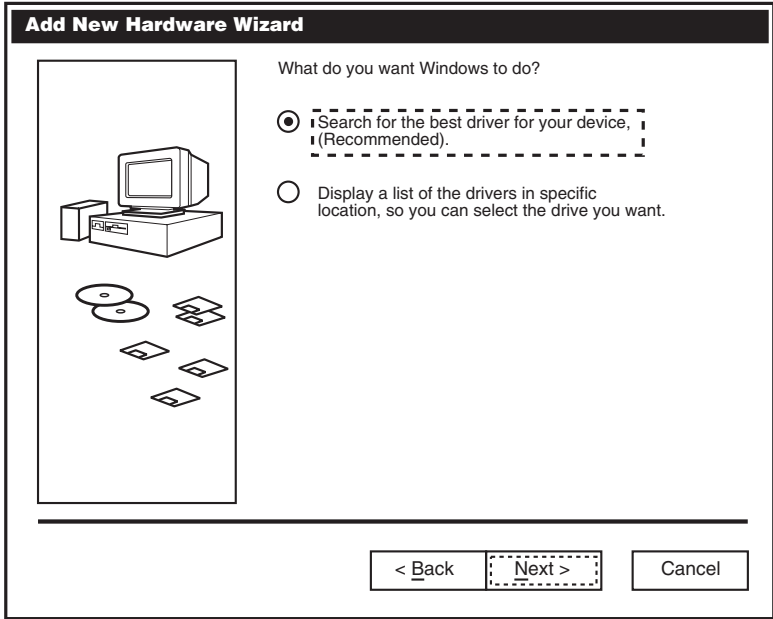


Figure 3A-2. What Do You Want Windows to Do? screen.

A4. Select “CD-ROM drive” or “Specify a location.” Click “Next” to start the search (see **Figure 3A-3**).

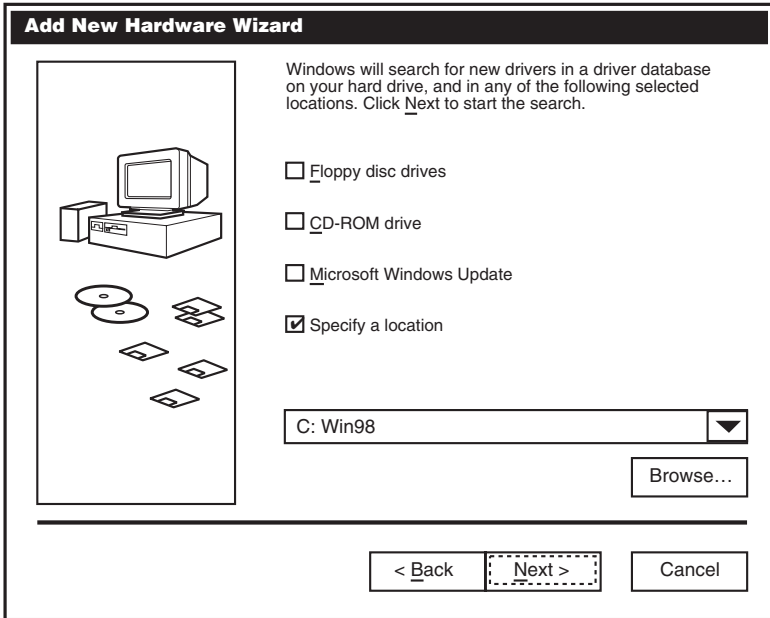


Figure 3A-3. Searching for a Driver.

A5. Click “Next” to continue (see **Figure 3A-4**).

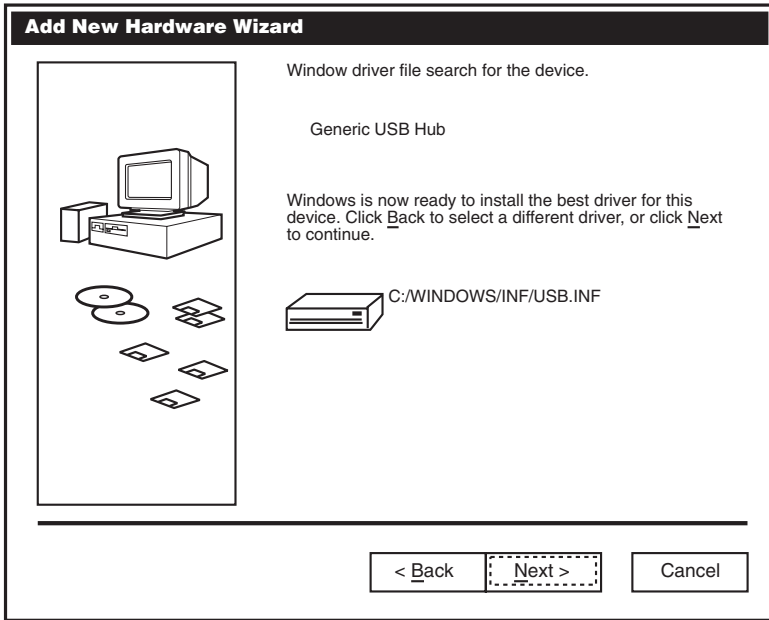


Figure 3A-4. Installing the Driver.

A6. Click “Finish.” Windows has finished installing the device (see **Figure 3A-5**).

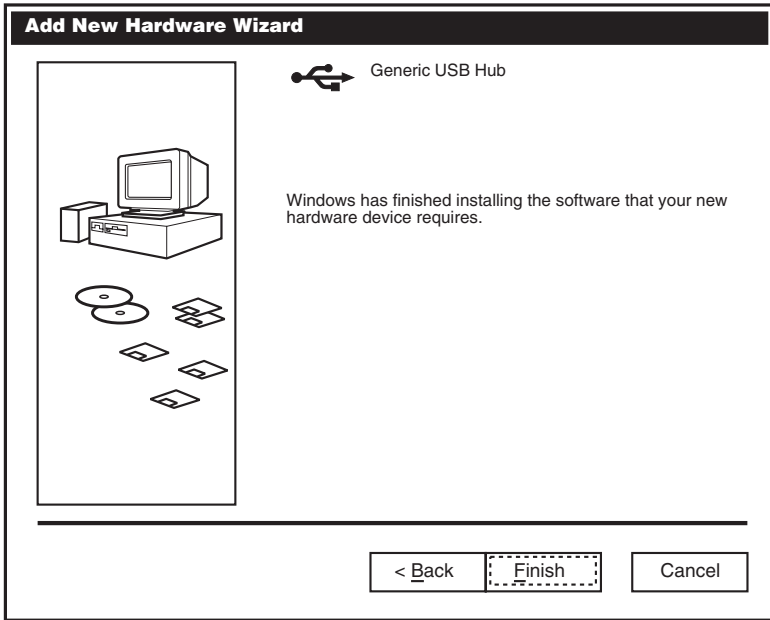


Figure 3A-5. Driver Installation is Finished screen.

Step B: Installing the Driver for the RS-232 Serial Port

B1. Insert the driver diskette into drive A:.

B2. Click “Next” to continue (see **Figure 3B-1**).

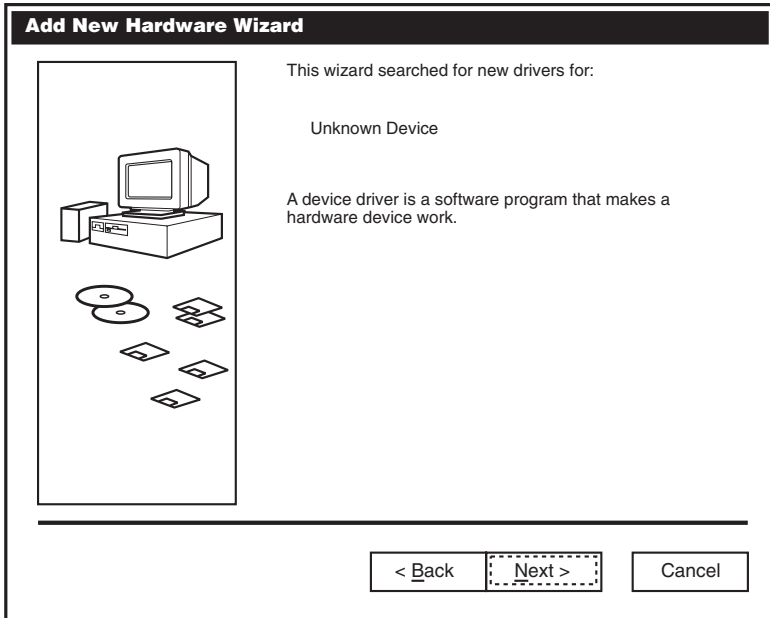


Figure 3B-1. What Do You Want Windows to Do? screen.

B3. Click “Next” to initiate a search for the best driver for your device (see **Figure 3B-2**).

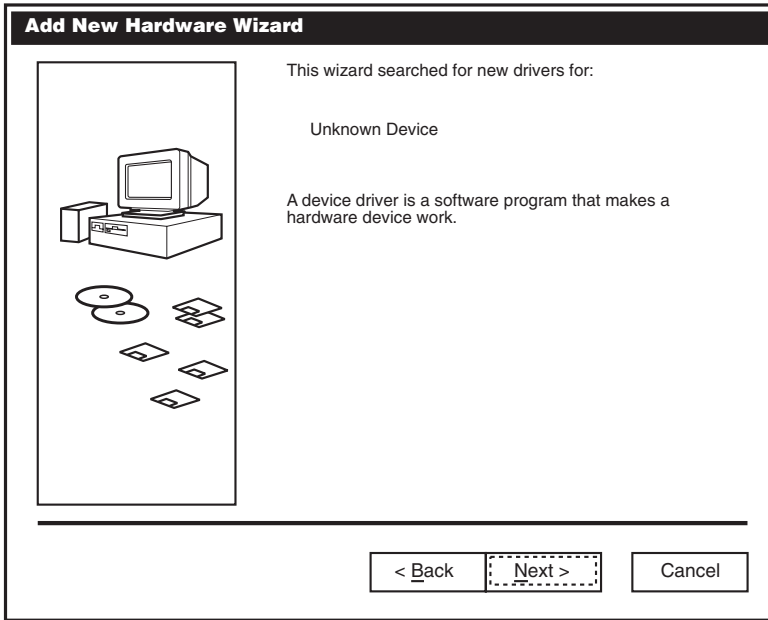


Figure 3B-2. Searching for New Drivers.

B4. Select “Floppy disk drives.” Click “Next” to start the search (see **Figure 3B-3**).

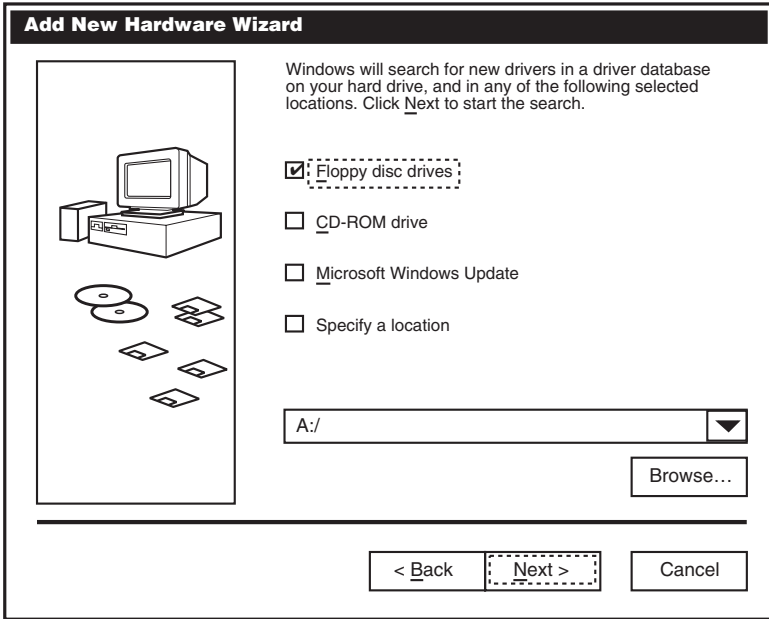


Figure 3B-3. Searching the Floppy Drive for Drivers.

B5. Click “Next” to continue (see **Figure 3B-4**).

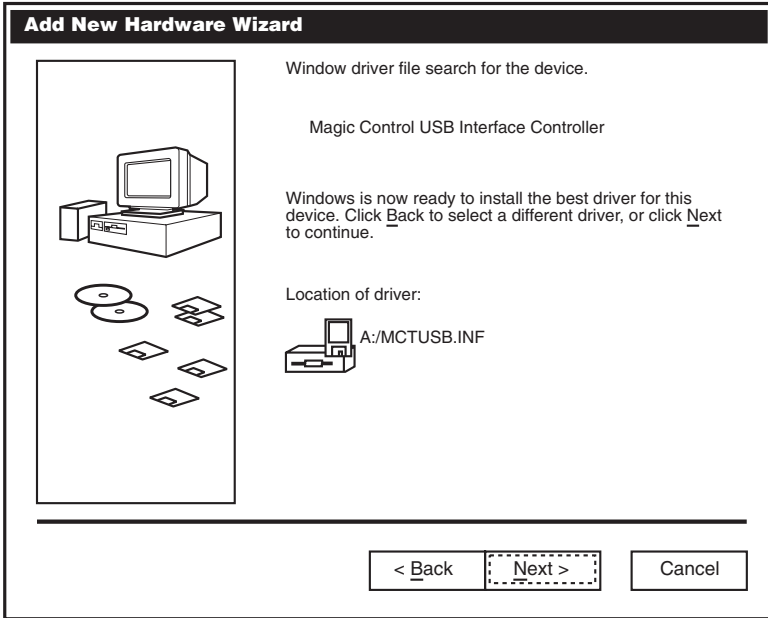


Figure 3B-4. Continue screen.

B6. Type "A:" in the "Copy files from" field and click "OK" (see **Figure 3B-5**).

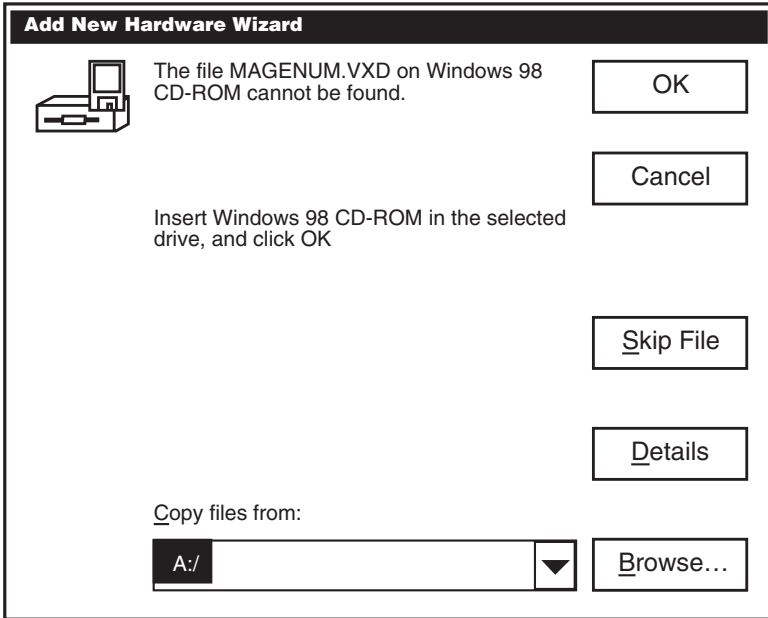


Figure 3B-5. Copy Files From screen.

B7. Click “Finish.” Windows has finished installing the device (see **Figure 3B-6**).

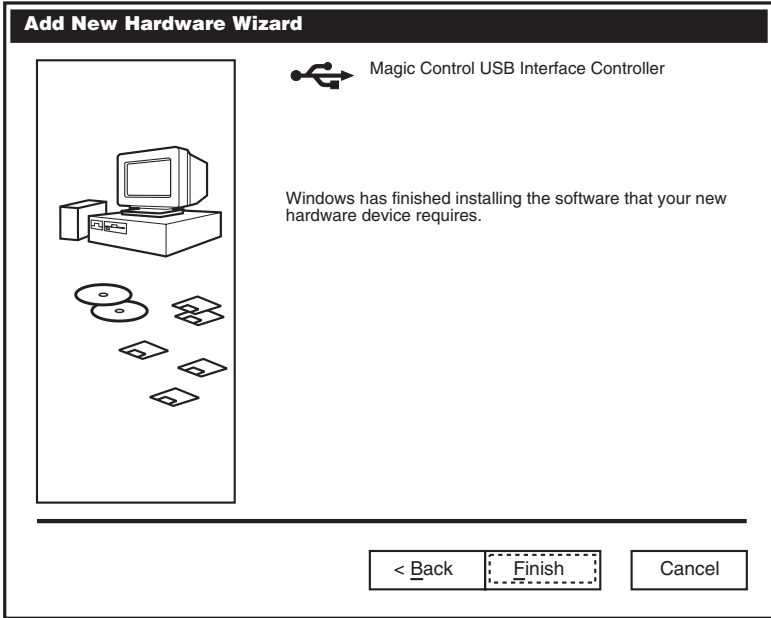


Figure 3B-6. Installation Finished screen.

Step C: Installing the Driver for the Printer Port

C1. Click “Next” to continue (see **Figure 3C-1**).

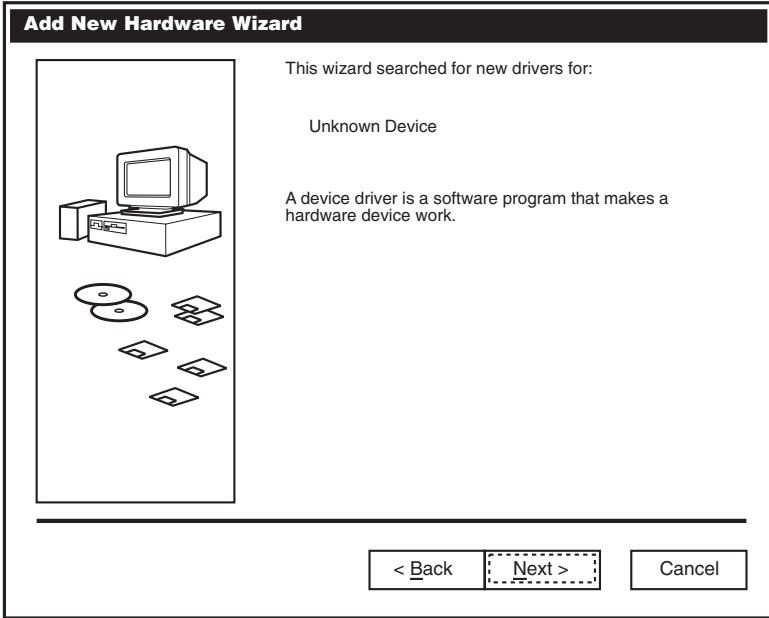


Figure 3C-1. Add New Hardware Wizard screen.

C2. Click “Next” to initiate a search for the best driver for your device (see **Figure 3C-2**).

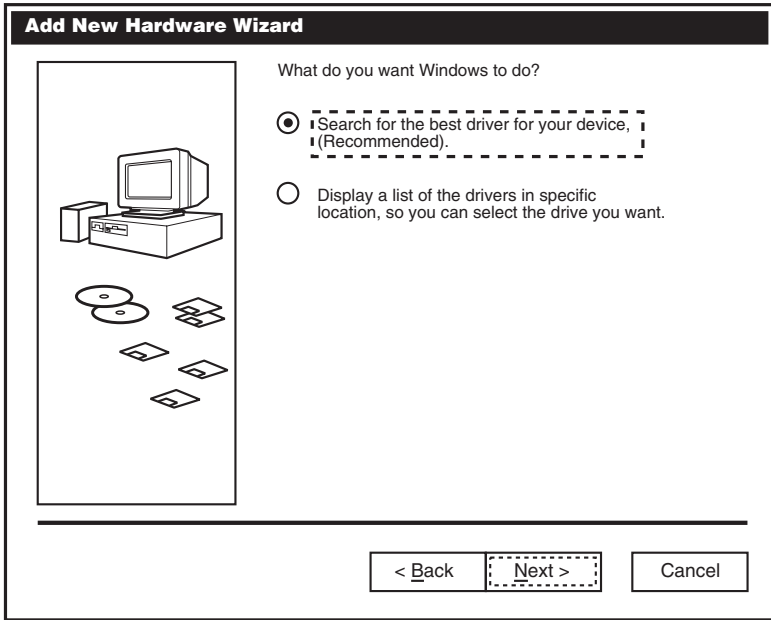


Figure 3C-2. Search for Driver screen.

C3. Select “Floppy disc drive.” Click “Next” to start the search (see **Figure 3C-3**).

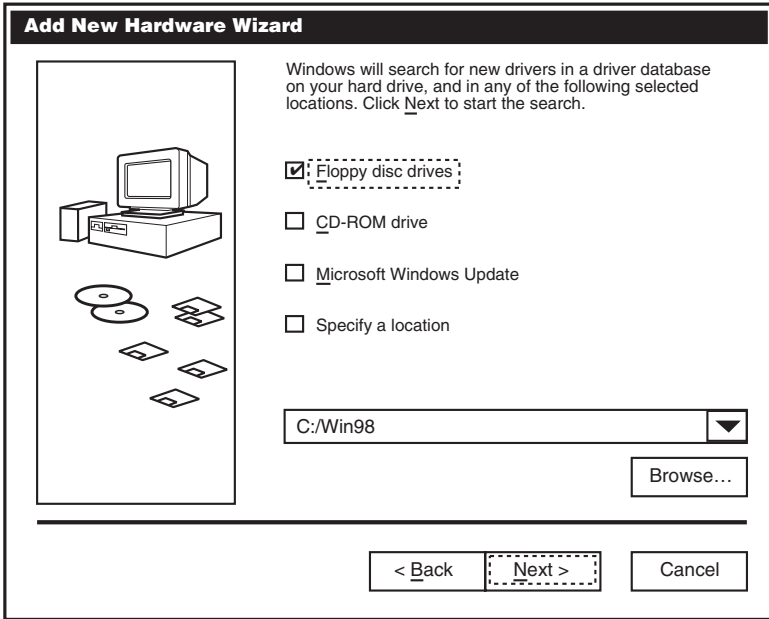


Figure 3C-3. Selecting the Floppy Drive screen.

C4. Click “Next” to continue (see **Figure 3C-4**).

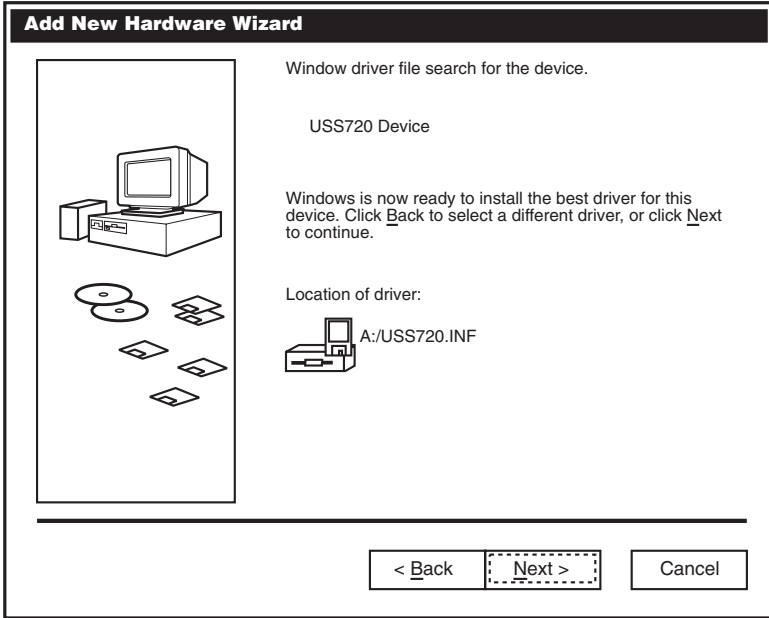


Figure 3C-4. Searching for the Driver.

C5. Click “Finish.” Windows has finished installing the device (see **Figure 3C-5**).

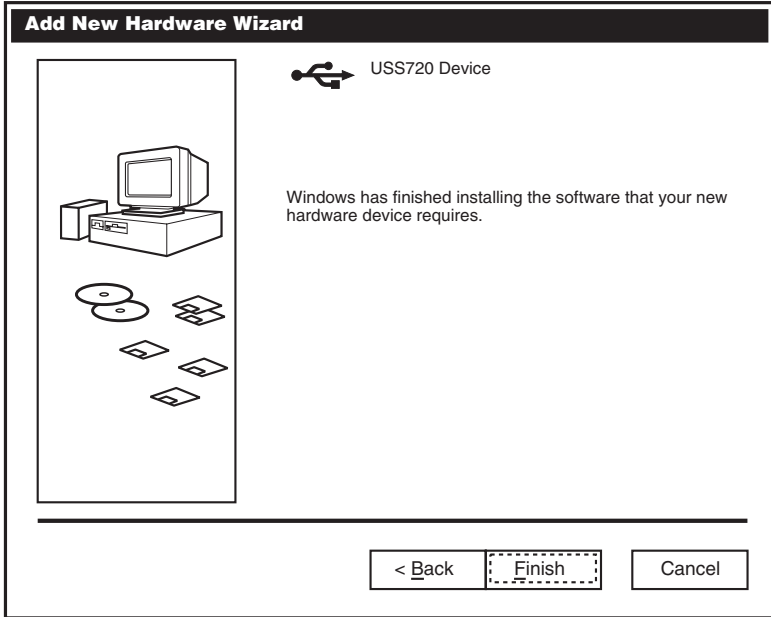


Figure 3C-5. Installation Finished screen.

Step D: Installing the Driver for the COM Port

D1. Click “Next” to continue (see **Figure 3D-1**).

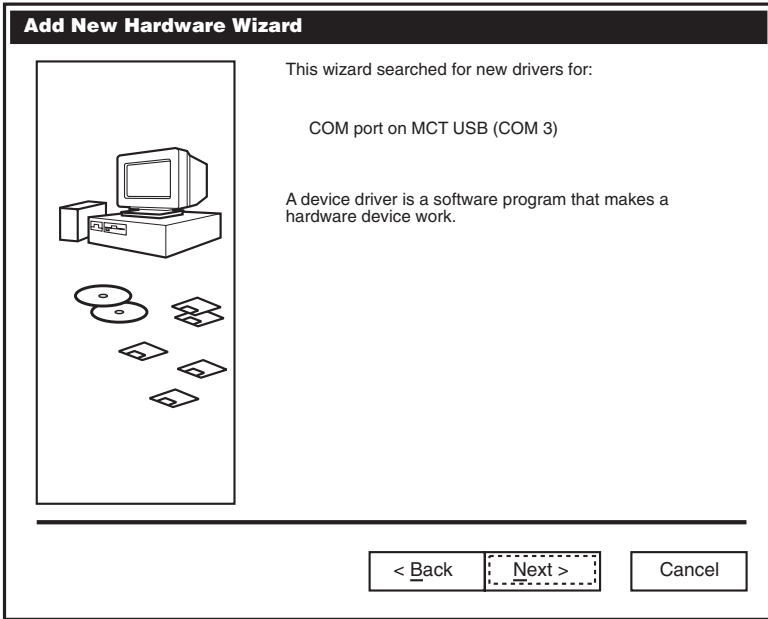


Figure 3D-1. Add New Hardware Wizard screen.

D2. Click “Next” to initiate a search for the best driver for your device (see **Figure 3D-2**).

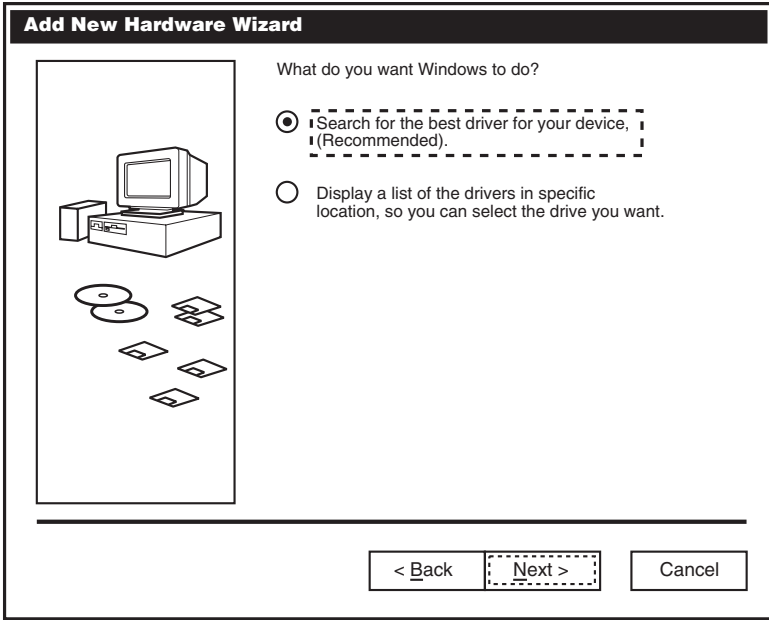


Figure 3D-2. What Do You Want Windows to Do? screen.

D3. Select “Floppy disc drive.” Click “Next” to start the search (see **Figure 3D-3**).

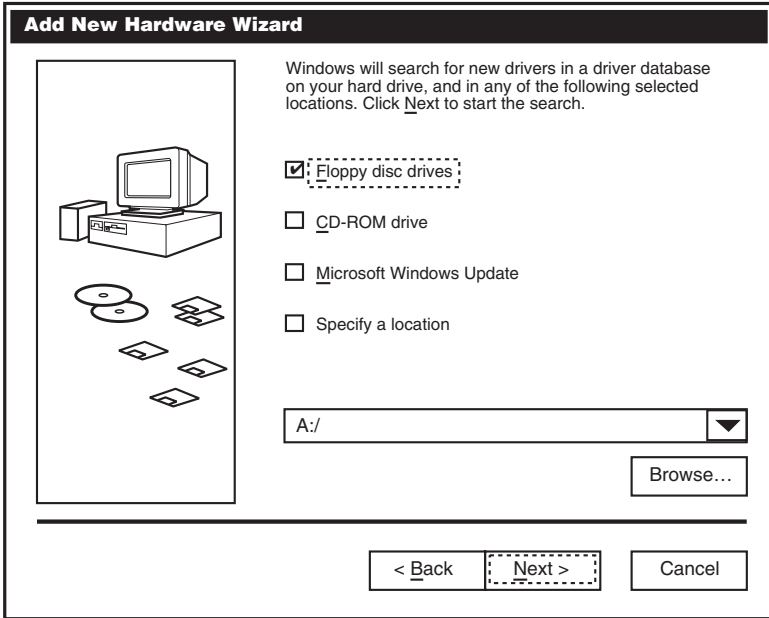


Figure 3D-3. Selecting the Floppy Drive.

D4. Click “Next” to continue (see **Figure 3D-4**).

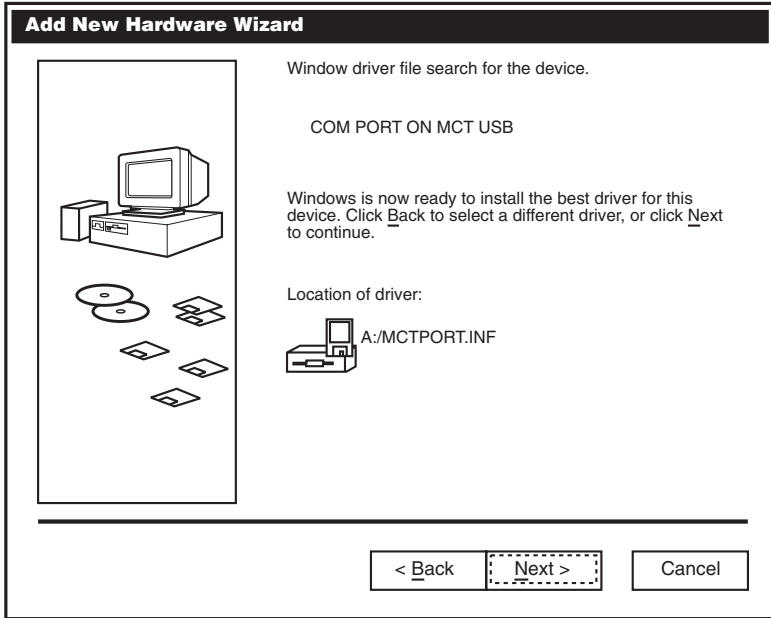


Figure 3D-4. Searching for the Driver.

D5. Click “Finish.” Windows has finished installing the device (see **Figure 3D-5**).

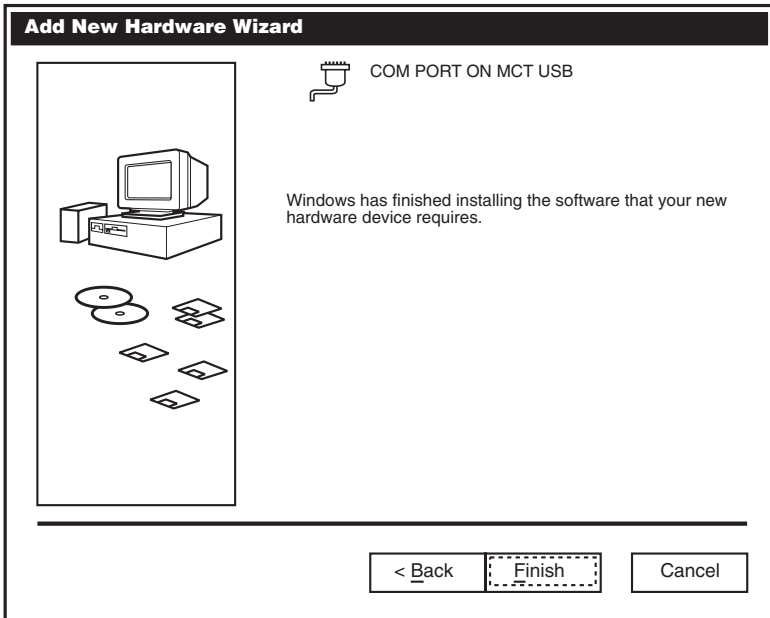


Figure 3D-5. Installation Finished screen.

The following dialog appears:

Congratulations! You have finished installing IC139A/E-R2.

Follow the instructions on the screen. Installation is complete when the dialog disappears. Your one new serial port, one printer port, and three downstream USB ports, numbered sequentially following the existing ports in your system, are now ready to use.

Step E: Check to Make Sure the USB Devices are Installed Correctly

E1. If the “IC139A-R2 COM port” device is installed successfully, you can move the cursor to “My computer.” Click the right mouse button. Then click “Properties.” The “System Properties” dialog box will appear. Click “Device Management,” then select “Ports (COM & LPT).” The dialog box will show a new direction “COM port on MCT USB[COM3].”

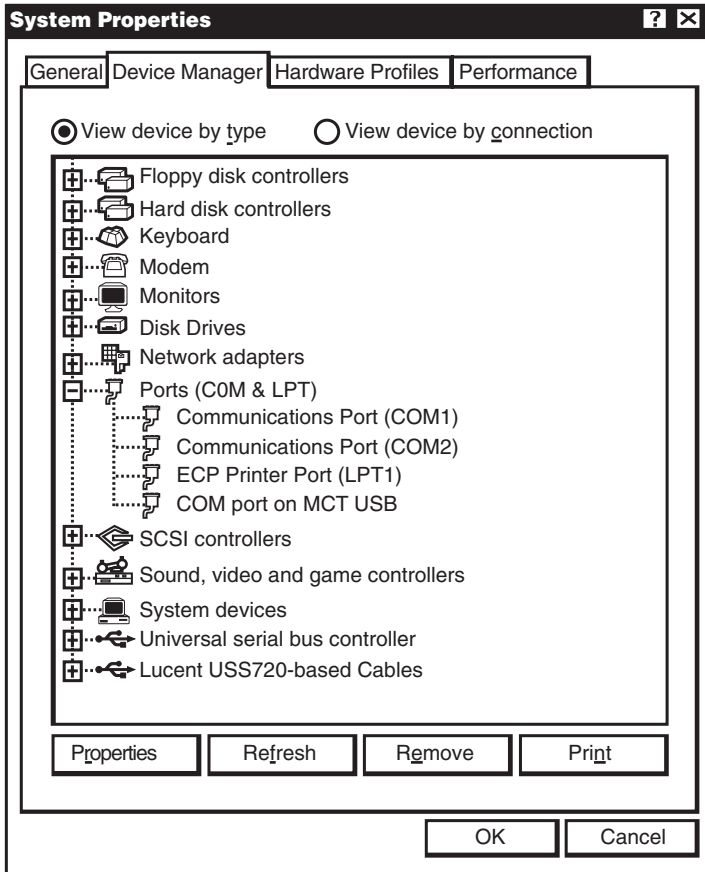


Figure 3E-1. System Properties screen, Device Manager tab, Universal Serial Bus Controller.

E2. If the “IC139A-R2 RS-232” device is installed successfully, you can move the cursor to “My computer.” Click the right mouse button. Click “Properties.” The “System Properties” dialog box will appear. Click “Device Management,” then select “Universal serial bus controller.” You will find that “Generic USB Hub” and “Magic Control USB Interface Controller” are added under this path.

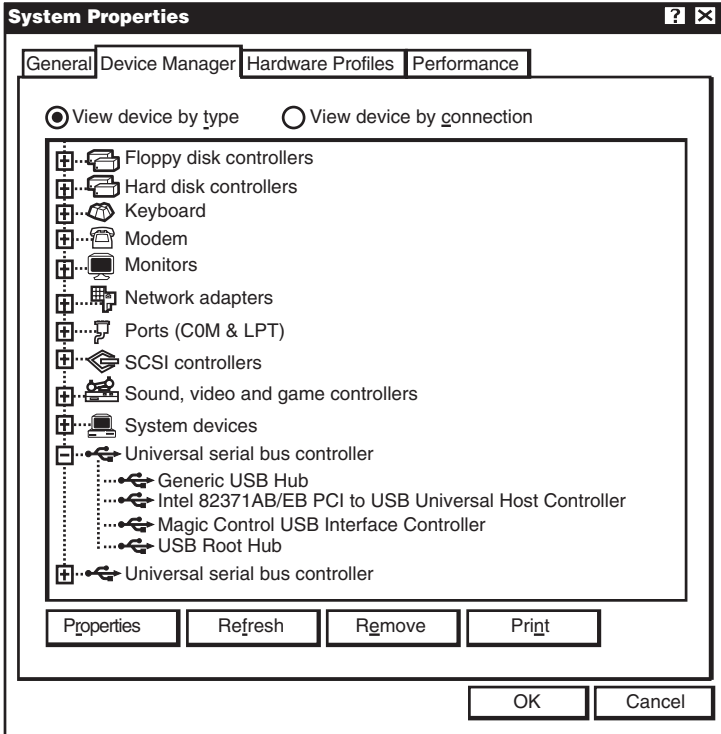


Figure 3E-2. System Properties screen, Device Manager tab, Universal Serial Bus Controller, USB Director Interface Converter.

E3. If the “IC139A-R2 Printer” device is installed successfully, you can move the cursor to “My computer.” Click the right mouse button. A dialog box will appear. Click “Properties,” and the “System Properties” dialog box will appear. Click “Device Management,” then select “Lucent USS720-based Cables” and click it. You will find that “Lucent USS720-based Cables” is added under this path.

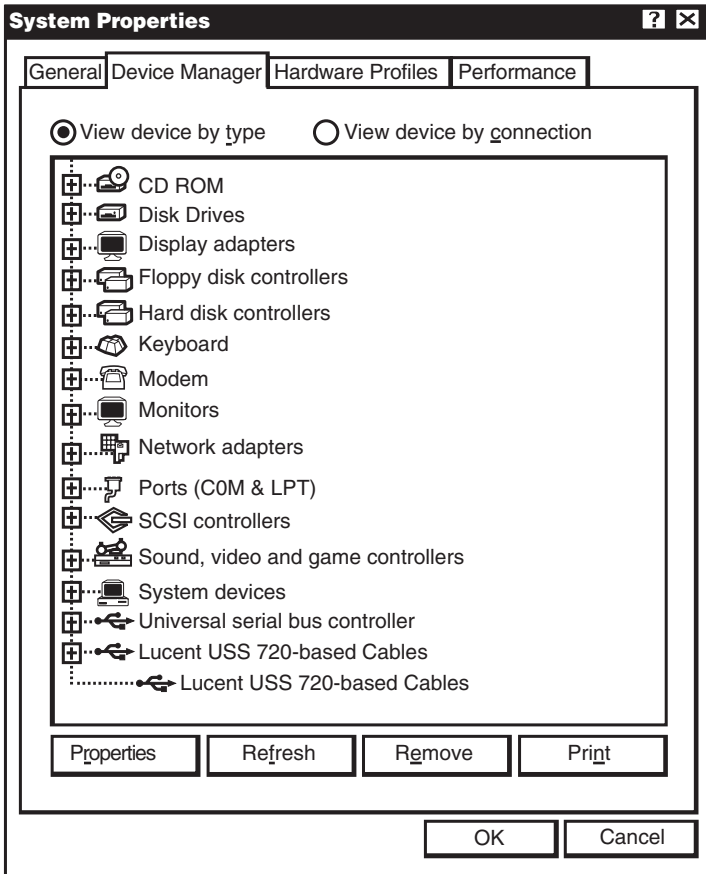


Figure 3E-3. System Properties screen, Device Manager tab, USB Director USB-1284 Port, UDB Director USB-1284 Interface Controller.



© Copyright 1999. Black Box Corporation. All rights reserved.

1000 Park Drive • Lawrence, PA 15055-1018 • 724-746-5500 • Fax 724-746-0746