

# Power Switch

## Maverick PSE504



## Power Management and Server Supervision User Guide

---

---

# PSE504 Power Switch

## User Guide

The **PSE504 Power Switch Maverick** is a power control unit with a built-in Web server, an Ethernet and a serial RS232 connection. It enables you to control individually the power supply of 4 power outlets either remotely through a network (Intranet or Internet) or locally through its serial RS232 connection.

Its special Pinging and Scanning functions also allow the PSE504 to supervise individually 4 IP devices (servers, routers...) and automatically reboot them in case of lock-up.

### Chapters

1. Safety instructions to be read before use!
2. Configuration of the PSE504
3. Configuration using the Power Switch Finder program
4. Configuration using a Web browser
5. Configuration using a Terminal connection
6. Security parameters configuration
7. Ping and Port Scanning
8. Serial port Pin Configuration
9. Command the state of the socket through a Web browser
10. Command the state of the socket through a serial connection
11. Technical data

---

---

## 1. Safety instructions: To be read before use!



- ▶ The Power Switch devices can only be installed by qualified people with the following installation and use instructions. The manufacturer disclaims all responsibility in case of a bad utilisation of the Power Switch devices and particularly any use with equipments that may cause personal injury or material damage.
- ▶ This equipment is designed to be installed on a dedicated circuit that must have a circuit breaker or fuse protection.
- ▶ The electrical power socket used to plug the power cord of the Power Switch device must be close to the Power Switch devices and easily accessible.
- ▶ Check that the power cords, plugs and sockets are in good condition.
- ▶ The Power Switch devices can only be connected to three-wire 230 VAC (50-60Hz) sockets.
- ▶ Always plug the Power Switch devices into properly grounded power sockets (two poles plus ground).
- ▶ Never exceed 10 Amp total load.
- ▶ If you have to replace an external fuse of a Power Switch device, never use another type of fuse than 10A/250V T.
- ▶ The Power Switch devices are intended for indoor use only. Do NOT install them in an area where excessive moisture or heat is present.
- ▶ Always disconnect the power cord of the Power Switch device if you want to intervene on the Power Switch device or on the equipment powered from the Power Switch device.
- ▶ The power outlets of the Power Switch devices are not circuit breakers! If you want to intervene on equipment connected to a Power Switch device you must disconnect this equipment from the Power Switch device.
- ▶ The Power Switch devices contain potentially hazardous voltages. Do NOT attempt to disassemble them.
- ▶ The Power Switch devices contain no user serviceable parts and repairs are to be performed by factory trained service personnel only.

---

---

## 2. Configuration of the Power Switch

To use the Power Switch on your network you must first configure its network parameters. Ask your network administrator for the parameters to use.

There are three different methods to configure the Power Switch:

### Method 1:

Through a network using the Power Switch Finder Program (on the delivered CD).

It is the simplest and fastest configuration method if you use Windows as operating system. We suggest that you use this program at least during the first configuration: it allows you to configure your Power Switch through your local network even if its network parameters (IP Address, Subnet mask and Port) are not compatible with those of your PC or your local network.

If you decide to use this method you can directly go to §3 "Configuration using the Power Switch Finder program".

### Method 2:

Through a network using a Web browser (Internet Explorer > 6.0 and Netscape > 6.1).

This method can only be used if the network parameters of the Power Switch (IP Address, Subnet mask...) have already been configured using either the Power Switch Finder program (Method 1) or using a Terminal program (Method 3).

For the first configuration you can also change the Network parameters of your PC according to the default settings of the Power Switch.

Default Network setting of the Power Switch:

IP Address: 192.168.100.100

Mask: 255.255.255.0

Port: 80

If you decide to use this method you can directly go to §4 "Configuration using a Web browser".

### Method 3:

Through a RS232 serial connection using a Terminal connection (see §7 "Serial Port pin configuration" for the configuration of the serial interface connector).

If you use a PC, use the serial cable supplied with the product and a Terminal program such as HyperTerminal from Microsoft.

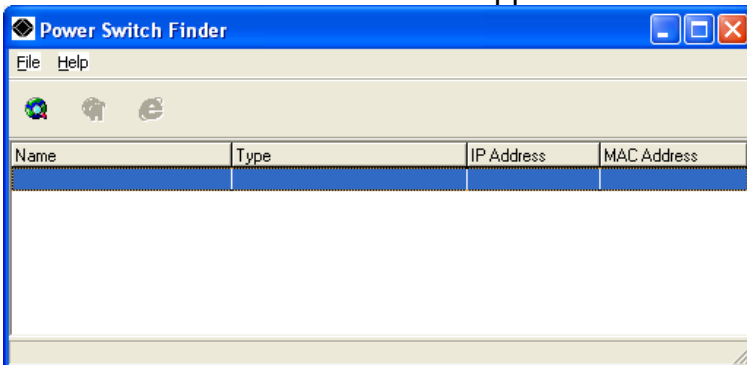
If you decide to use this method you can directly go to §5 "Configuration using a Terminal connection".

### 3. Configuration using the Power Switch Finder program

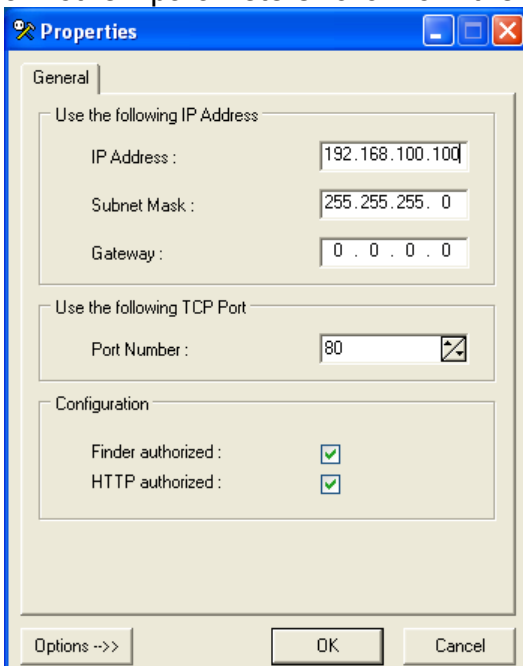
#### Remarks:

- ▽ The Power Switch and the PC used to configure it, have to be connected on the same segment of the network. The protocol of this program cannot be routed so it cannot be used to configure the Power Switch through a WAN or the Internet.
- ▽ This program does not work if the administrator has deactivated it in the configuration of the Power Switch (for security reasons for example).

1. Start the **PS-Finder.exe** program on the CD-ROM.  
The Power Switch Finder window appears.



2. In the tool bar click on the **first left button** or choose the **File/Scan** Menu.  
The program browses the segment on which is connected your PC and displays the name, the type, the IP and MAC Address of the connected Power Switch.
3. In the tool bar click on the **second left button** or choose the **File/Configure** Menu.  
The properties dialog box appears and you can now configure all parameters. To configure all other parameters click on the **Options** button on the bottom of the dialog box.



---

---

## General Tab

This tab is used to configure all the network parameters (IP address, Subnet Mask, Gateway and Port) and also to authorise or prevent the configuration of the Power Switch either using the Finder program or over HTTP.

## Labels Tab

This tab is used to attribute a name to the device and its 4 controlled power outlets.

## Administrator Account Tab

This tab is used to attribute a name and a password to the administrator.

## Users Accounts Tab

This tab is used to attribute a name and a password to the users and to specify which outlet(s) each user has the right to control.

## Security Tab

This tab is used to define addresses that are authorised or denied access to the Power Switch over the Network. For all details about these features, refer to chapter 6 "Security parameters configuration".

## Supervision 1 to Supervision 4 Tabs

These tabs are used to define the IP addresses of the devices that have to be supervised and all the corresponding parameters. The Power Switch can supervise IP devices by pinging specific IP addresses and/or by scanning specific port numbers.

---

**Remark:** the supervision function works only if the corresponding power outlet is switched ON.

---

## Options Tab

This tab is used to define individually the default status of each power outlet after power up and the delay for the restart function for each power outlet.

## Miscellaneous Tab

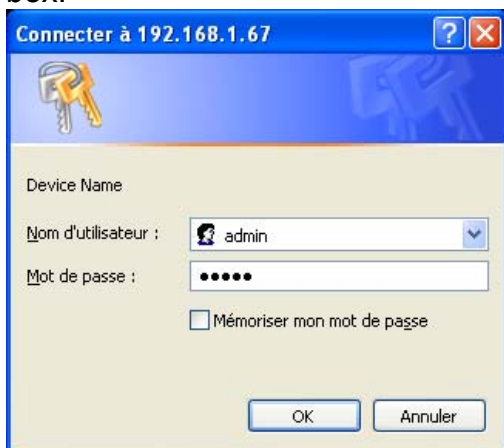
This tab indicates the number of Power Ups and the number of switching cycles from OFF to ON for each power outlet.

## 4. Configuration using a Web browser

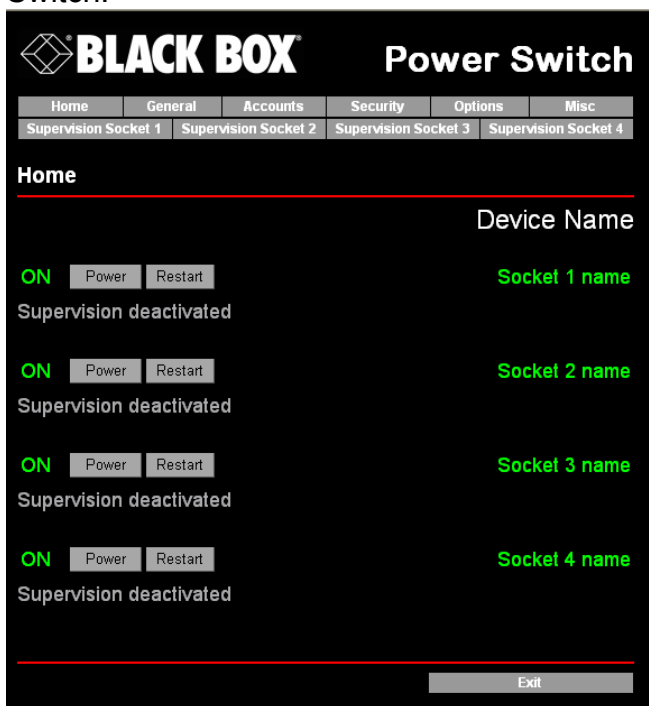
### Remarks:

- ▽ In order to be able to access the Web server of the Power Switch, you must before have configured its network parameters (ask your network administrator for the parameters to use).
- ▽ The Web server of the Power Switch works with Internet Explorer Version 6.0 or higher and with Netscape Version 6.1 or higher.

1. Start your Web browser.
2. Type the IP address of your Power Switch. The browser displays the authentication dialog box.



3. Enter the administrator name (default value = admin) and the administrator password (default value = admin) and click on OK. The home page is displayed, allowing you to configure all the parameters of the Power Switch.



---

---

## Home Tab

This tab is used to switch on, off and restart the controlled power outlets and to configure the Power Switch.

## General Tab

This tab is used to:

- attribute a label to the Power Switch and its 4 controlled power outlets,
- define all IP parameters (IP Address, Subnet mask, Gateway and Port number),
- authorise or deny the use of the Power Switch Finder program,
- authorise or deny the configuration of the Power Switch through HTTP.

## Accounts Tab

This tab is used to attribute a name and a password to the administrator and 4 users. It also enables you to define the power outlets each user can control.

## Security Tab

This tab is used to set Network Security Masks. For all details about these features, please refer to chapter 6 "Security parameters configuration".

## Options Tab

This tab is used to define individually the default status (On, Off or last state memorised) of each power outlet after power up and the delay for the restart function of each power outlet.

## Miscellaneous Tab

This tab indicates the number of Power Up and the number of switching cycles from OFF to ON for each controlled power outlet.

## Supervision 1 to Supervision 4 Tab

These tabs are used to define the IP addresses of the devices that have to be supervised as well all the corresponding parameters. The Power Switch can supervise IP devices by pinging specific IP addresses and/or scanning specific port numbers.

---

**Remark:** the supervision function works only if the corresponding power outlet is switched ON.

---

The Button "**Apply changes**" saves all the configuration parameters.

The Button "**Discard Changes**" cancels the changes of the corresponding tab.

The Button "**Exit**" enables you to quit without saving the configuration parameters.



## 5. Configuration using a Terminal Connection

The RS232 serial port of the Power Switch can be used to control its power socket and to configure its Web server.

To configure the Web server:

1. Use the supplied RS232 serial cable to connect the PSE504 to an available serial port of your PC.
2. Run a terminal program such as Windows HyperTerminal.
3. Configure the appropriate serial port with the following settings: 9.600 baud, 8 bits, no parity, 1 stop bit and no flow control.
4. From your computer, press <ENTER> until the prompt «>» appears on your screen.

---

**Remark:** the Power Switch is now in the Command mode and is waiting for commands to control the power outlets.

---

5. Press the <TAB> key on your keyboard.  
The Configuration menu appears on your screen and the Power Switch is now in Configuration mode. Follow the menu to configure the Web server of your Power Switch.

```
Commands :
Display
  /DS      Display the Sockets Status
Control
  /SS      Switch the Sockets
Configuration
  /NP      Network Parameters Settings
  /PS      Passwords Settings
  /NS      Device and Socket Names Settings
  /SP      Socket Parameters settings
  /SU      Socket Supervision Settings
  /IS      IP Security Settings
  /RS      Restart the Device
Enter Selection
>
```

All commands start with the slash «/»

(ex.: type the command **/NP** to go to the **Network Parameters** setting menu.

To display the current menu again, press <ENTER>.

To go to the previous menu and display it, press <ESC>.

---

**Remark:** to leave the configuration mode, type the restart command **/RS**. This is particularly important if you want to control the power outlet later through the serial connection.

---

---

---

## 6. Security parameters configuration

Explanations about the masks settings:

- ▽ Each mask can be an IP address or a range of IP addresses.
- ▽ Each mask allows you to authorise or deny access to the Web server of the Power Switch to specific addresses or to specific ranges of addresses.
- ▽ Each mask can be activated or deactivated (without function in this case).
- ▽ Each IP address consists of a series of four eight-bit numbers. The number 255 is used as a wildcard, so it replaces all others.
- ▽ Masks are listed in order of descending priority; so Mask 1 has the highest priority.
- ▽ Masks have a cumulative effect; high priority masks supersede the effect of lower priority masks.

### Example 1:

⇒ Deny the access to all IP addresses except 192.168.001.015

Mask	IP Address	Permit	Deny	Activated
#1	192.168.001.015	✓		✓
#2	255.255.255.255		✓	✓

### Example 2:

⇒ Permit access only to IP addresses beginning with 192.

Mask	IP Address	Permit	Deny	Activated
#1	192.255.255.255	✓		✓
#2	255.255.255.255		✓	✓

---

---

**Example 3:**

- ⇒ Permit access only to IP addresses beginning with 192
- ⇒ Deny access to IP address 192.168.001.010

Mask	IP Address	Permit	Deny	Activated
#1	192.168.001.010		✓	✓
#2	192.255.255.255	✓		✓
#3	255.255.255.255		✓	✓

**Example 4:**

- ⇒ Permit access to IP addresses beginning with 192
- ⇒ Deny access to address 192.168.001.010
- ⇒ Permit access to IP addresses beginning with 217.128.103

Mask	IP Address	Permit	Deny	Activated
#1	192.168.001.010		✓	✓
#2	192.255.255.255	✓		✓
#4	217.128.103.255	✓		✓
#3	255.255.255.255		✓	✓

---

---

## 7. Ping and Port Scanning

Power Switch has two methods to check whether an IP equipment (PC, server, router, Webcam...) is still alive.

### **Ping**

The first method uses the well-known Ping command whereby a request is sent to a specific IP address. The Ping command, which is an echo request, enables you to determine through an ICMP protocol (Internet Control Message Protocol) if an IP device is available on the network. If the system reacts to this request, Power Switch knows that the TCP/IP connection is established. If the system does not react to one or several requests, Power Switch can automatically switch off and after a specified delay switch again on the IP equipment (Reboot).

### **Port Scanning**

The second method uses the Port Scan command to test a specific TCP/IP port. In other words, this command allows you to find out if a specific protocol is available on a server (for example HTTP, FTP, Telnet, SMTP, POP...). Power Switch simply tries a connection to a specific server port. If the connection is possible, Power Switch knows that a server program is running there. If the connection is not possible, Power Switch can automatically switch off and after a specified delay switch again on the IP equipment (Reboot).

---

### **Remarks:**

- The Ping and Scan function can be used separately or together.
- The network route between Power Switch and the IP device to supervise should be as direct as possible, so do not use unnecessary routers and complex wiring between them. A problem on a router or the wiring could reboot the IP device to supervise.
- Execute several Pings and/or Scans before running the Reboot function. It could be possible that the IP device to supervise doesn't respond although the IP device is still working.
- Choose a realistic supervision cycle. One second is possible, however it's not necessary to overload the network with Pings and Scans requests.

---

### **Recommended values:**

Interval between Requests	10 sec or more
Number of unsuccessful Requests before Reboot	3 or more
Delay before Reboot	10 sec or more
Delay before first Request after Reboot	120 sec or more

---

---

## 8. Serial Port Pin Configuration

The serial connection uses a SUB-D9 connector with the following configuration:

Pin 2 = TxD (transmit data to the PC)

Pin 3 = RxD (receive commands)

Pin 5 = GND

Parameters: 9600, n, 8, 1 without flow control.

---

---

## 9. Command the state of the socket through a Web browser

1. Start your Web browser  
Type the IP address of your Power Switch.  
The browser displays the authentication dialog box.
2. Enter a user name and its corresponding password.
  - If you enter the administrator name (default value = admin) and the administrator password (default value = admin) and click OK, you will be able to control all the power outlets and also to configure all the parameters of the Power Switch.
  - If you enter a valid user name (default value = user1, user2, user3, user4) and the corresponding user password (default value = user1, user2, user3, user4) and click OK, you will only be able to control the power outlet(s) for which you have the rights.

The **Power** button allows you to switch the corresponding power outlet ON and OFF. The **Restart** button allows you to switch OFF the corresponding power outlet. It will then be automatically switched ON after the delay defined by the administrator during the configuration (default value is 5 sec).

Under the **command** button is displayed the status of the IP supervision.

- If the supervision function is deactivated (can be done by the administrator only) the message «Supervision deactivated» is displayed.
- If the supervision function is activated (can be done by the administrator only) the message «Supervision activated» is displayed.

---

**Remark:** if you switch the socket OFF the supervision function is temporarily deactivated and the message "Supervision temporarily deactivated" is displayed.

---

---

---

## 10. Command the state of the socket through a serial connection

All the power outlets of the **PSE504** can also be controlled using a simple ASCII protocol over a RS232 serial connection.

To control the power socket:

1. Use the supplied RS232 serial cable to connect the **PSE504** to an available serial port of your PC.
2. Run a terminal program such as Windows HyperTerminal.
3. Configure the appropriate serial port with the following settings:  
9.600 baud, 8 bits, no parity, 1 stop bit and no flow control.
4. On your computer, press <ENTER> until the prompt «>» appears on your screen. The Power Switch is now in the command mode and is waiting for commands to switch the power socket.

---

**Remark:** the power outlet of the Power Switch can only be controlled if the Power Switch is in the Command mode and NOT in the Configuration mode. If you are in the Configuration mode type the **/RS** command to leave this mode. By default, the Power Switch is in Command mode after a power up.

---

**Use the following command: Px=y**

Where x = power outlet number (0 to 4)  
0 = all power outlets together  
1 = power outlet 1  
2 = power outlet 2  
3 = power outlet 3  
4 = power outlet 4

Where y = command  
0 = switch corresponding power outlet(s) to Off  
1 = switch corresponding power outlet(s) to On  
r = restart corresponding power outlet(s)  
t = toggle corresponding power outlet(s)

---

---

## Examples:

Switch power outlet 1 ON: p1=1  
Switch power outlet 2 OFF: p2=0

Restart power outlet 1: p1=r  
Restart power outlet 4: p4=r

Toggle power outlet 3: p3=t

Switch all power outlets ON: p0=1  
Restart all power outlets: p0=r

The Power Switch accepts lower case and upper case commands.

The version of the firmware can be displayed by typing "?" followed by <ENTER>.



## 11. Technical data

<b>Network standards</b>	IEEE 802.3, 10BASE-T
<b>Network protocols</b>	TCP/IP, HTTP
<b>Network connection</b>	RJ-45 connector for UTP CAT5
<b>Max. network cable length</b>	100 meters (cable not included)
<b>Serial connection</b>	RS232, SUB-D 9 female
<b>Nominal input voltage</b>	230 V/50Hz
<b>Input power socket</b>	IEC-320
<b>Output voltage</b>	230 V/50Hz
<b>Output power socket</b>	IEC-320
<b>Maximum total current</b>	10 A
<b>Fuse</b>	10 A(T)
<b>LED's</b>	1 for Power and Network Traffic 4 for the socket status
<b>Operating temperature</b>	0°C to +40°C
<b>Operating humidity</b>	10% to 80%
<b>Dimensions</b>	230 X 112 X 42 mm
<b>Weight</b>	1 Kg
<b>Approvals</b>	CE, EN55022 & EN55024