

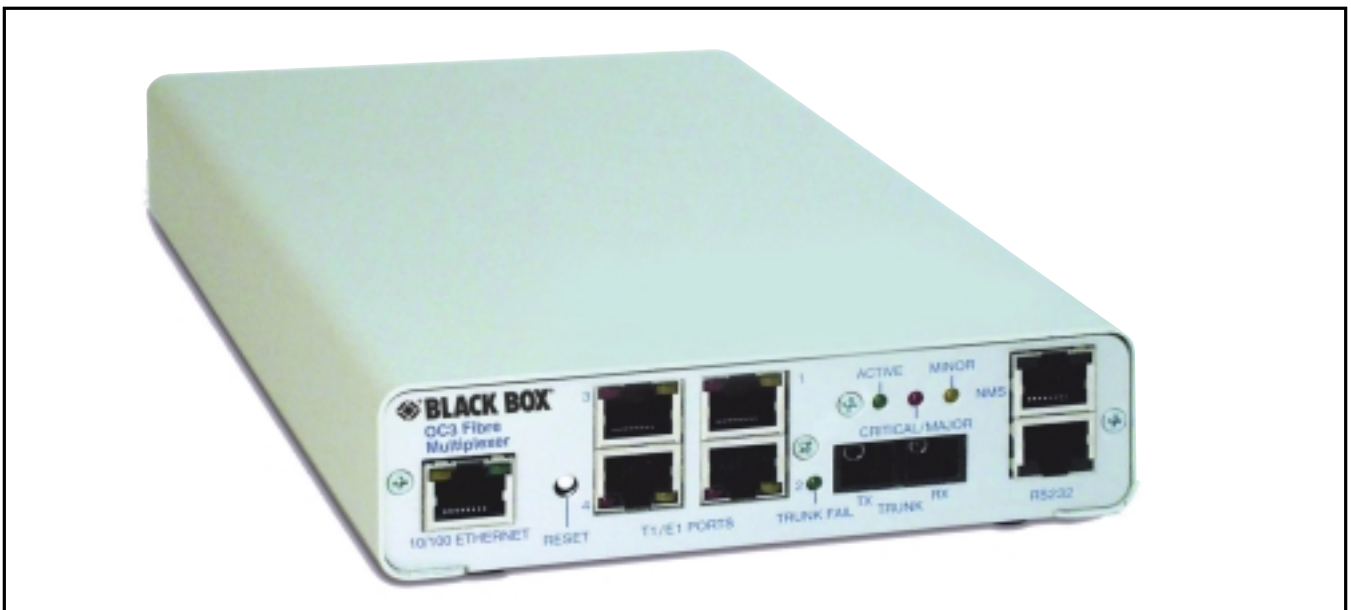


BLACK BOX[®]

NETWORK SERVICES

© 2003. All rights reserved.
Black Box Corporation.

OC3 FIBRE MULTIPLEXOR



Compact optical fibre multiplexor for simultaneous voice and data transmission

Key Features

- ▶ **Optical 5 channel STM-1/OC-3c Multiplexor for point-to-point connections or via SDH/SONET networks**
- ▶ **Simultaneous voice and data transmission**
- ▶ **4 x E1/T1 and 1 x 10/100BaseT on 1300 nm singlemode or multimode fibre-optic**
- ▶ **Web-based management and intergrated error detection function**
- ▶ **Transmission distance: up to 100km**
- ▶ **Compact standalone version**

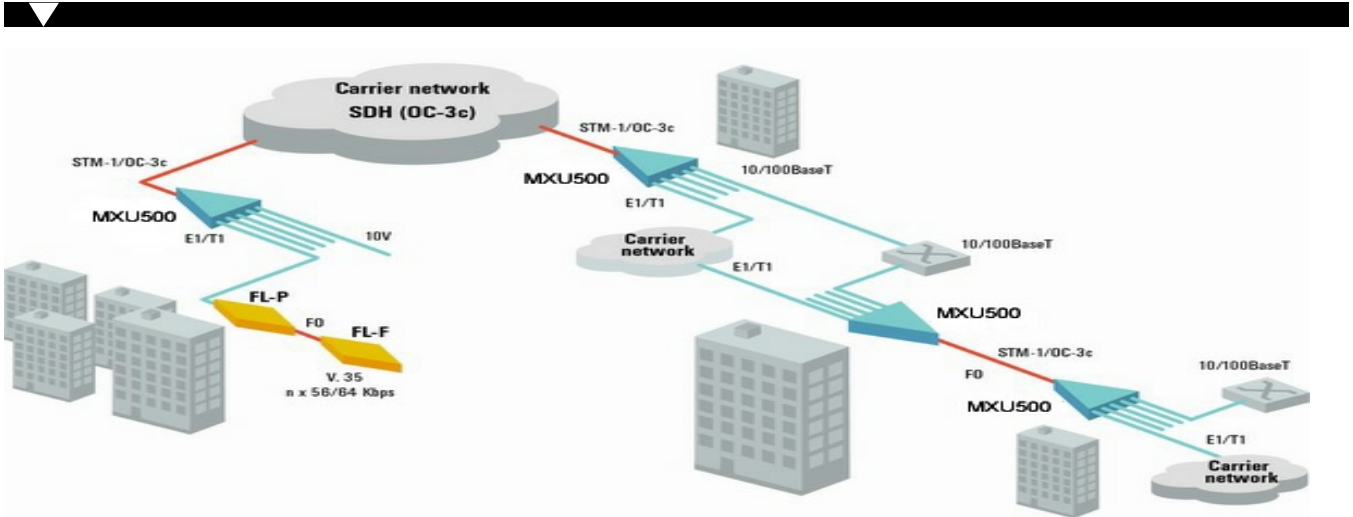
The Black Box MXU500-OC3 is a compact, efficient multiplexor capable of simultaneous processing of up to 5 different data channels. It should be considered the optimal solution for small and medium-sized companies, but it is also widely applicable for carriers and ISPs (Internet Service Providers) systems. This is especially so where the latter require to develop and expand the range of services marketed to their clients.

The unit contains four E1/T1 interfaces and one 10/100BaseT interface. The coding on the line interface is equivalent to the STM1 / OC3C signal used for the SDH/SONET standard. This means that not only can the units be used as simple multiplexers on dedicated fibre the data can also be carried through the standard high speed services of wide area

networks.

With the network capacity of 155 Mbps this ensures that the Ethernet data is carried at full line speed, irrespective of the traffic levels.

Used in pairs, the Black Box OC3 Fibre Multiplexor can be integrated in point-to-point topologies using a fiber line or via SDH/SONET networks. Resources can be configured via an easy to operate web browser including configuration, maintenance, error detection and remote management of the entire network.



Specifications

Data Rate: 1 x 10/100 Mbps (half-/full-duplex, autosensing), 4 x 2.048/1.544 Mbps (E1/T1 unframed)

Connectors: Line Port, SC (STM-1/OC3c 155.52 Mbps). Data Ports - RJ45

Size: 50 x 140 x 230 mm

Power: 230/110 VAC

Ordering Information

ITEM

CODE

OC3 Fibre Multiplexor

Multimode.....MXU500-OC3-MM

Single-modeMXU500-OC3-SM