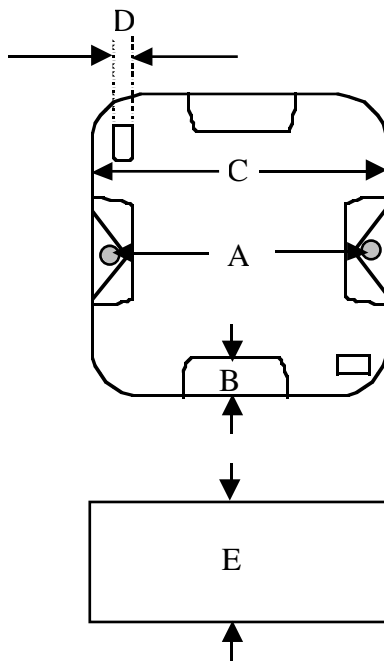


## EuroMod Back Boxes

### Ordering Information

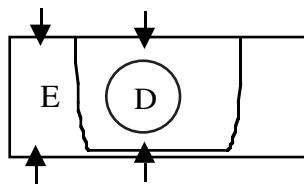
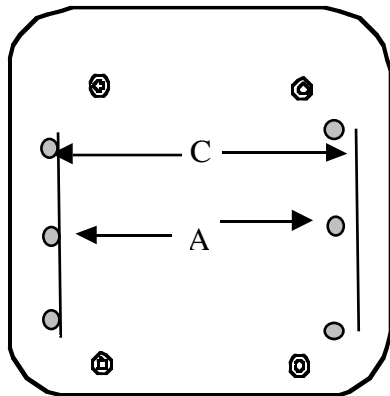
<b>Product</b>	<b>Code</b>
Germany/Netherlands/Belgium, Single-Gang	
Flush-Mount, Black	WPU027
Surface-Mount, White	WPM001
France/Sweden/Spain	
Surface-Mount, White	WPU029
Back-Boxes-UK	
Single-Gang, Surface, White	
25-mm	WPU030
32-mm	WPU031
Double-Gang, Surface, white	
25-mm	WPU032
32-mm	WPU033



WPM001  
 Surface-Mount Back Box for  
 Germany, Belgium and the  
 Netherlands

A: 60 mm  
 B: 13 mm  
 C: 80 mm  
 D: 5 mm  
 E: 40 mm

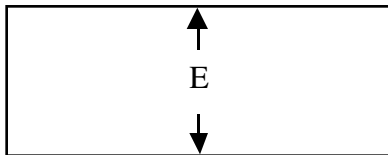
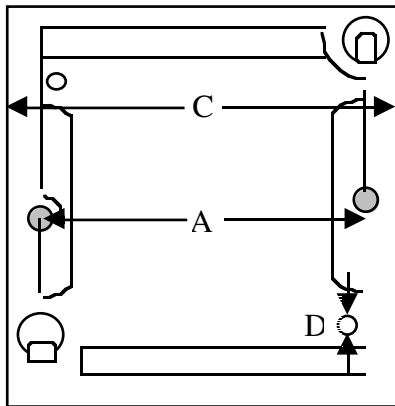
(2) Faceplate mounting screws



WPU027  
 Flush-Mount Back Box for  
 Germany, Belgium and the  
 Netherlands

- A: 60 mm
- B: 13 mm
- C: 71 mm
- D: 24 mm
- E: 45 mm

(2) Faceplate mounting screws  
 supplied



WPU029  
 Surface-Mount Back Box for  
 France/Sweden/Spain

- A: 60 mm
- C: 82 mm
- D: 4.5 mm
- E: 41 mm

(2) Faceplate mounting screws  
 supplied