

DUAL TRUNK E1 ROUTER

Establish primary and backup links to the same destination with this high-speed router



Key Features

- ▶ **High-speed routing for point-to-point (PPP or MLPPP) connections to the Internet or a private IP network.**
- ▶ **Dual E1 network ports for link redundancy and load balancing.**
- ▶ **Fast-forwarding, static and dynamic routing (RIP1, RIP2).**
- ▶ **Full range of network monitoring and diagnostic features.**
- ▶ **Also includes 10BASE-T/100BASE-TX Ethernet interface and a COMM port for management functions.**
- ▶ **Rackmountable.**

The BLACK BOX[®] Dual Trunk E1 Router is the solution when you need to implement a resilient, high-throughput connection for your IP-based network.

Ideal for critical applications where you absolutely must maintain a connection to your main carrier network, the router features dual E1 ports for fault tolerance to your network connections. With two E1 trunks connected through these ports, the router switches traffic to alternate network services if one link fails.

When the failed E1 connection is restored, the Dual Trunk E1 Router automatically brings it back into service and restores the data rate accordingly—all without any user intervention.

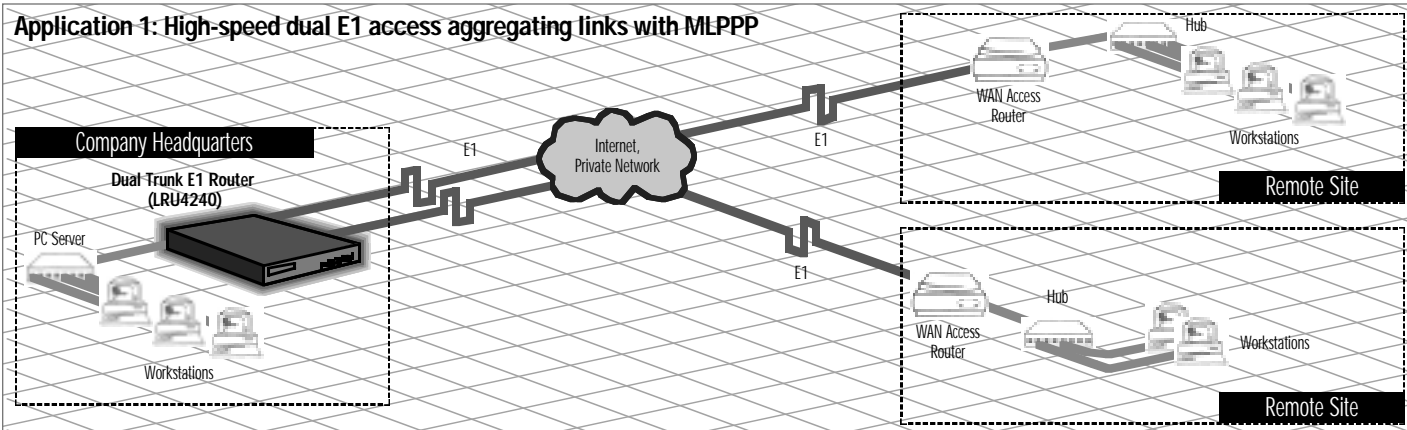
What's more, the Dual Trunk E1 Router not only supports high traffic levels on private IP networks, but it handles the increasing demands of e-commerce and remote-access applications via the Internet.

It also helps you save on equipment costs. The router supports both 75- and 120-ohm connections directly, eliminating the need for additional external converters in your application.

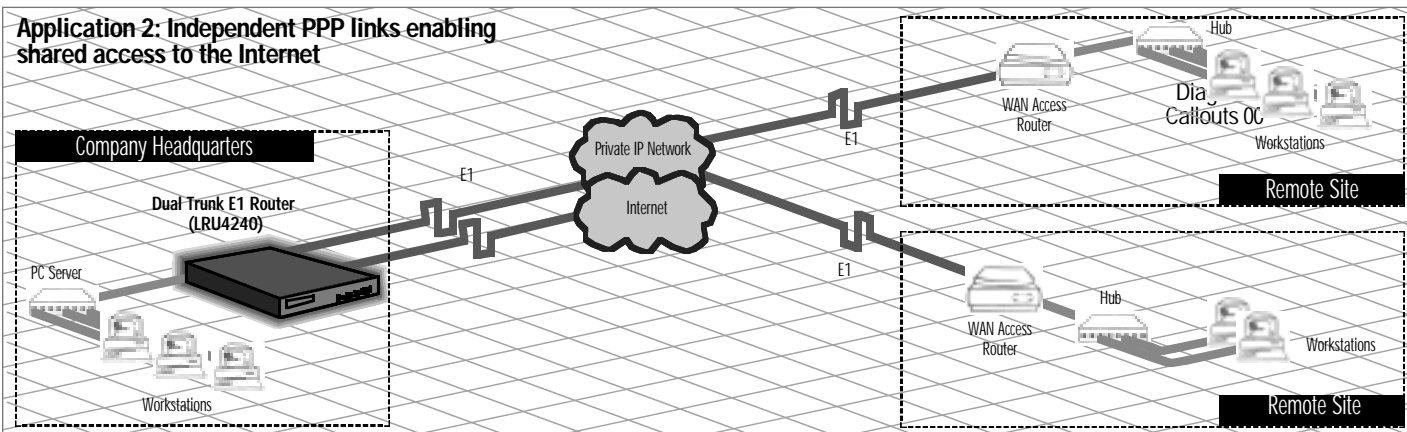
Built-in management features, including support for SNMP, help you stay in control of your end-to-end network connections. The Dual Trunk E1 Router's diagnostic functions include loopback tests and test patterns. Network alarms and front-panel LEDs keep you informed of all router activity.

This 1U-high rackmountable unit also comes with a 10BASE-T/100BASE-TX Ethernet port for your data connections.

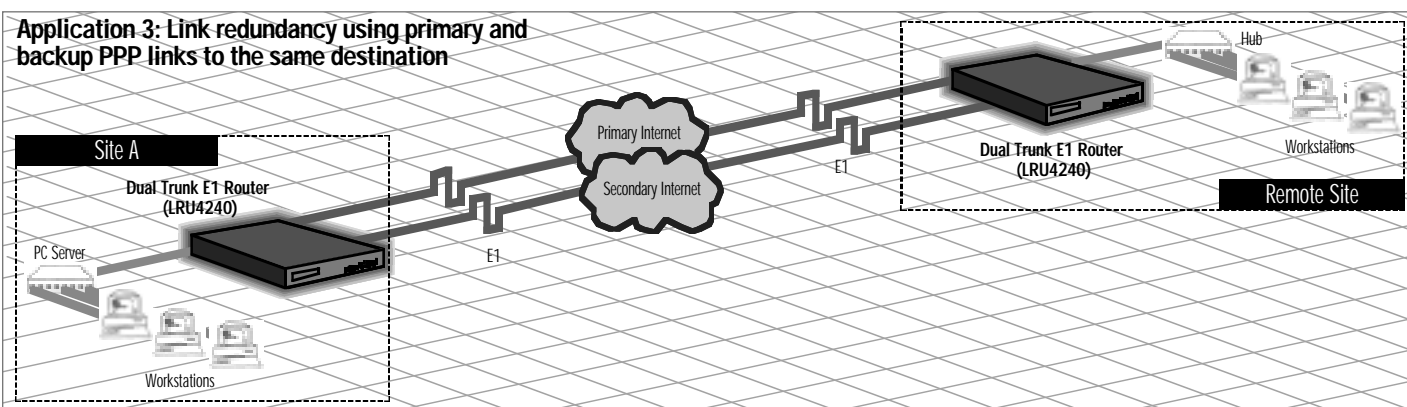
Application 1: High-speed dual E1 access aggregating links with MLPPP



Application 2: Independent PPP links enabling shared access to the Internet



Application 3: Link redundancy using primary and backup PPP links to the same destination



Specifications

SData Rates — WAN or Internet: Up to 2.048 Mbps;
Data: 10 or 100 Mbps

Environment — Temperature:
Operating: 0° to 50°C; Storage: -20° to +60°C;
Relative Humidity: 0 to 95% non-condensing

Network Alarms — Loss of signal, loss of frame, remote alarm indication, alarm indication signal, CRC4, CV, FE

Security — Access lists
Interface — WAN or Internet: E1 (G.703/G.704);
Data: 10BASE-T/100BASE-TX Ethernet

Network Diagnostics — Loopback controls; loopback tests for E1 network, E1 payload, Fractional E1 payload, loop-up and loop-down commands; fixed and user-programmable test patterns with error injection

Protocols — Modes: Fast Forwarding, Routing;
Routing: Static, dynamic through RIP1/RIP2;
WAN: PPP, (2) independent PPP and MLPPP

Power — Input: 100–240 VAC, 50–60 Hz or 40–72 VDC;
Consumption: 9 watts maximum

Connectors — WAN or Internet: (2) 120-ohm RJ-48,
(2) 75-ohm BNC; (2) IEC mains power;

(2) DC screw block terminal
Data: (1) RJ-45;
Management: (1) RJ-45
Indicators — Power/test, in-band, network status, network loopback, loopback acknowledge; illuminated screen display for configuration and diagnostic information

Size — 4.13H (1U) x 22.3W x 33D cm
Weight — 2.27 kg

Ordering Information

| ITEM | CODE |
|----------------------|---------|
| Dual Trunk E1 Router | LRU4240 |