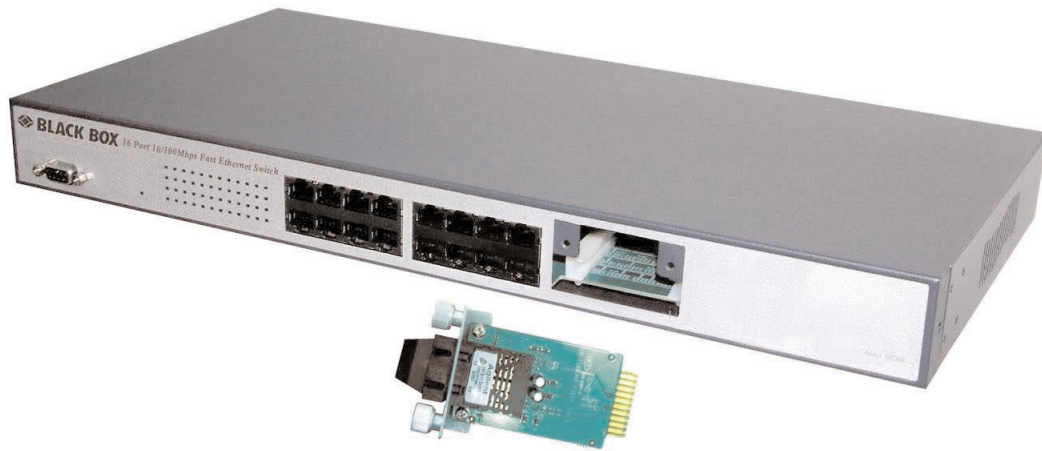




BLACK BOX[®]

NETWORK SERVICES

Smart Ethernet Switches



Key Features

- ▶ Smart Management through serial port.
- ▶ Optional Fibre Optic Module.
- ▶ Port Trunking up to 800Mbps Link.
- ▶ Port Based VLAN Support for up to 4 Groups
- ▶ Supports auto-detected full/half duplex modes and broadcast storm protection.
- ▶ 19" Rackmount kit included.

The Switches LBS216AE-R3 and LBS224AE-R4 provide (16) or (24) 10/100 copper ports and one free 100-Mbps slot for a Fibre Optic module. The LBS218AE features (8) 10/100 Copper ports and no additional fibre port. This switch family was designed for easy installation and high performance in an environment where traffic on the network and the number of users increase continuously.

The compact rackmount size was specifically designed for ROBO (Remote Office & Branch Office) and medium to large workgroups and can be installed where space is limited. Moreover, it provides smooth network migration and easy upgrades to network capacity.

"Smart" features include setting up of VLANs; combining different ports together to create trunk lines; etc.

What's included:

- (1) Switch
- (1) Power Cord, 1.8-m
- (1) 19 inch Rackmount Kit
- (1) Console Port cable, DB-9 male-female, 1.8-m
- (1) Printed Manual

Specifications

Standards Compliance —
IEEE 802.3 10BASE -T; IEEE 802.3u
100BASE-TX

Number Of Ports —
8/16/24 ports: 10/100Mbps Nway port
Supports Auto MDIX Crossover
Capabilities
Supports link Fault Tolerance on
Trunking Port

Expansion Interface —
1 uplink port for fibre module (except
LBS218AE)

Fully Flow Control Supported —
Half-duplex mode: Backpressure, Full-
duplex mode: IEEE 802.3x

Network Transmission Media —
10BASE-T Cat. 3, 4, 5 UTP/STP,
100BASE-TX Cat. 5 UTP/STP

Network Status Monitoring LEDs —
per port: LINK/ACT, 10/100M, FDX,
System: POWER

Buffer Memory —
RAM: 4Mbits per device, RAM buffer
dynamically allocated for each port

Filter/Forward Rate —
Packet Filtering/ Forwarding Rates,
100Mbps - 148,800pps, 10Mbps -
14,880pps

MAC Address —
up to 2K per device

Power Supply —
90-260V/AC, 50-60Hz

Power Consumption —
16 Watts (Max)

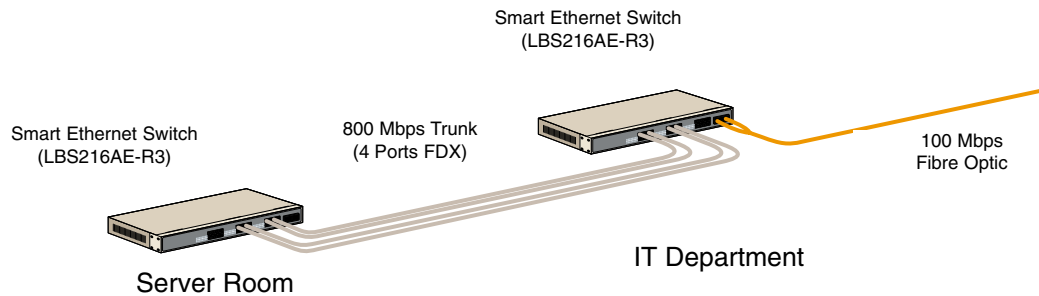
Temperature —
Operating: 0°C ~ 60°C; Storage: -20°C
~ +90°C

Humidity —
10% ~90% RH (Non-condensing)

Dimension —
4.4 H x 44.0 W x 22.0 D cm

Weight —
2.9Kg

Safety & EMI Certificates —
CE & FCC-A



Ordering information

ITEM	CODE
<i>Ethernet Switch 10/100Mbps</i>	
8-Port	LBS218AE
16-Port	LBS216AE-R3
24-Port	LBS224AE-R4
<i>Fibre Optic Modules for LBS216AE-R3 and LBS224AE-R4</i>	
100B-FX, MM, ST	LBS200C-ST
100B-FX, MM, SC	LBS200C-SC

Black Box Network Services - The world's largest network services company

We are, with 25 years of experience, the world leader in network infrastructure services.

On the Phone — no charge, answer calls in less than 20 seconds, find the right product with our technical experts.

On-site — superior design and engineering, Certified installations, end-to-end service.

On-line — receive technical knowledge on-line, including technology overviews, Black Box Explains and the Knowledge Box.

Most comprehensive TECHNICAL SUPPORT — our best Product! Free hotline TECH SUPPORT!

The world's best customer service — Custom design services and products, the best warranties, money-saving discount programs.

BLACK BOX exclusives — Certification Plus. Guaranteed-for-life products and services.