

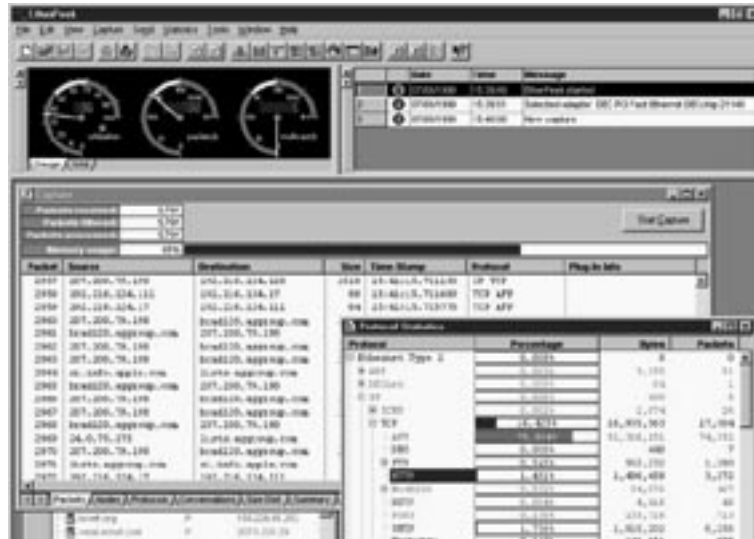
BLACK BOX®

NETWORK SERVICES

EtherPeek

Key Features

- ▶ Powerful
- ▶ Affordable
- ▶ Easy-To-Use
- ▶ Detect device failures and faulty software
- ▶ Identify routing and addressing problems
- ▶ Keep track of internet usage



Tackle Tough Network Problems

WildPacket's award-winning EtherPeek is an intuitive, powerful protocol analyzer and packet debugger for Ethernet networks. Available for Windows95/98/NT4.0/2000 and Macintosh computers, EtherPeek simplifies the complex task of troubleshooting mixed-platform, multiprotocol networks. EtherPeek sets the industry standard for ease-of-use while offering all of the expert debugging capabilities expected of a full-featured analyzer.

Well-known for its friendly graphical interface, EtherPeek provides a wide variety of detailed information on network utilization, node conversations and packet contents. Use EtherPeek to localize network problems, perform sophisticated diagnostic tests, monitor network traffic and events, trace illicit network activities, as well as test and debug network hardware and software.

Quickly Isolate & Diagnose Network Trouble

Similar to a phone tap, EtherPeek captures all data packets exchanged between nodes on the Ethernet wire — regardless of the types of hardware and

software installed on your network. EtherPeek interprets the protocol layers of a captured frame and exposes the core information. By monitoring, filtering, decoding and displaying packet data, EtherPeek easily pinpoints protocol errors and detects network problems such as unauthorized nodes, misconfigured routers and unreachable devices.

Filter for Specific Traffic Easily

EtherPeek's powerful packet filtering mechanism helps locate and remedy network problems quickly and easily. Use these flexible, powerful filters during or after capture to isolate traffic by specific node, pro-ocol, error type and/or packet content. EtherPeek's simple "Make Filter" command allows you to immediately create and filter for specific network traffic by highlighting a packet line. Advanced filtering capabilities add OR, AND, and NOT support in filter creation and implementation.

In addition, EtherPeek includes ProtoSpecs™ technology, which uses multiple identifiers within a packet to create a tree-structure that specifies a top-level or "parent" protocol (such as

"IP") and subprotocols that it contains (such as "FTP" or "SNMP").

Monitor Network Performance in Real-Time or in Retrospect

You can't afford network slowdowns and bottlenecks. EtherPeek's real-time network statistics depict traffic in terms of overall utilization, nodes, conversations and protocols. History statistics provide performance data through traffic captured for a specified time interval. Easily identify "talkative" nodes or "chatty" protocols generating unnecessary traffic. Discover which protocols consume the most bandwidth and which nodes communicate most frequently. Or check to see how a router is handling traffic during peak hours.

Be Notified of Network Events

Take proactive measures by setting alarms to warn of significant network events and indications of trouble before it escalates. Set a threshold alarm on any node, protocol or network statistic. In addition to visual, audio, and pager notification options, EtherPeek can speak a message or execute an

Applescript (Mac version) or a batch process (Windows version), such as "send an email," when-ever a network event occurs.

Debug Network Hardware & Software

Use EtherPeek to monitor and debug hardware and software transactions to:

- Check for protocol compliance
- Generate traffic to test varying loads
- Send packets to test device reactions
- Customize or alter packets for testing
- Develop custom packet decoders & filters for use with uncommon or proprietary protocols

Analyze Network Trends

EtherPeek's graphing and trending features allow you to collect, display, save and analyze virtually any node, protocol, network or summary statistic available over a userspecified period of time.

View trends through a variety of graph options from within the program. Output data in enhanced XML format for web access, or save statistics in tab-delimited form that can be exported to an external charting application.

Powerful, Distributed Packet Capture

EtherPeek (combined with the freely distributed remote packet capture application, EtherHelp), is an enterprisewide fault and network performance management solution that distributes full "Peek" capabilities: network monitoring, packet filtering, triggering and analysis, to key segments (LAN, WAN and Gigabit Ethernet) throughout the network. The combination of distributed monitoring and remote analysis makes this powerful tool perfect for multivendor, multi-protocol networks.

EtherHelp:

- Helps people who design, build, manage and support multi-protocol, multi topology networks perform remote analysis on a LAN/WAN segment.
- Captures all network traffic, (or a specified portion of that traffic), then saves that traffic in a packet file.

Enhanced Report Generation

Output statistics to your web pages to access data concerning your network's health anywhere, anytime. Automatically generate statistics reports in XML format through templates provided with the software.

Choose Your Format

EtherPeek can save in text, Peek, or Sniffer(.enc) format so that you can share packet traces between legacy systems and our software. Further extend EtherPeek's scope and the interplay with legacy analyzers by using ProConvert to convert packet traces between almost any hardware or software-based analyzer and EtherPeek.

Product Maintenance

All WildPackets products include free telephone, fax and e-mail support for the life of the product, as well as a 90-day from date of purchase maintenance period during which all product updates and upgrades are free. One and two year extended maintenance, providing priority

response technical support, on-line or automatic shipment of product upgrades and updated documentation, monthly technical mailings, free utility software and more, is available.

The EtherPeek Family of Products

EtherPeek Core Product: Features

- Multiple Capture Windows
- Thousands of protocol & sub-protocol decoders
- Powerful, real-time & post-capture event trigger & filtering
- Grouped name table
- ProtoSpecs™ protocol layer hierarchical break outs with definitions
- Simple and advanced filtering
- Extensive notification capabilities including visual, audio, pager, speech and email
- Modular plug-in architecture
- User-definable filters, decodes & plug-ins
- Generate traffic — Send/alter packet function

- Real-time HTML and enhanced XML traffic statistics report generation
- Summary statistics
- History statistics

EtherPeek Core Product: Benefits

- Capture and view conversations, node and protocol activity in separate buffers simultaneously.
- Interpret data for packets from ALL major protocol suites.
- Locate & remedy network problems quickly by limiting packet captures to data of interest.
- Work with familiar, identifiable names for easy packet & device analysis.
- Facilitate protocol filtering, monitoring & analysis.
- Filter packets during or after capture. OR,AND, and NOT support in filter creation and implementation.

- Take proactive measures — Identify precursors to major problems.
- Expand on EtherPeek's built-in functionality.
- Create custom filters & decodes for use with proprietary protocols; analyze packet contents during or after capture.
- Test varying loads & device reactions to specific packet types.
- Monitor live network traffic from any location with your Web browser.
- Baseline key network data at requested intervals for a comparative look at network performance.
- See performance statistics for your network, including: utilization, packets/second or bytes/second for a specified time interval.

EtherPeek Product Extensions

EtherHelp: Powerful, Distributed Packet Capture

EtherHelp extends EtherPeek's powerful packet capture and filtering capabilities to multiple LAN/WAN local and remote network segments.

Plug-Ins Provide Expert Analysis Capabilities

External plug-in modules help you: find and log duplicate IP address use, verify checksums, log Web usage and FTP downloads. EtherPeek includes a

Plug-in SDK, so anyone with programming experience can extend the capabilities of the program by writing their own custom add-in enhancements.

WebStats: Intelligent website management tool

This flexible, highly configurable anal separate from the program and extensible. A Decoder SDK is included with EtherPeek for any user with programming experience to customize or add their own decoders.

NetSense ProAnalyst

NetSense performs expert analysis of peer-to-peer conversations on packets captured from EtherPeek or TokenPeek, or from packet traces that have been converted from "Peek" format with ProConvert. NetSense extracts critical information from each packet and displays it in several different formats, empowering you to view trace files in a highly graphical and interactive fashion.

iNetTools: A HandyTest Tool Suite

Add iNetTools for Internet and IP-based

networks to EtherPeek's Tool menu (WIN version ONLY) during EtherPeek's installation process to get ready access to a variety of testing tools, including Ping, Trace Route, DNS Lookup and more!

ProConvert: Trace File Converter

ProConvert™ supports two-way LAN packet capture file inter-change between the "Peeks" and over 18 different protocol analyzers and packet capture formats.

Specifications

System Requirements

EtherPeek 4.x for Windows —

10 Mbit Ethernet Requirements:
Pentium 166 MHz or higher
Windows 95/98/ NT 4.0/2000 (SP3 or later)
64 MB RAM
NDIS 3 Compatible NIC
DEC 21X4X Compatible NIC for Error Packet Capture
Color Monitor Required

100 Mbit Ethernet:
Pentium II 400 Mhz
128 MB RAM

EtherPeek for Macintosh OS —

PCI-based Power Macintosh
32Mb Free RAM
System 8.0 or higher
EtherPeek Supported Ethernet Interface

About WildPackets —

WildPackets develops and markets high-performance tools that deliver real-time, strategic information about an organization's network and Internet presence. Our awardwinning products include:

- AiroPeek Wireless protocol analyzer
- EtherPeek Ethernet analyzer
- EtherHelp FREE, distributed remote capture application

Black Box Network Services - The world's largest network services company

We are, with 25 years of experience, the world leader in network infrastructure services.

On the Phone — no charge, answer calls in less than 20 seconds, find the

right product with our technical experts.

On-site — superior design and engineering, Certified installations end-to-end service.

On-line — receive technical knowledge on-line, including technology overviews, BLACK BOX Explains and the Knowledge Box.

Most comprehensive TECHNICAL SUPPORT — our best Product! Free hotline TECH SUPPORT!

The world's best customer service — Custom design services and products, the best warranties, money-saving discount programs.

Black Box exclusives — Certification Plus. Guaranteed-for-life products and services.

Ordering information

ITEM

CODE

EtherPeek	
EtherPeek (EN) for Ethernet, Version 4.1VSSEL301-R4
EtherPeek (EN) for Mac, Version 4.1VSSEL351-R4
EtherPeek (TR) for Token Ring, Version 4.1VSSEL361-R4