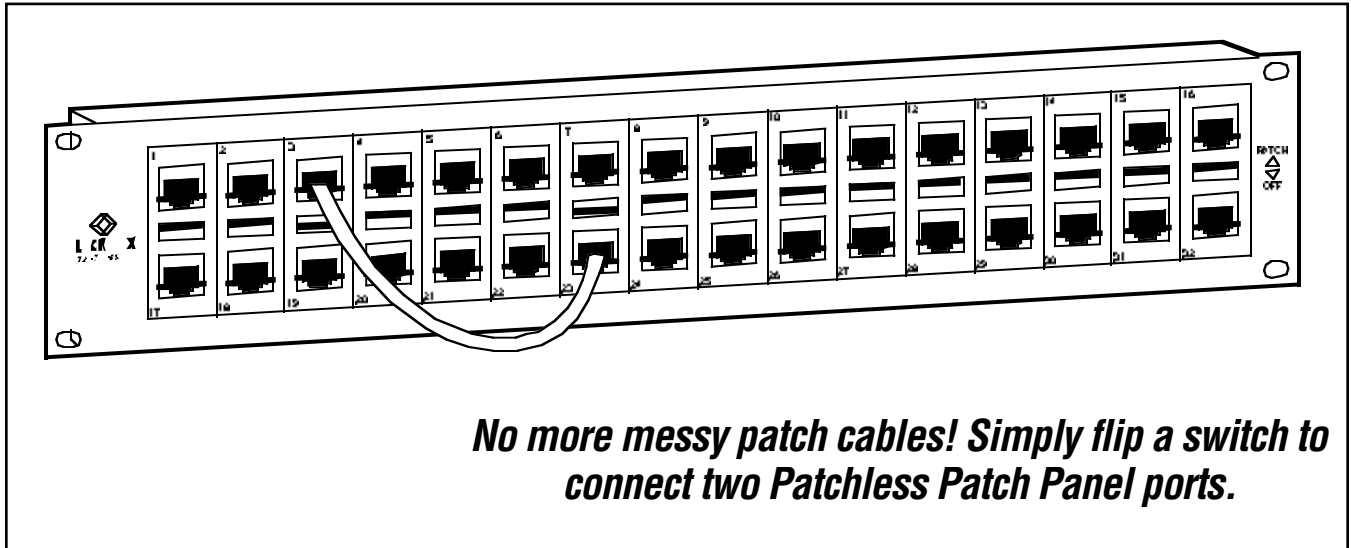




# BLACK BOX<sup>®</sup>

## NETWORK SERVICES

### CAT5 PATCHLESS PATCH PANELS



***No more messy patch cables! Simply flip a switch to connect two Patchless Patch Panel ports.***

#### Key Features

- ▶ ***Simply flip a switch instead of connecting a patch cord to connect two ports together.***
- ▶ ***Models available for UTP or STP.***
- ▶ ***Supports all applications operating on bandwidths up to 100 MHz.***
- ▶ ***Conforms to TIA-EIA 568 standards.***

The CAT5 Patchless Patch Panels are designed to support all wiring centers. The panels use Switching Patch Panels (SPPs) technology: it lets you flip a switch instead of moving patch cords.

Models are available for shielded or unshielded twisted pair (UTP or STP), with TIA/EIA-568B 110, TIA/EIA-568A 110, or TIA/EIA-568B RJ-RJ connectors.

The Panel supports all applications operating on bandwidths up to 100 MHz, including TP-PMD and ATM. The

panel also exceeds all Category 5E channel requirements for NEXT, attenuation, and return loss.

The Panel increases signal strength by eliminating connector loss. It also cuts maintenance and equipment expenses in the wiring closet, and improves reliability by eliminating patching errors.

What's more, it supports CAT5 and CAT5E requirements and saves rack space in wiring centers.

#### Specifications

**Compliance**—FCC Part 15, Subpart J, Class A (USA); EN-55022, Class B (Europe)

**Termination Type**—568B/568A

**Standards**—ANSI, TIA/EIA-568

**Bandwidth Support**—100 MHz

**Material**—Aluminum

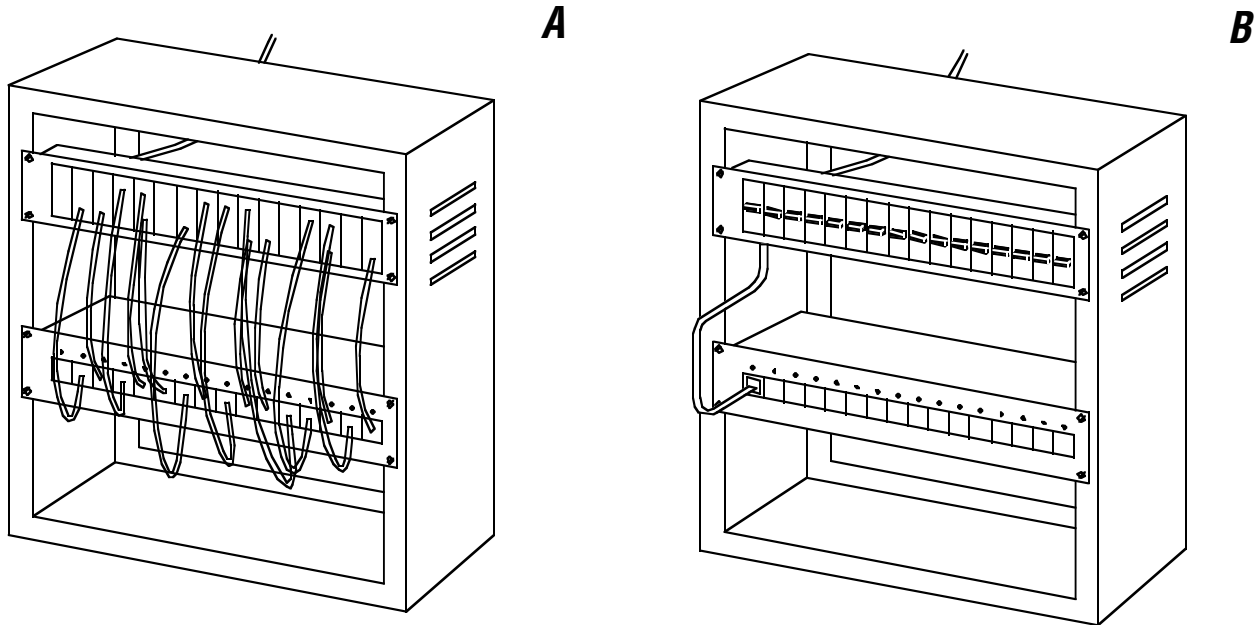
**Temperature Tolerance**—0 to 85°C

**Relative Humidity**—Up to 90%, noncondensing

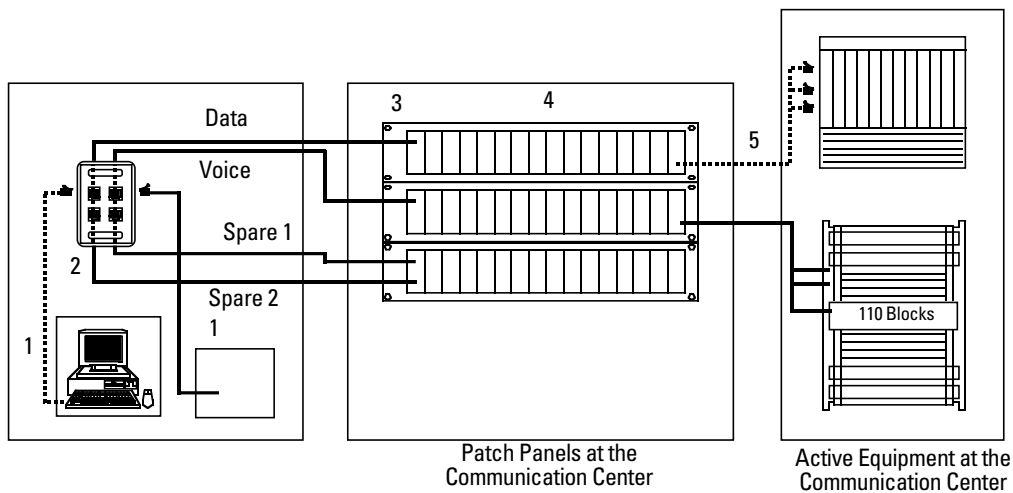
**Size**—8.9 x 48.3 x 6.6 cm

**Weight**—1.3 kg

**Instead of using messy patch cords and a wiring rack (see diagram A), choose the Patchless Patch Panel (see diagram B).**



**A typical IDF Cluster Design using Patchless Patch Panels.**



## Technically Speaking

- TIA/EIA specifies "preserving wiring twist as closely as possible to the point of mechanical termination."
- TSB-40 states "the amount of untwisting in a pair as a result of termination to connector hardware shall be no greater than 13 mm (0.5 inches) for Category 5 and shall be no greater than 24 mm (less than 1 inch) for Category 4."

## Ordering Information

ITEM	CODE
<b>CAT5 Patchless Patch Panels, 32-Port</b>	
<b>Unshielded Twisted Pair</b>	
T568-B 110 .....	JPM650A
T568-B RJ-RJ .....	JPM651A
T568-A 110 .....	JPM652A
<b>Shielded Twisted Pair</b>	
T568-B 110.....	JPS200A
T568-B RJ-RJ .....	JPS201A
T568-A 110.....	JPS202A

You may also want to order cable...

Category 5 Patch Cable, 100-MHz, 4-Pair.....EVMSL05