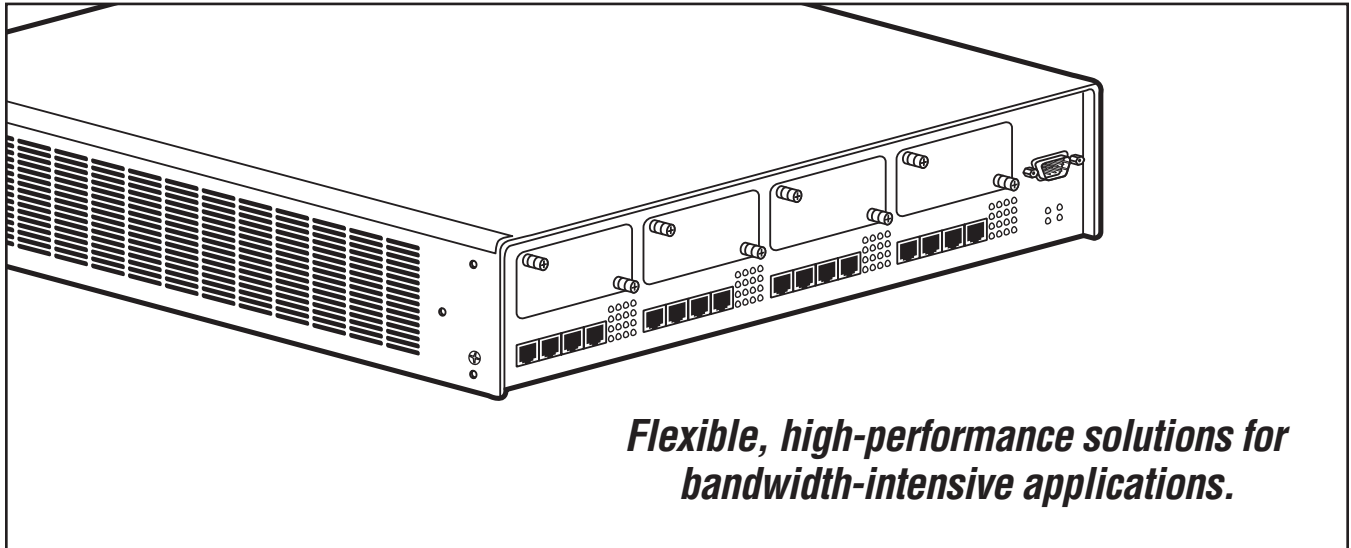


© 2000. All rights reserved.
Black Box Corporation.

BLACK BOX[®]

NETWORK SERVICES

16-PORT EXPANDABLE ENTERPRISE SUPERSWITCH



Key Features

- ▶ **Based on highly integrated ASIC technology.**
- ▶ **5-Gbps backplane.**
- ▶ **VLAN provides improved security, reduced broadcast flooding, and superior network control.**
- ▶ **Optional redundant power supply assures 100% network uptime.**
- ▶ **Spanning Tree Algorithm prevents broadcast loops for fail-safe network redundancy.**

The 16-Port Expandable SuperSwitch offers flexible, high-performance solutions for bandwidth-intensive applications.

Ethernet and Fast Ethernet connections are seamlessly integrated into one chassis that provides versatile enhancements for existing installations and customized networks.

The SuperSwitch features a base configuration of 16 fixed dual-speed autosensing 10/100BASE-TX ports and four slots for additional high-speed uplinks. Two kinds of uplink modules are available:

- (4) 10/100 Mbps UTP ports per slot, for an additional (16) TX ports.
- (2) 100BASE-FX ports per slot, for a chassis total of (8) F/O ports.

Full-Wire Transmission.

The non-blocking, distributed buffer memory can handle simultaneous transmission across the switch. In addition, adaptive cut-through or store-and forward switching contributes to near-zero latency.

You also get optimum network performance thanks to the Implicit Flow Control Mechanism which provides enhanced response time.

Configure the Fast Ethernet ports for Half or Full Duplex operations for shared 100-Mbps or dedicated 200-Mbps connectivity respectively. And both ports offer auto-negotiation and auto-sensing.

RMON support enables you to monitor each port with the front panel LEDs. That's real-time network management.

You can manage the SuperSwitch with any SNMP-based management platform. In addition, a local terminal enables out-of-band administration using the switch's extensive CLI management.

Applications:

- Create a collapsed Fast Ethernet backbone.
- Interlink Ethernet and Fast Ethernet networks.
- Connect to Fast Ethernet servers in Full/Half Duplex mode.

Specifications

Filter/Forward — 5-Gbps aggregate
Operation — Half- or full-duplex

Connectors — (16) RJ-45
 autosensing 10-/100-Mbps
 Ethernet

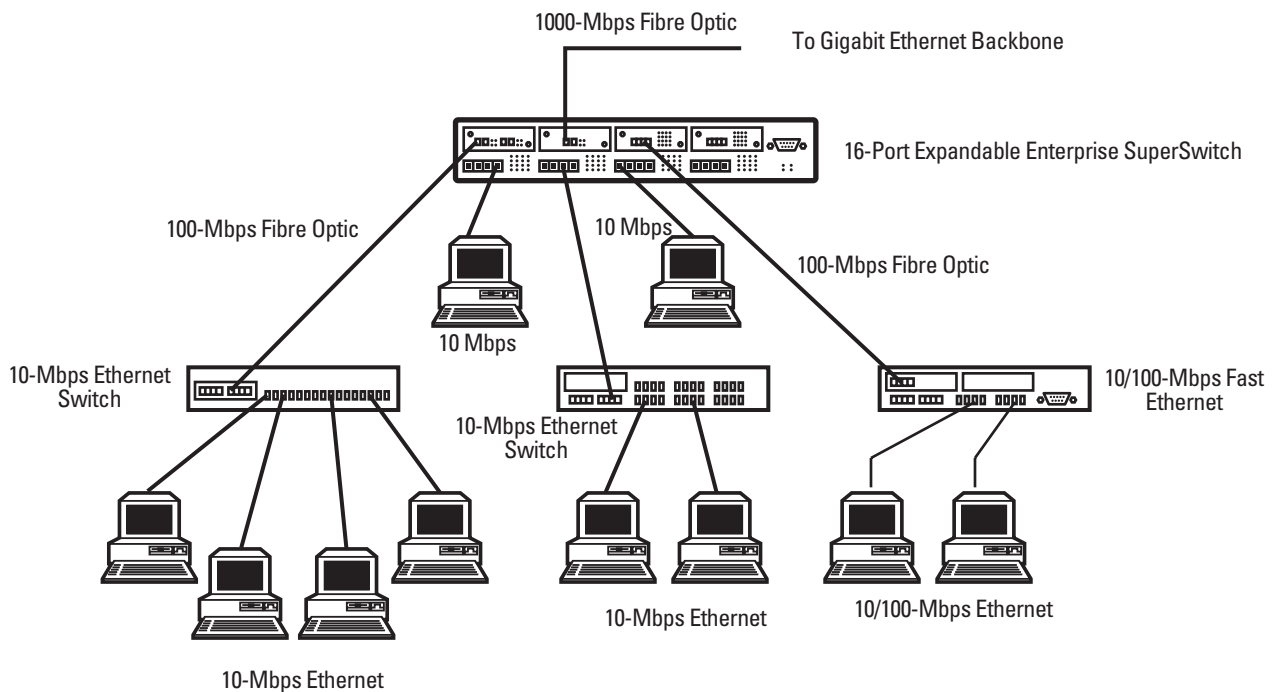
Power — 100–240 VAC,
 50–60 Hz, autosensing

Size — 8.9H x 48.3W x 48.3D cm
 (3.5"H x 19"W x 19"D)

Weight — 7.5 kg

See more specifications below.

		Additional Specifications						
Compatibility	IEEE 802.3, IEEE 802.3u (Fast Ethernet)							
Connectors	10/100 Ports (UTP); RJ-45, Serial Port (RS-232), DB9, Fibre, DSC							
Fiberoptic Ports		FO/M	FO/S1	FO/S2	FO/SX	FO/SY	FO/SZ	
	Estimated distance range (km)*	0–2	0–18	17–40	40–60	45–85	85–110	
	* subject to optical link budget							
	Fiber	MM	SM	SM	SM	SM	SM	
	Wavelength (μ)	1.3	1.3	1.3	1.3	1.3	1.55	
Attenuation (dB/km)	3	0.4	0.4	0.4	0.4	0.2		
Optical link budget range (dB)	11–16	11–16	20–23	27–33	35–38	33–37		
Diagnostic LEDs	Ports					Global		
	C/F	Green/Yellow/Off	Full Duplex/Collision in Half-Duplex/ Normal Half-Duplex activity			PWR	Green ON	Power up
	Link	Green/Yellow/Off	100 Mbps/10 Mbps/No link			Fault	Green ON	Fault condition
	RX	Green ON/OFF	RX activity/No RX activity			Act	Green ON	Switch functioning
	TX	Green ON/OFF	TX activity/No TX activity			SNMP	Green ON	SNMP activity



Ordering Information

ITEM

CODE

16-Port Expandable Enterprise Super Switch.....	40466
Modules	
4-Port 10BASE-T/100BASE-TX.....	40467
2-Port 100BASE-FX Multimode	40469